

Style book index

12	Placket width	P19	
13	Cuff height	P19	
14	Collar	P20	
15	Mono position	P21	--- P24
16	Collar/cuff pic stitch	P25	
17	Buttonhole style.	P25	

Style book index

1	Pattern	P1	---	P3
2	Back style	P4	---	P5
3	Placket style	P6	---	P7
4	Front style	P8	---	P12
5	Cuff style	P13	---	P14
6	Short cuff style	P15	---	P16
7	Cuff pleat style	P17		
8	Collar band style	P17		
9	Collar stay style	P17		
10	Pocket style	P18		
11	Contrast position	P18	---	P19

Style book introduction

The option mark  means default option.

All slant cutting styles in this book, if the fabric is solid, will cut in normal way.

If customer don't choose any style, we will make the shirt accordingly to all default options.

Women shirt style book

Pattern



91M1

AS-31 pattern
V shape collar
front dart to bottom



91M2

AS-33 pattern
closed collar
front dart to bottom

Pattern

1



91M3

D-AS1-36 pattern
V shape collar
chest dart, front dart to bottom



△ 91A1

AS-32 pattern
closed collar
chest dart, front dart to bottom

Pattern



92A9

7H pattern,
closed collar, no front dart



91M6

AS-35 pattern,
closed collar, front french dart

Pattern

2



91M4

D-SS-4 pattern, closed collar, front panel
contrast fabric, left & right placket, side panel
joint with front panel



91M5

AS-47 pattern, V shape collar, front panel
joint fabric, side panel joint with front panel
with 0.3cm top stitch

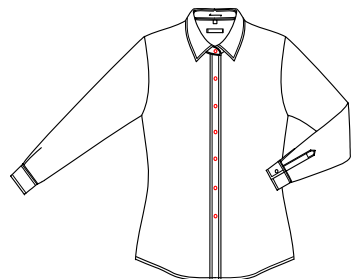
Pattern

2-1



93Q8

H-1 style, closed collar,
chest dart without waist dart



93R8

H-2 style, plain front
without dart



99Q5

AS-32 pattern, closed
collar, with chest darts,
front waist dart don't
come to bottom



93W6

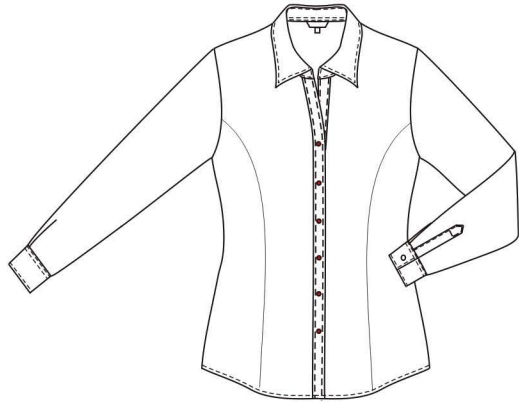
H-2 style, V shape collar
plain front without dart



9836

AS-35 pattern, closed
collar, with chest darts,
front with princess seam

Pattern



92J4

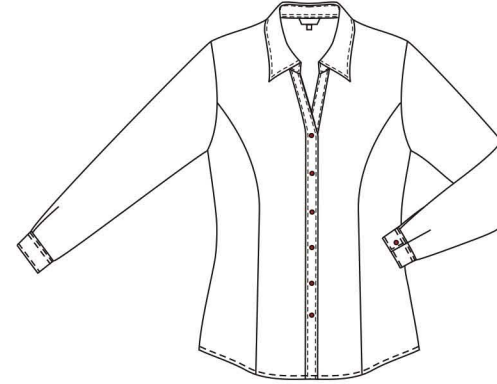
AS-38 pattern, small V collar
front French dart



9340

AS-33 pattern, closed collar
front 4 darts to bottom

Pattern



92A8

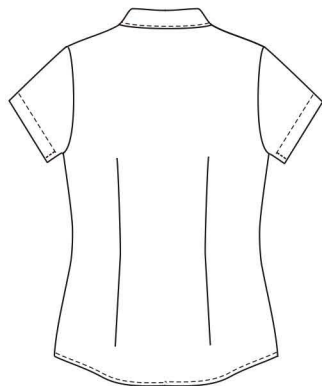
AS-34 pattern, V collar
front French dart



91N6

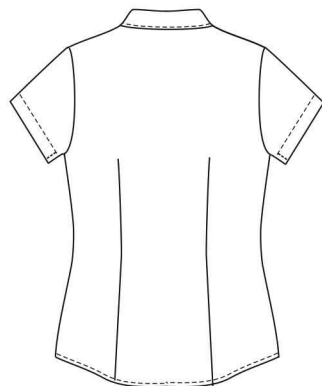
D-AS1-37 pattern, small V collar
chest dart, front dart to bottom

Back style



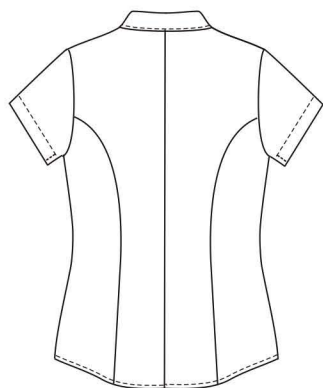
△ 9665

Double darts



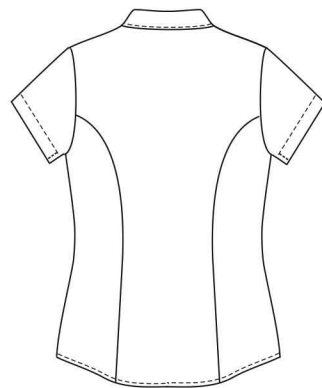
91J4

Double darts to bottom



91H9

French seam with
center back seam

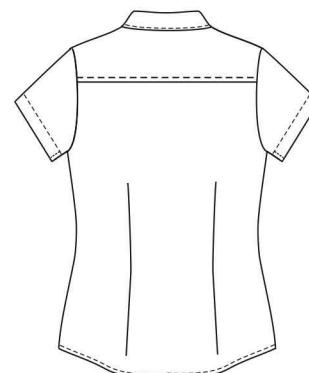


91J1

French seam
No center back seam

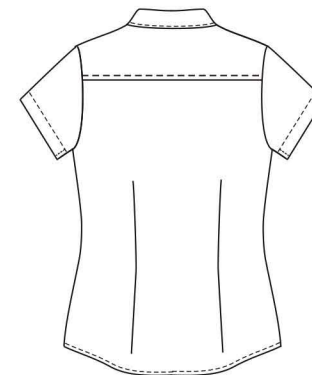
Back style

4



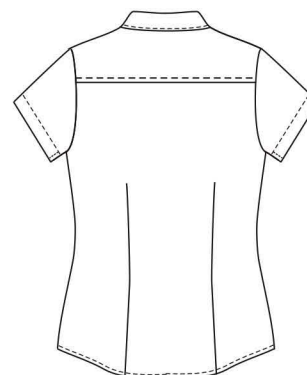
92B1

Only for 7H pattern, Yoke in
the back with 0.6cm top stitch,
double darts



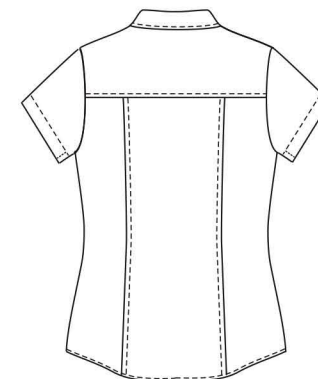
91N8

Yoke in the back
double darts



9451

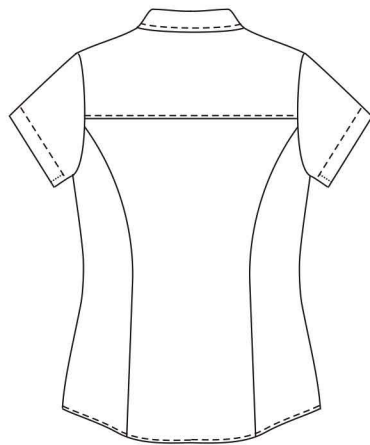
Yoke in the back double
darts to bottom



91N1

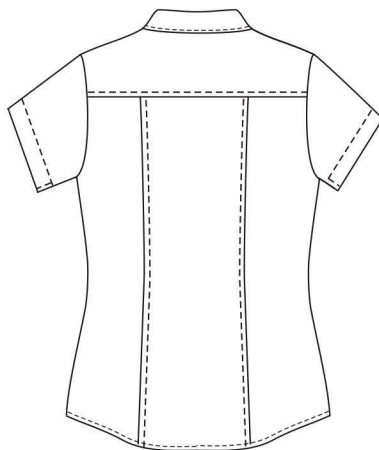
Only for D-SS-4 pattern and
AS-47 pattern, Yoke in the
back, back panel joint style

Back style



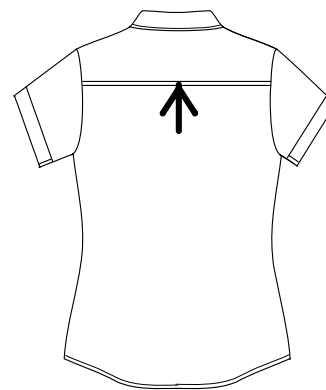
9452

Yoke in the back
French seam, no center back seam



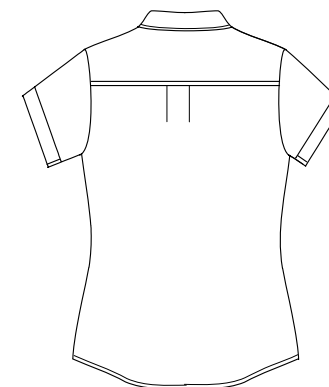
9445

Only for 7H pattern, Yoke in the back
Back panel joint style with 0.3cm top stitch



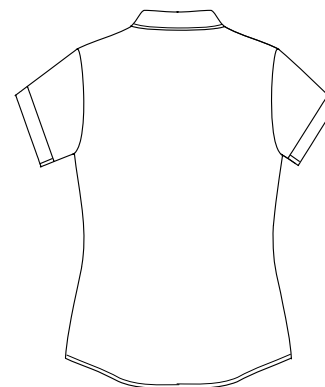
93R9

Back part have yoke,
Center Box Pleat from
top not to bottom
(Only for H-2 Style)



93Y8

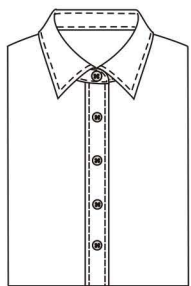
Back part have yoke,
Box Pleat from top
not to bottom(Only
for H-2 Style)



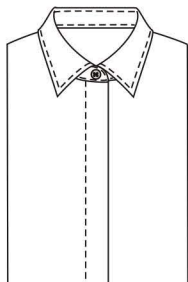
93Q9

Back part no yoke, Back
part without dart(Only
for H-1 style)

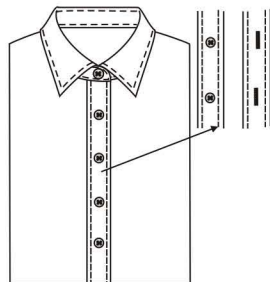
Placket style



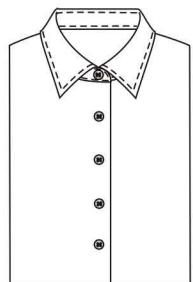
Δ9801 Placket



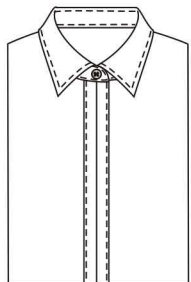
9802 Hidden placket



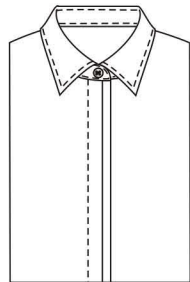
9803 Left&right placket



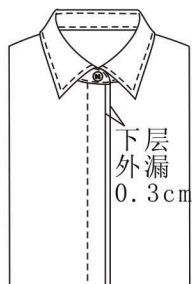
9800 Plain plack



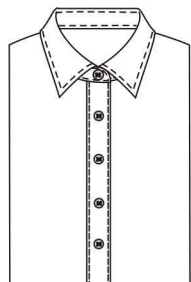
91N7
Pleated hidden placket



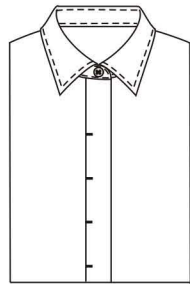
9A26
1/3 hidden placket



95E5
Exposed hidden placket



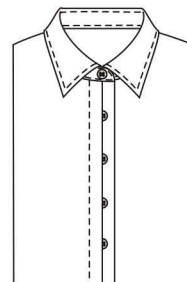
91N5
Left&right binding



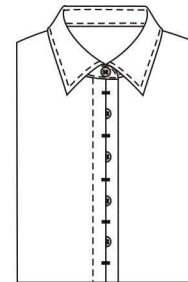
91H4
Exposed hidden placket with bartack

Placket style

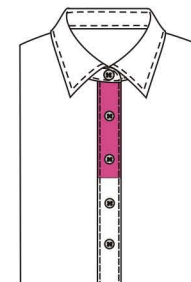
6



9716
1/2 hidden placket

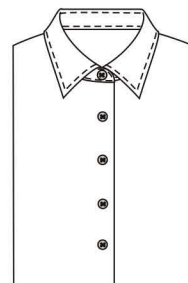


9337
1/2 hidden placket bartack in the middle of each two buttons, bartack is 0.6cm

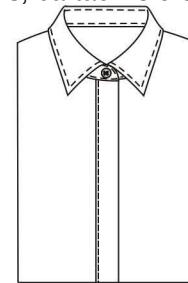


92L3

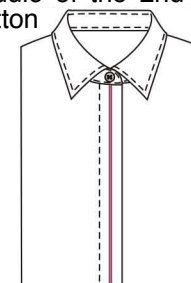
Left&right placket contrast fabric from top to the middle of the 2nd and 3rd button



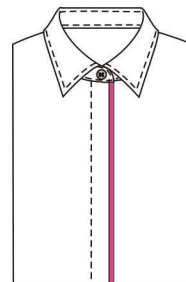
99R4
Left&right plain placket



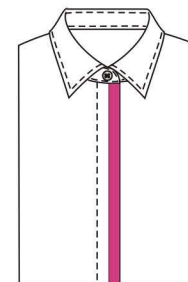
92M7
Binding hidden placket



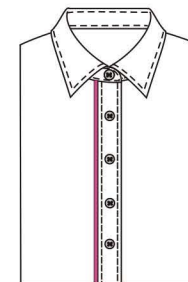
95E4
Hidden placket, add a 0.6cm wide piping in the middle



9713
Hidden placket, the upper side contrast 0.4cm piping

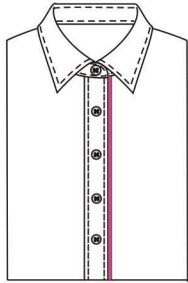


9606
Hidden placket, 1/2 wide contrast fabric



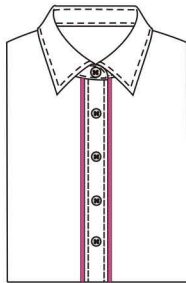
9438
0.3cm wide piping inside right placket

Placket style



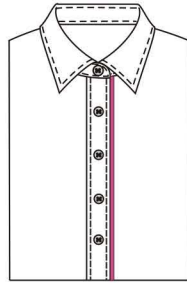
9439

The left placket with 0.3cm piping



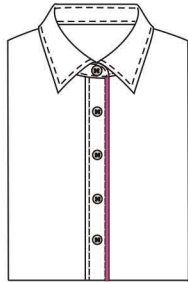
9794

The left & right placket with 0.3cm piping



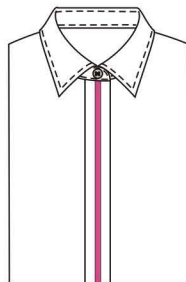
9333

The right placket with 0.3cm piping



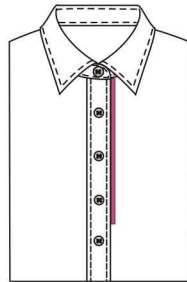
97E1

The left & right edge with 1cm contrast piping-



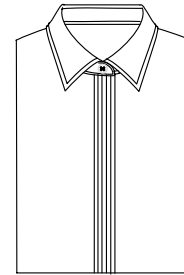
99P4

Exposed hidden placket with decoration piping in the middle



9881

Left placket inside add piping, from top to the middle of 3rd and 4th button-



93Y6

Fly front for tuxedo, 5 pleats (pleat size 0.5, distance 0.6, pleat forward to inner seam)

Front style



9203

Gusset on right chest,
two pleats, 1cm size, 1cm distance



9204

Gusset on left&right chest,
two pleats, 1cm size, 1cm distance

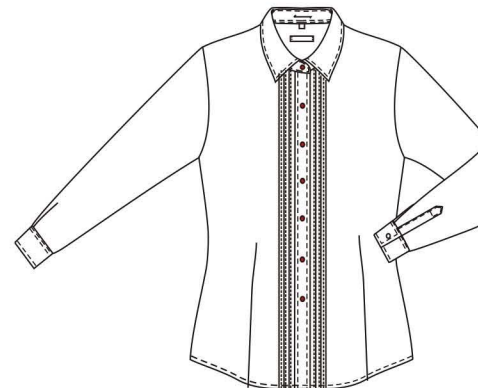
Front style

8



91F9

Lace on left&right panel,
lace is 2.3cm wide



91F8

3 pleats on left&right panel,
0.5cm size, 1cm distance

Front style



9243

Front wave fold (1cm pleat, distance between two pleats is 0.5cm)



92E7

Right placket with lace, lace is 0.8cm wide

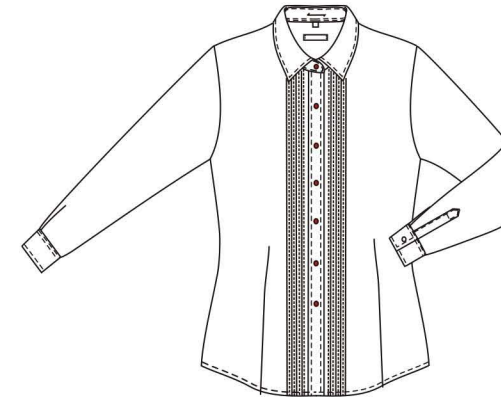
Front style

9



9336

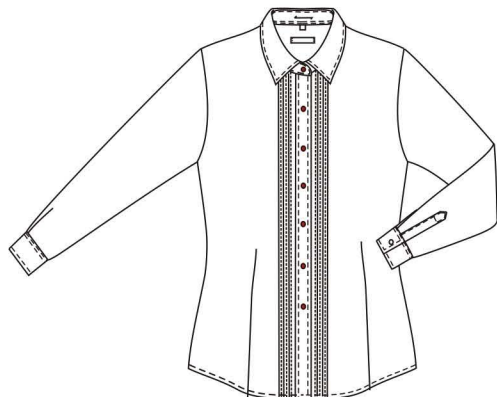
Front shoulder with patch gusset



9335

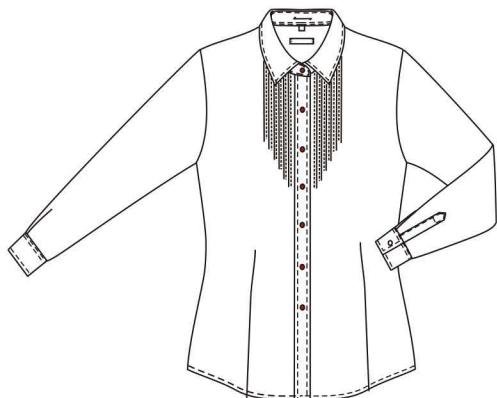
Left&right front with 4 pleats
(0.3cm pleat, distance between two pleats is 0.5cm)

Front style



9345

Three pleats on left&right panel
1st pleat is 1cm from placket
0.3cm pleat, distance between is 0.5cm



9334

Six pleats on left&right panel 0.2cm
pleat, distance between is 1.5cm

Front style

10



9339

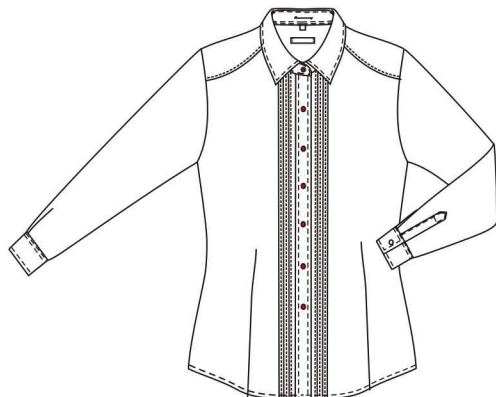
Left &right panel with four decoration stripes
stripe is 2cm wide, the longest is 23cm, the other three
is 21cm, 19cm, 17cm



9297

Left&right panel with lace
The front style can only be binding style

Front style



9367

Front shoulder with patch gusset
Three pleats on left&right panel
1st pleat is 1cm from placket
0.3cm pleat, distance between is 0.5cm

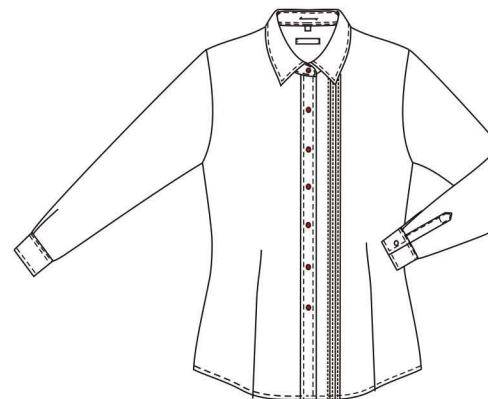


91G1

Front pleat 1cm wide
2.0cm distance
2.5cm lace on left&right panel

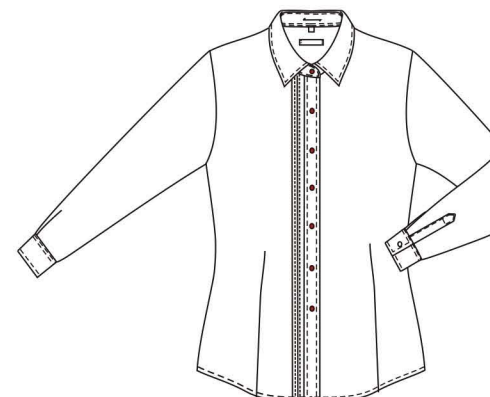
Front style

11



95E2

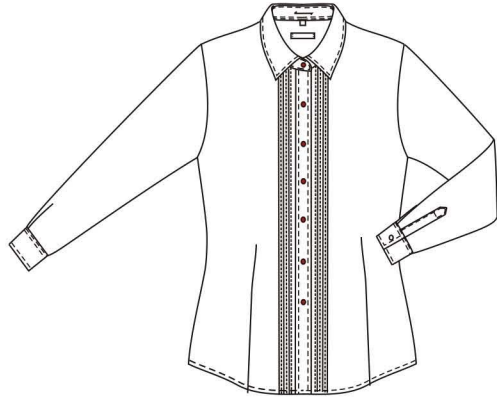
Three pleats on left panel
1cm pleat, distance between is 2cm
1st pleat is 4.5cm far from the placket



92J7

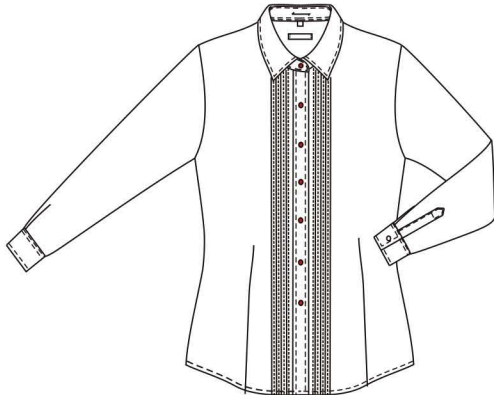
Two pleats on the right panel
0.7cm pleat, distance is 0.8cm
1st pleat is 1.4cm from placket

Front style



9345

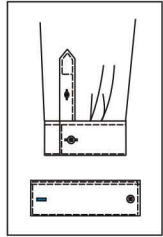
Three pleats on left&right panel
1st pleat is 1cm away from placket



91F5

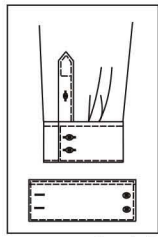
Five pleats on left&right panel

Cuff style



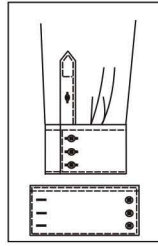
△9510

Square cuff
one button one
buttonhole



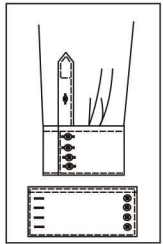
9511

Square cuff
two buttons two
buttonholes



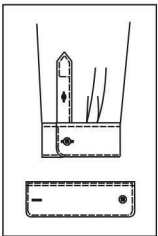
9512

Square cuff
three buttons
three buttonholes



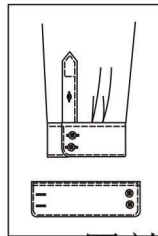
92A4

Square cuff
four buttons
four buttonholes



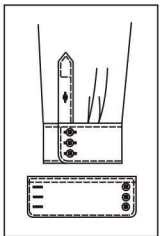
9513

Round cuff
one button one
buttonhole



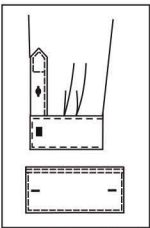
9514

Round cuff
two buttons two
buttonholes



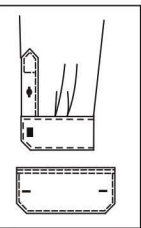
9515

Round cuff
three buttons
three buttonholes



9893

French single straight
cuff two buttonholes

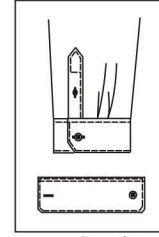


95E0

French single
hexagon cuff two
buttonholes

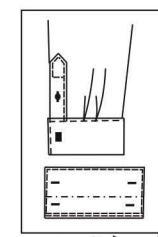
Cuff style

13



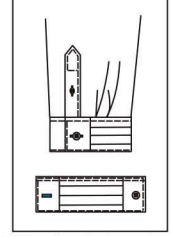
9516

Hexagon cuff
one button
one buttonhole



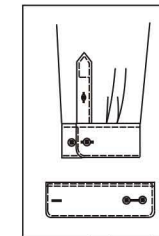
9521

French cuff
four buttons
four buttonholes



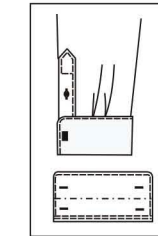
9312

Straight cuff with one buttonhole, 3 pleats in the middle on a contrast fabric



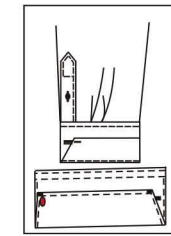
91P0

Round cuff
two buttons
two buttonholes



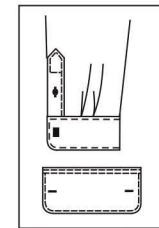
9519

French round cuff
four buttonholes



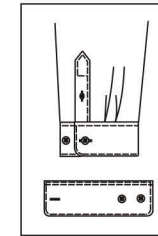
91L1

Half French straight cuff
one button one buttonhole



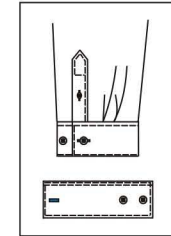
99A6

French single round
cuff two buttonholes



9777

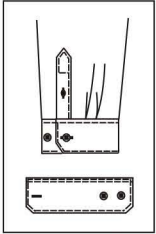
Round cuff two buttons
one buttonhole



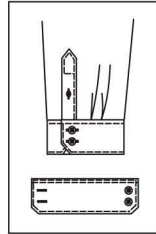
9886

Straight cuff
two buttons one buttonhole

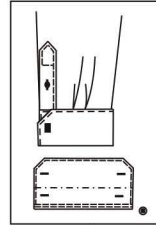
Cuff style



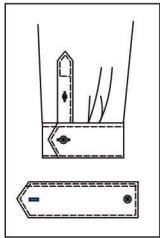
92K4
Hexagon cuff
two buttons one buttonhole



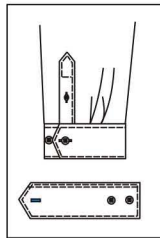
9446
Hexagon cuff
two buttons
two buttonholes



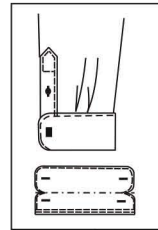
9520
French hexagon cuff
four buttonholes



9774
Pointed cuff
one button
one buttonhole

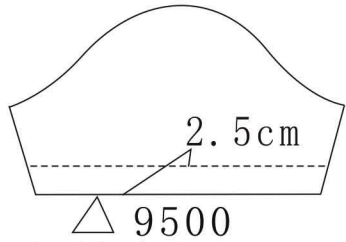


94M9
Pointed cuff
two buttons
one buttonhole

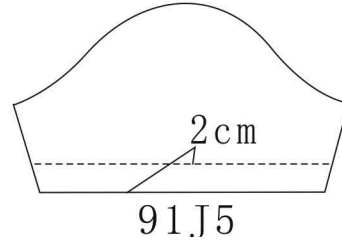


97E3
French round cuff
four buttonholes

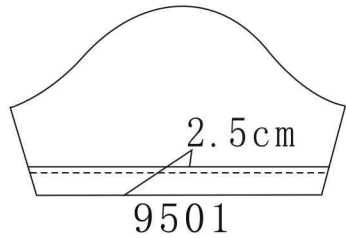
Short cuff style



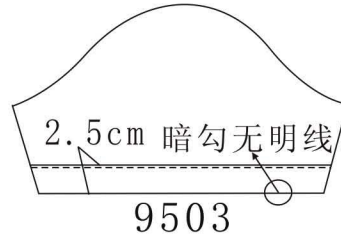
Short sleeve plain 2.5cm



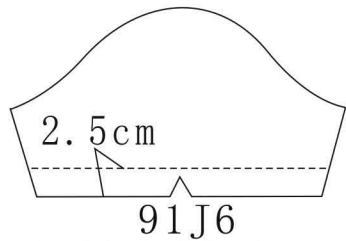
Short sleeve plain 2.0cm



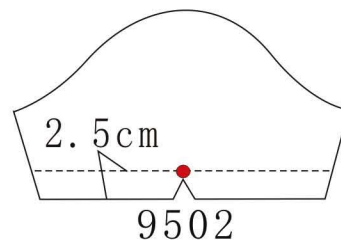
Short sleeve imitation hem



Short sleeve with cuff

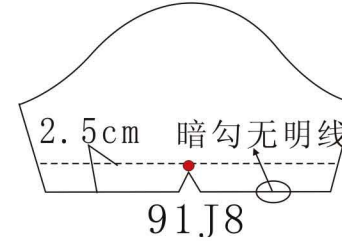


Plain short sleeve triangle opening without button

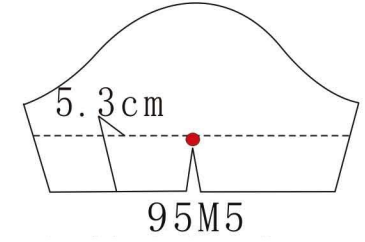


Plain short sleeve triangle opening with one button

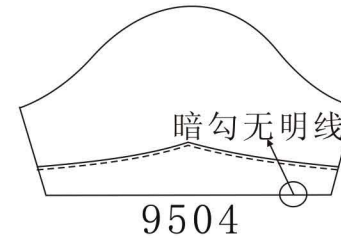
Short cuff style



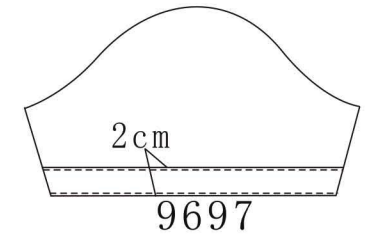
Short sleeve with inner cuff triangle opening with one button



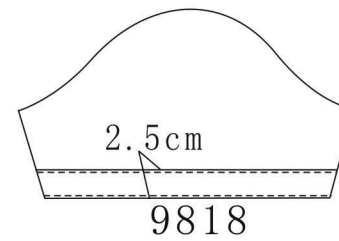
Plain short sleeve, triangle opening with one button



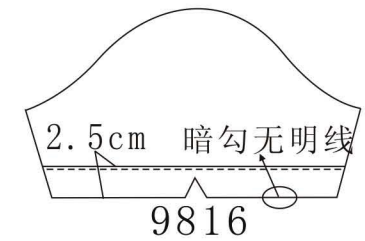
Short sleeve with horse-hoof shaped cuff



Short sleeve with 2.0cm exterior hem 0.1cm top stitch

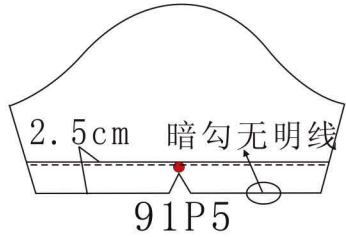


Short sleeve with 2.5cm exterior hem 0.1cm top stitch

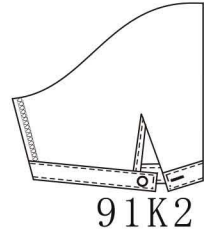


Short sleeve with 2.5cm exterior hem triangle opening without button

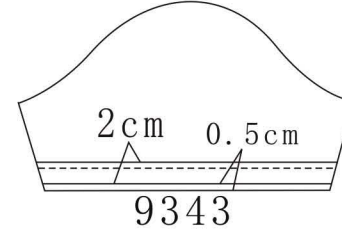
Short cuff style



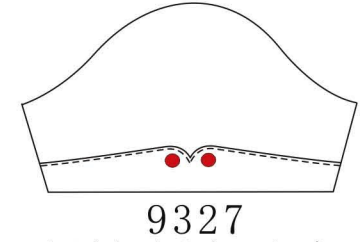
Short sleeve with 2.5cm exterior hem triangle opening with one button



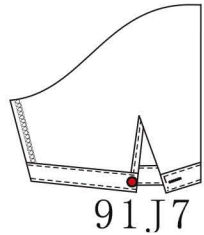
Short sleeve with 2.0cm cuff one button one buttonhole back vent 2.0cm



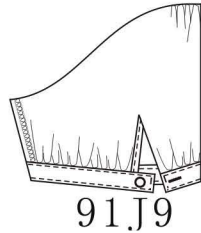
Short sleeve imitation hem with contrast piping—



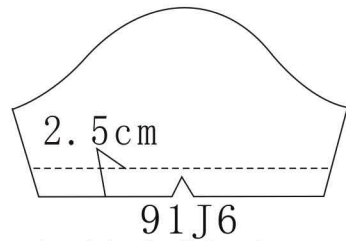
Short sleeve with 2 round houseshoe cuff with 2 buttons



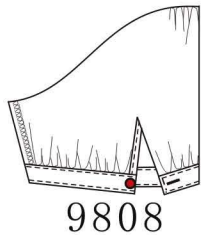
Short sleeve with 2.0cm cuff one button one buttonhole back vent 2.0cm, no small extender



Short bubble sleeve with 2.0cm cuff one button one buttonhole back vent 2.0cm

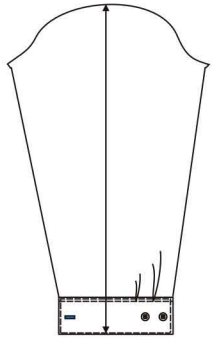


Short sleeve with plain hem 2.5cm triangle opening, no button

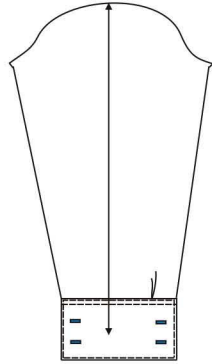


Short bubble sleeve with 2.0cm cuff one button one buttonhole back vent 2.0cm, no extender

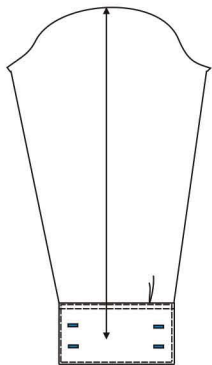
Cuff pleat style



△ 91J3
Double pleats

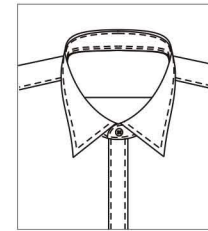


91J2
Single pleat

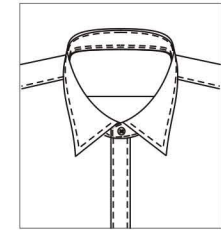


92B8
No pleat

Collar band style for closed collar

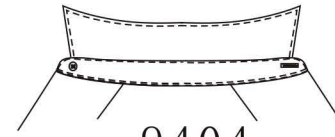


△ 9400
Round collar band
with one button

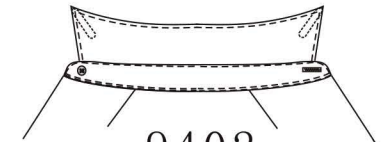


9401
Square collar band
with one button

Collar stay style

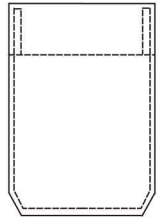


△ 9404
No collar stay



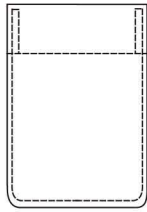
9402
Fixed collar stay

Pocket style



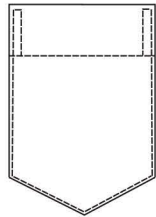
91H1

Hexagon pocket



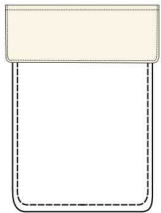
91G8

Round pocket



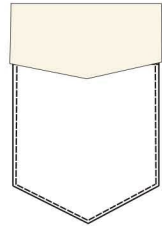
91G9

Triangle pocket



99M9

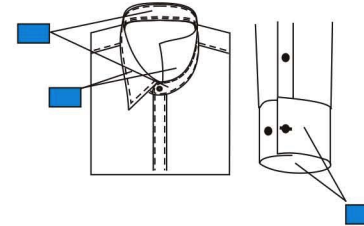
Round pocket with round flap



9827

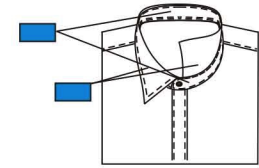
Triangle pocket with triangle flap

Contrast position



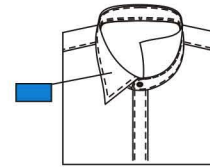
9610

Collar and cuff contrast fabric—



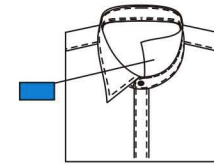
9611

Collar contrast fabric—



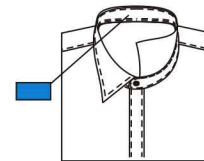
9239

The contrast fabric for top side of collar—



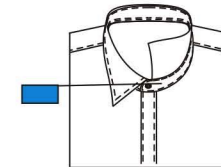
9613

The contrast fabric for inside collar—



9614

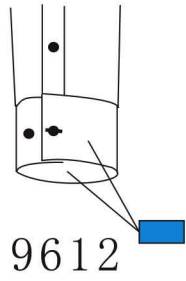
The contrast fabric for inside collar band—



9240

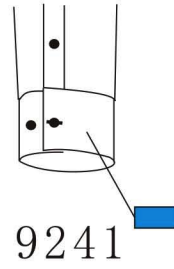
The contrast fabric for exterior collar band—

Contrast position



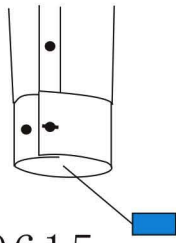
9612

The contrast fabric for cuff—



9241

The contrast fabric for top side of cuff—



9615

The contrast fabric for inside of cuff—

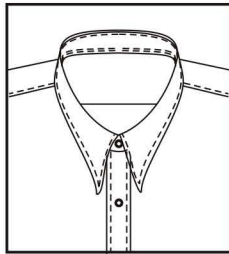
Placket width

- 91A4 Placket width 2.0cm
- 91A5 Placket width 2.5cm
- 91A6 Placket width 3.0cm

Cuff height

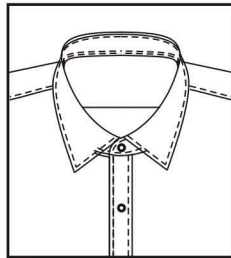
- 91L2 Cuff height 2.0cm
- 91L3 Cuff height 3.0cm
- 9804 Cuff height 4.0cm
- 9649 Cuff height 5.0cm
- 91L4 Cuff height 6.0cm
- 91L5 Cuff height 6.5cm
- 9661 Cuff height 7.0cm
- 9662 Cuff height 8.5cm
- 91L7 Cuff height 7.0cm,4cm
- 92A6 Cuff height 5.0cm,6cm
- 91L6 Cuff height 11.0cm
- 9650 Cuff height 5.0cm, 7cm

Closed collar style



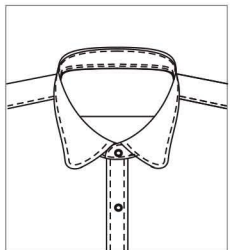
Pointed collar

- 9368 Small pointed collar, collar length 4.2cm
- 9307 Small pointed collar, collar length 4.8cm
- 91N9 Middle pointed collar, collar length 5.4cm
- 9B30 Middle pointed collar, collar length 6.6cm
- 9369 Big pointed collar, collar length 7.2cm
- △91A3 Big pointed collar, collar length 7.8cm



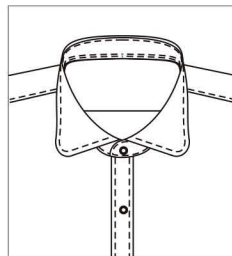
Square collar

- 9305 Small square collar, collar length 4.2cm
- 9370 Small square collar, collar length 4.8cm
- 9306 Middle square collar, collar length 5.4cm
- 9372 Middle square collar, collar length 6.0cm
- 9371 Middle square collar, collar length 6.6cm
- 9373 Big pointed collar, collar length 7.2cm
- 9303 Big pointed collar, collar length 7.8cm



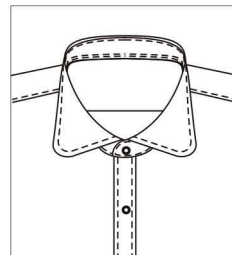
91M7

Small round collar



91M8

Middle round collar

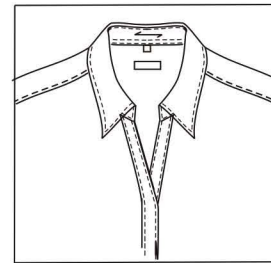


91M9

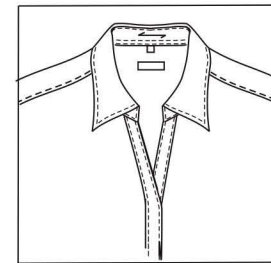
Big round collar

V shape collar style

20

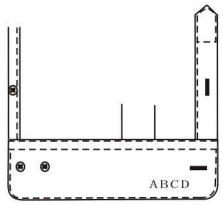


- 9415 V shape small pointed collar, collar length 4.2cm
- 9416 V shape small pointed collar, collar length 4.8cm
- 9417 V shape middle pointed collar, collar length 5.4cm
- 9418 V shape middle pointed collar, collar length 6.0cm
- 9420 V shape large pointed collar, collar length 7.2cm
- 92A2 V shape middle pointed collar, collar length 6.6cm
- 92A3 V shape large pointed collar, collar length 7.8cm

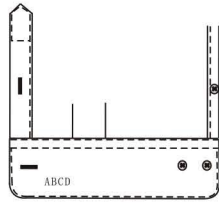


- 9409 V shape small square collar, collar length 4.2cm
- 9410 V shape small square collar, collar length 4.8cm
- 9411 V shape middle square collar, collar length 6.0cm
- 9412 V shape middle square collar, collar length 6.6cm
- 9413 V shape middle square collar, collar length 5.4cm
- 9414 V shape large square collar, collar length 7.8cm
- 9353 V shape large square collar, collar length 7.2cm

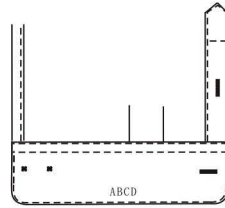
Mono position



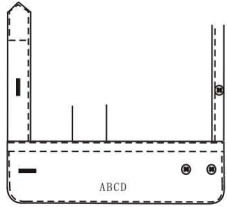
Right cuff



Left cuff



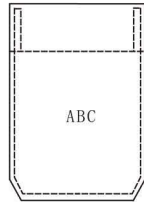
Middle of left cuff



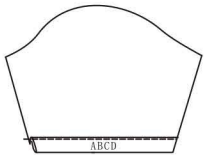
Middle of right cuff



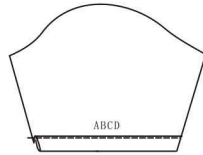
Left/right big extender



Middle of the pocket



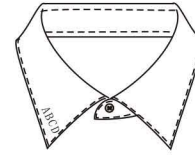
Right middle of the short sleeve hem



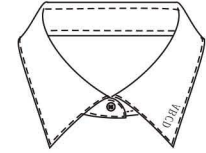
Left middle of the short sleeve hem

Right middle of the short sleeve
3cm above the hem

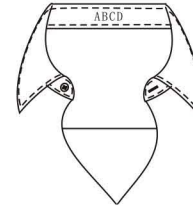
Mono position



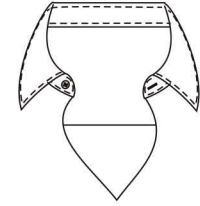
Left collar point



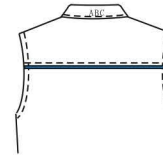
Right collar point



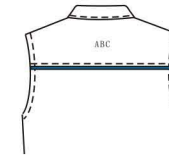
Middle of the inside collar band



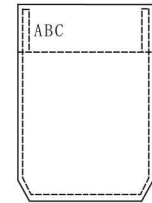
On the yoke



Middle of the outside
collar band



On the yoke



Right side of pocket hem

Mono position

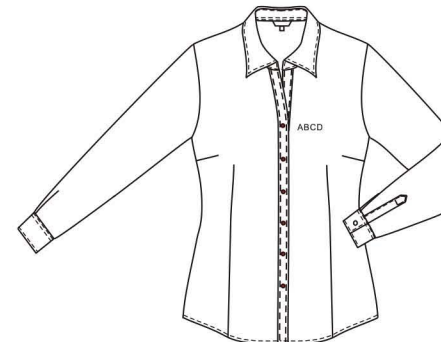


5cm above the right placket bottom

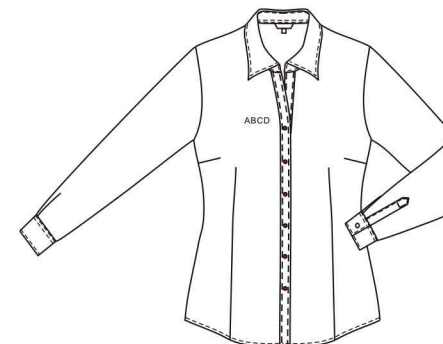


Left chest

Mono position

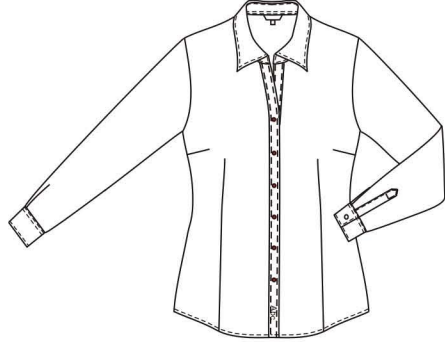


3cm above left pocket, 6cm to placket

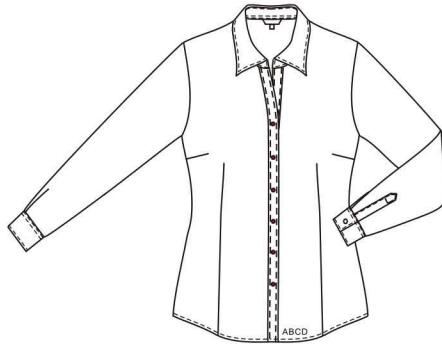


3cm above right pocket, 6cm to placket

Mono position

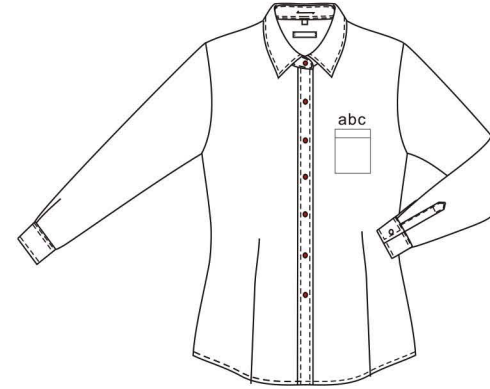


2cm above right placket (Vertical)

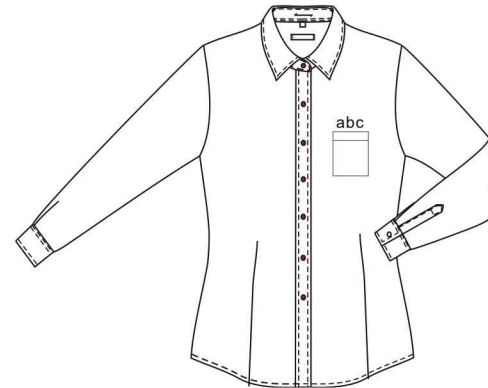


on left panel, 2cm above bottom,
2cm to placket

Mono position

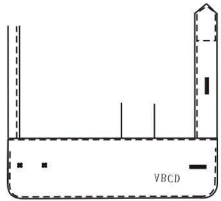


0.5cm above pocket opening

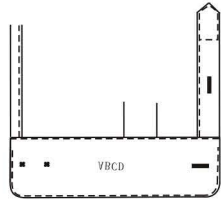


1.0cm above pocket opening

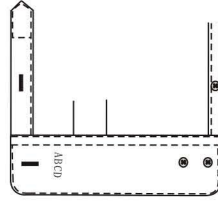
Mono position



Inside of left cuff



Middle of inside left cuff



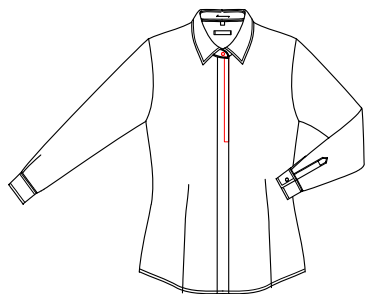
On side of right cuff
on side of left cuff



middle of left/right
big extender

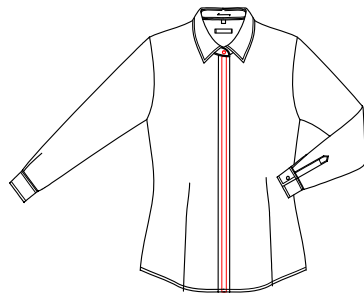


Special placket



93Y7

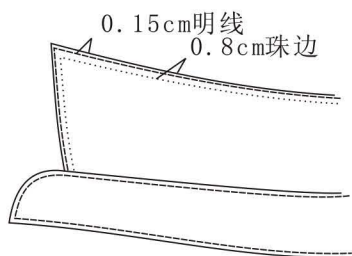
0.6cm piping for outer folded
Hidden placket edge till to
the third button(excluding
collar band button)



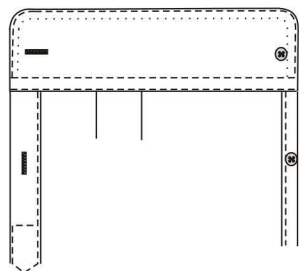
99P4

Stitch decorate fabric
stipe on Fly front for
tuxedo--

Collar/cuff pic stitch



Collar pic stitch



Cuff pic stitch

- 9602 Collar pic stitch - match stripe
- 9604 Collar pic stitch - customer appointed—
- 9603 Cuff pic stitch - match stripe
- 9605 Cuff pic stitch - customer appointed—
- 9600 Collar cuff pic stitch - match stripe
- 9601 Collar cuff pic stitch - customer appointed—

Buttonhole style

25



92H3

4 groups buttons
(2 buttons, 2 buttonholes)



9895

3 groups buttons
(3 buttons, 3 buttonholes)



91L8

2 buttons 2 buttonholes as group on placket