



Women Overcoa

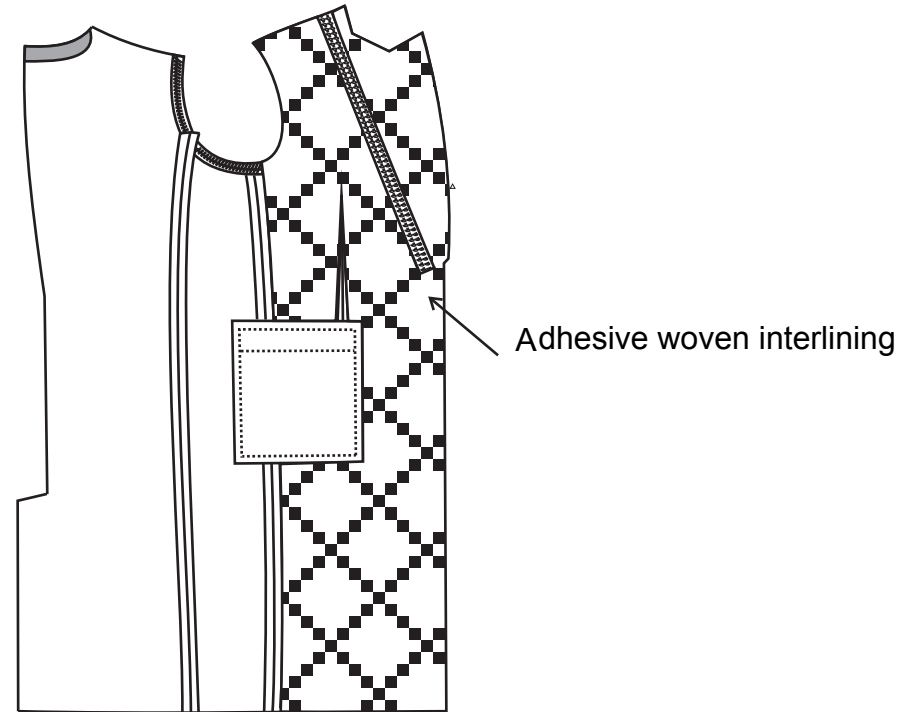
Design Manual

MTM Introduction

1. This code " " means standard craftsmanship of RCMTM, while the code with " * " means special craftsmanship for tuxedo.
2. If customer do not choose any style for one item, we will do the standard.
3. The craftsmanship in same item can not be chosen at the same time.
4. Code with " " are the default, no need to put into system again.

WA00 Women Overcoat

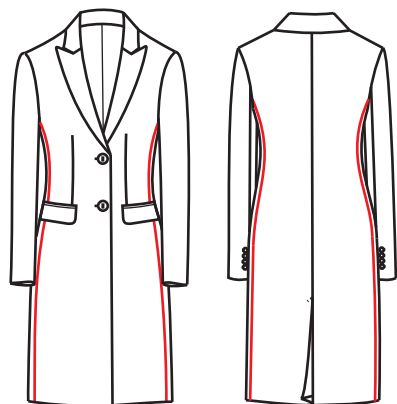
Canvas



△00D1

No Chest Canvas

Body Construction



△WA05

3pcs on front & back



WA06

8pcs on front & back

Chest Dart



△W521

Standard



W525

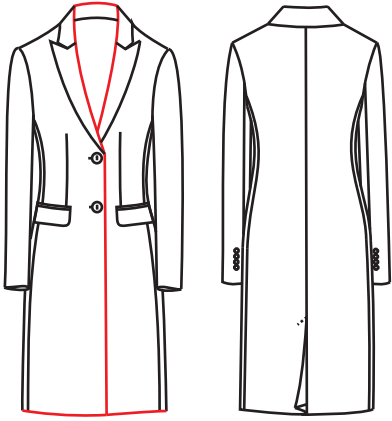
Chest dart to bottom



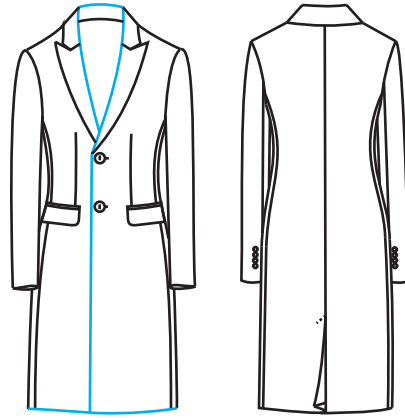
W52C

No front chest dart with
french dart to the bottom

Front Style

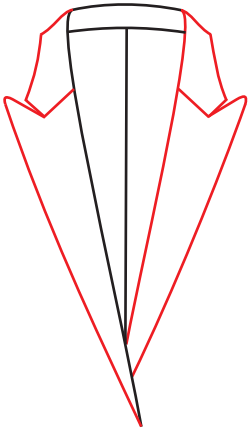


△ W901
Front cover left

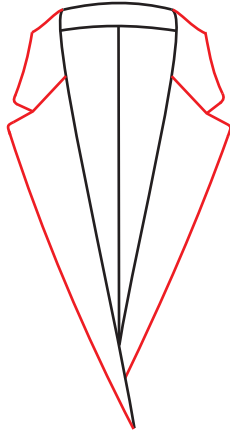


W902
Left cover right

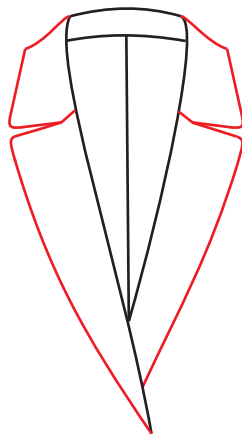
Lapel



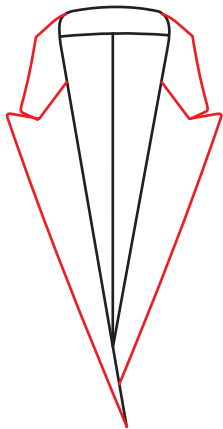
△ W003
Peak Lapel



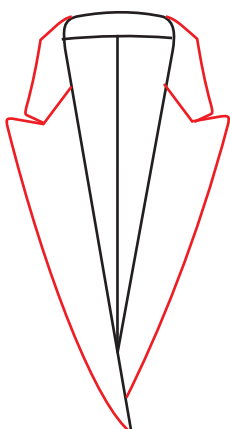
W001
Notch Lapel



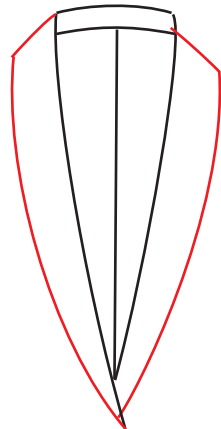
W002
PK Lapel



W004
Semi- Peak Lapel

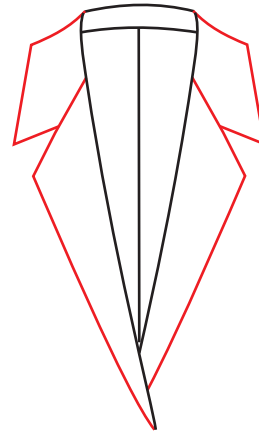


W00C
Arc under part
Semi-Peak Lapel

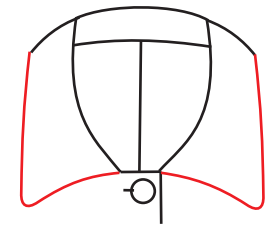


W005
Shawl Lapel

Lapel

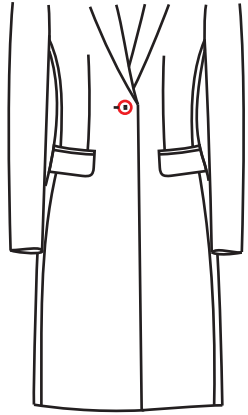


W00Y
SV Big Peak Lapel

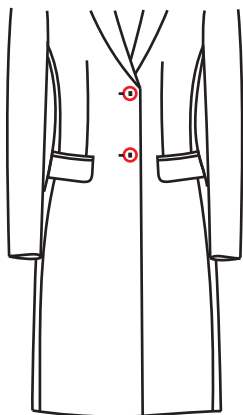


W007
Close Lapel

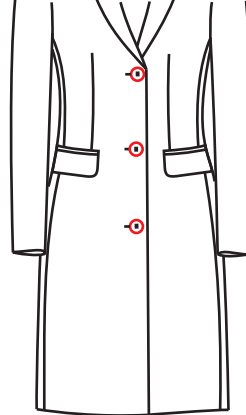
Front Button



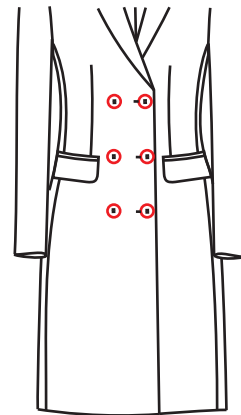
W011
Single Breasted
1 button



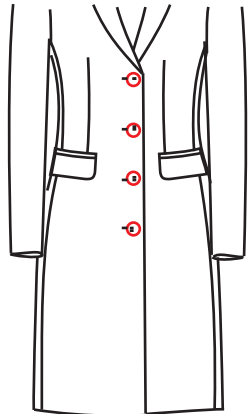
△ W012
Single Breasted
2 buttons



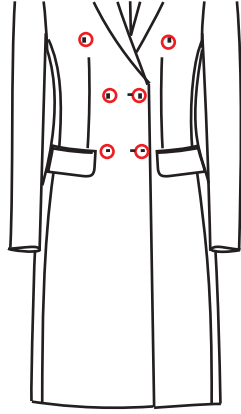
W013
Single Breasted
3 buttons



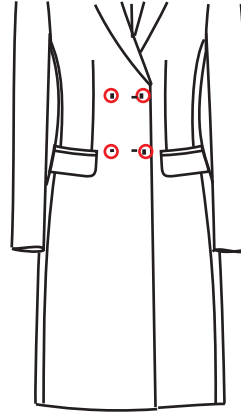
W019
Double Breasted
6 buttons
(3 buttons fasten)



W014
Single Breasted
4 buttons

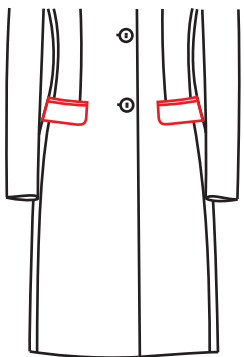


W016
Double Breasted
6 buttons
(2 buttons fasten)



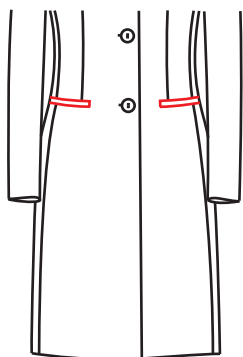
W015
Double Breasted
4 buttons
(2 buttons fasten)

Lower Pocket



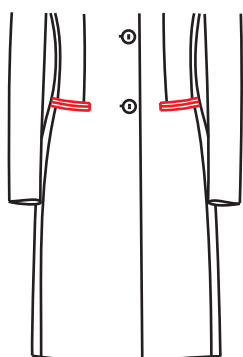
△ W201

Normal pocket
(double besom with flap)



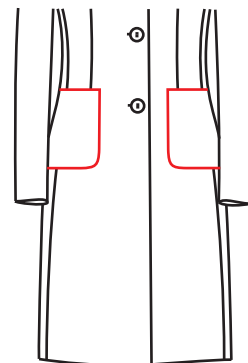
W261

Single besom Pocket



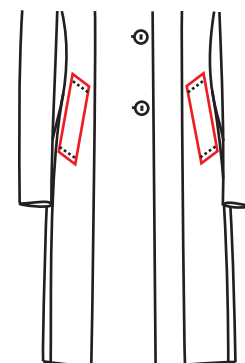
W231

Double besom pocket



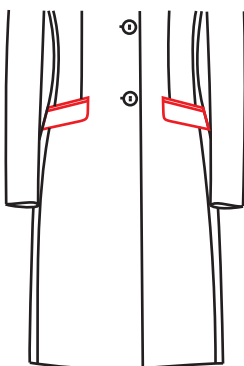
W2J1

Patch pocket



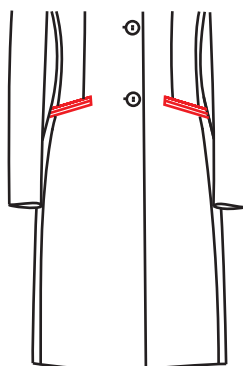
WX0A

Very Slant pocket with
5cm single besom



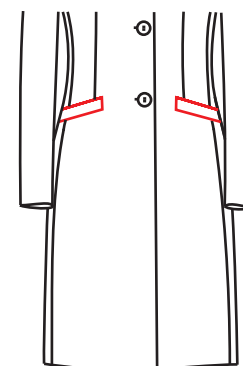
W2A1

Normal slant pocket
(double besom with flap)



W2D1

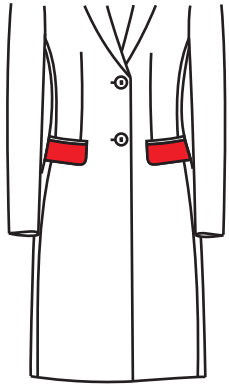
Double besom
slant pocket



W2D3

Slant pocket with 1.5cm
single besom

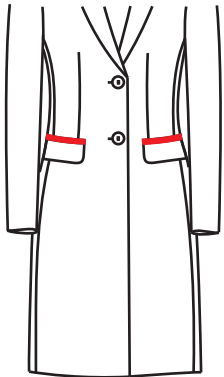
Lower Pocket Flap



W3A1

Lower pocket outside flap use appointed material

Lower Pocket Besom



W659

Lower pocket besom use appointed material

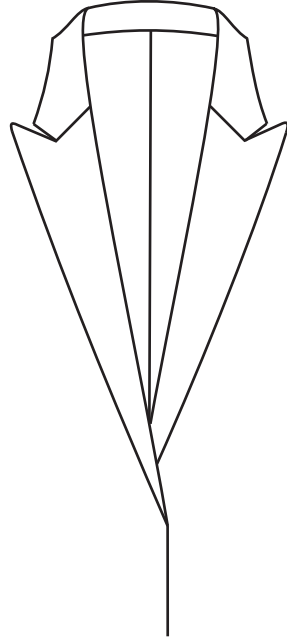
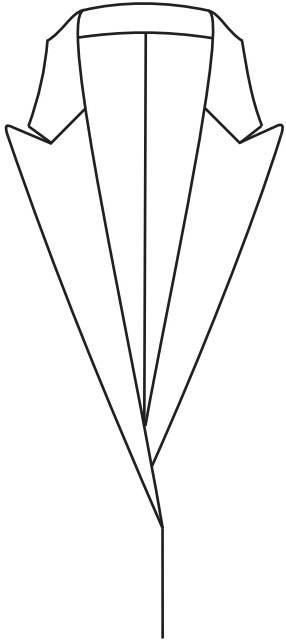
Chest Pocket



W101

Normal chest pocket

Collar Felt

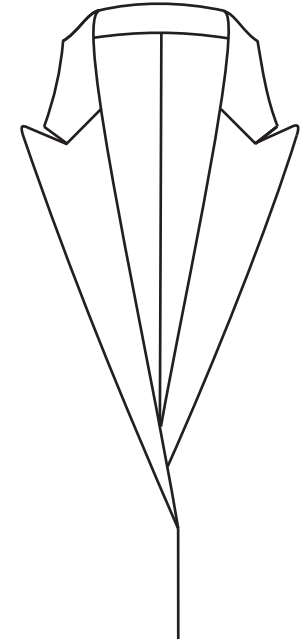
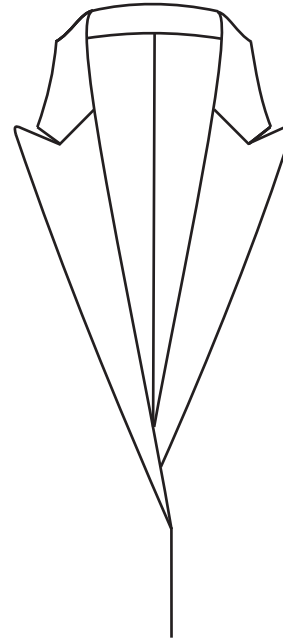
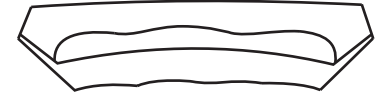


W676

W678

Appointed collar felt

Inside collar felt use appointed fabrics



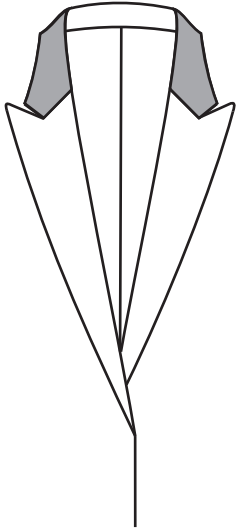
△ W674

W673

Collar felt match fabric color

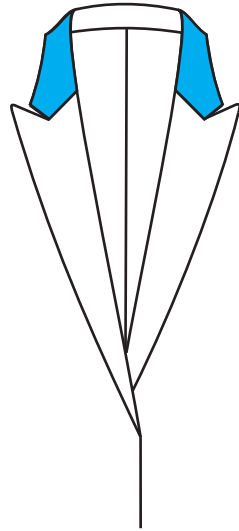
Inside collar use main fabrics

Collar Surface Material



W651

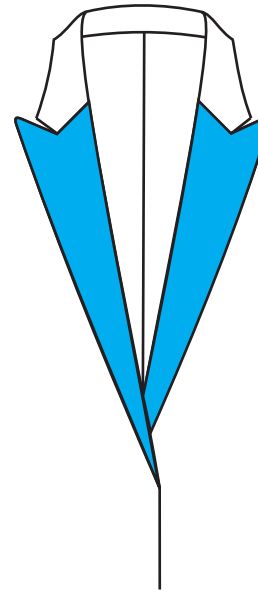
Collar surface fabric appointed
(The other side)



W65V

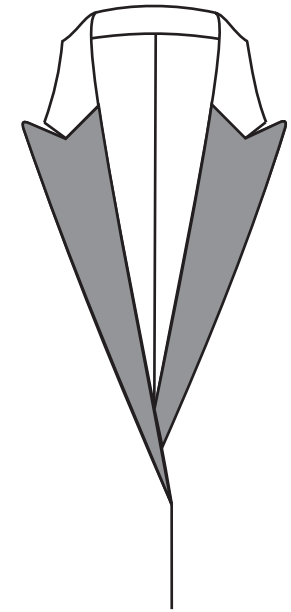
Collar surface use appointed fabrics

Lapel Material



W65Q

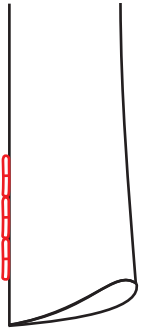
Lapel use appointed fabrics



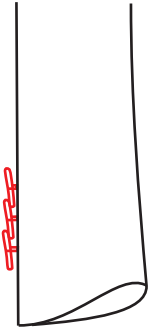
W652

Lapel fabric appointed
(The other side)

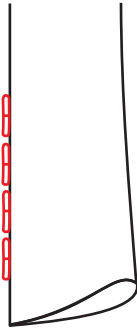
Cuff Style



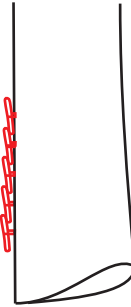
W624
3 flat buttons



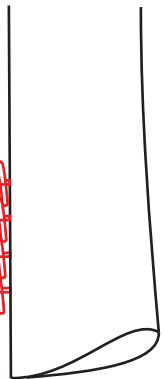
W625
3 kissing buttons



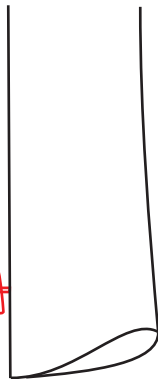
△ W621
4 flat buttons



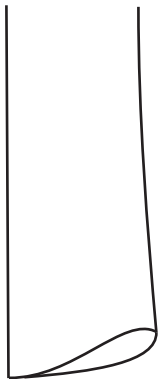
W627
5 kissing buttons



W622
4 kissing buttons

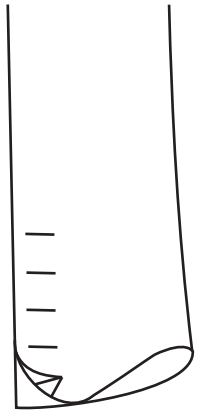


W623
1 big buttons in size 32L



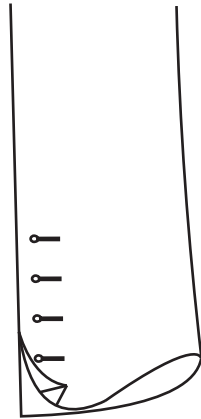
W626
No buttons

Sleeve Slit Options



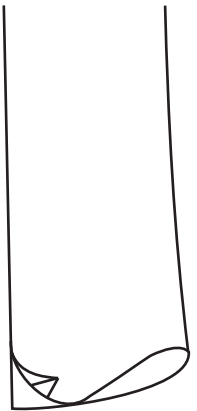
△ W611

Imitation slit, imitation buttonhole



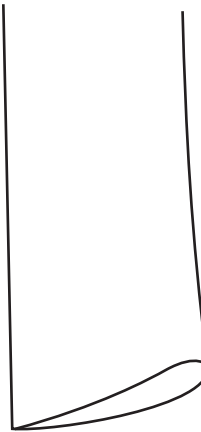
W612

Workable slit, workable buttonhole



W614

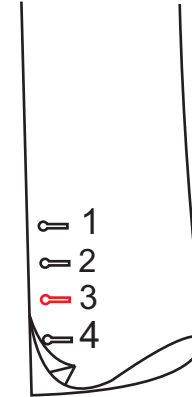
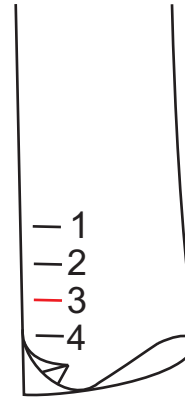
Normal sleeve slit without
button & buttonhole



W613

No sleeve slit, no buttonhole

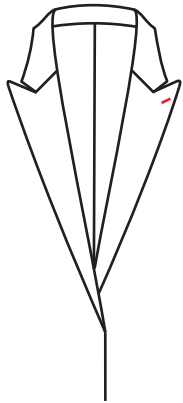
Sleeve Buttonhole Options



W923

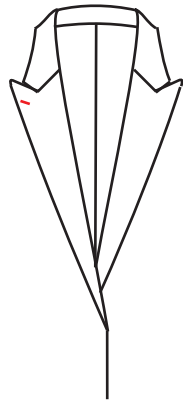
The third sleeve buttonhole use appointed thread color

Lapel Buttonhole Position



W541

Left lapel buttonhole only



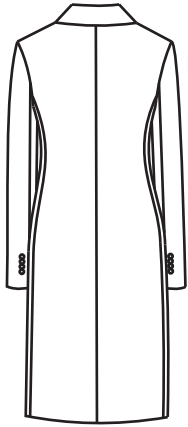
W542

Right lapel buttonhole only

Lapel buttonhole Style

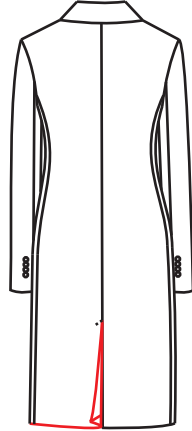
W64Q Handmade lapel buttonhole
(Not working for stand collar)

Back Vent Options



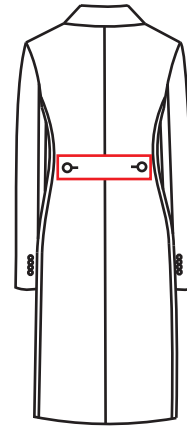
W4N0

No vent
No vent



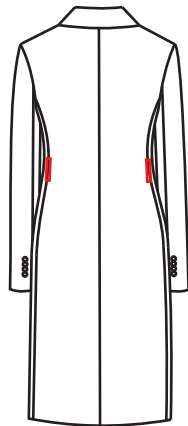
△ W4N1

Single vent



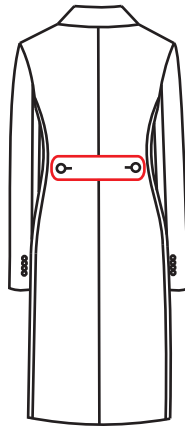
W4XC

Back belt width 5cm
Square end with button&buttonhole



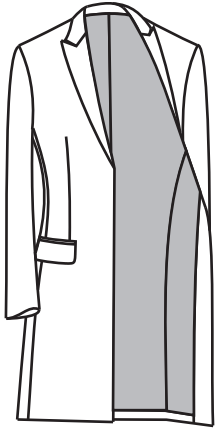
W4N7

No vent, 2 belt loops on
waist side seam with long belt



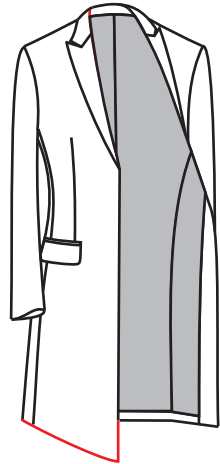
W4X2

Lining & Bottom Options



△ W5C5

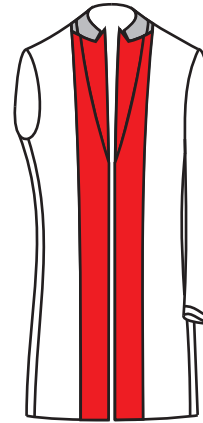
Full lining with straight bottom



W5CK

Full lining with CNV slant straight bottom (Right part is longer than left)

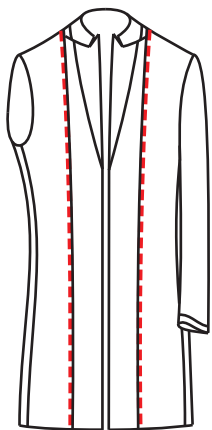
Facing Options



△ W701

Inner facing A

Inner Pic Stitching Options



W851

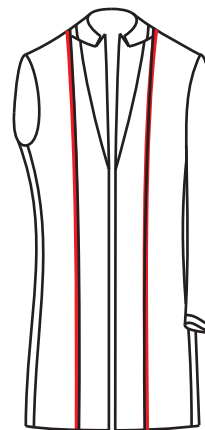
Inner pic stitching

Inner Pic Stitching Color Options

W85T Inner pic stitching use appointed thread color-

W85L Inner pic stitching thread color match with fabric color

Facing Piping Options

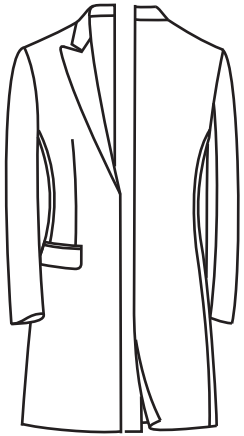


W852

Inner facing with piping edge

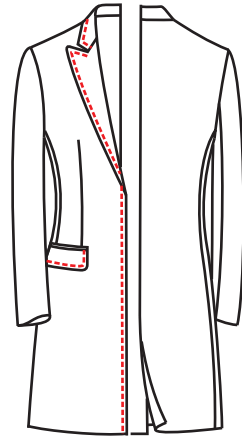
W853 Inner facing use appointed fabric for piping edge-

Outside Pic/Top Stitching Options



W570

No outside pic stitching



W571

0.3cm pic stitching for front(including lapel)
Collar, Pocket Flap

W578 0.3cm pic stitching for front(including lapel)
Collar, Chest pocket

W576 0.6cm pic stitching for front(including lapel)
Collar, Lower Pocket, Chest pocket

W572 0.8cm pic stitching for front(including lapel)
Collar, Pocket Flap

W5L3 0.6cm pic stitching for front(including lapel), collar

W574 0.8cm pic stitching for front(including lapel), collar

Back Lining Color Options



W714

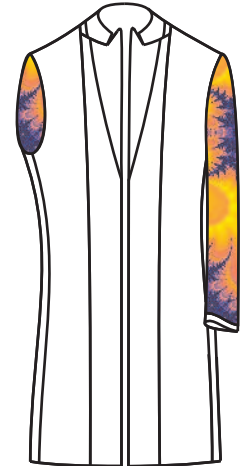
Appointed back lining-

Sleeve Lining Options



△ W721

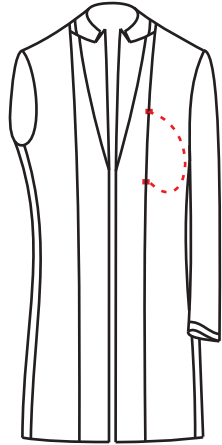
Match color lining



W724

Appointed sleeve lining-

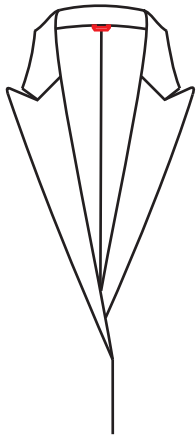
Right Inner Pocket Style



W821

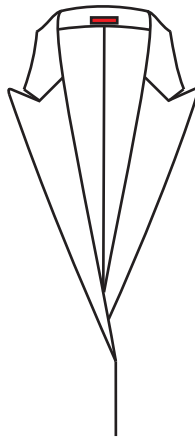
Hidden slant inner pocket on the side seam on the right facing
(Pocket length 13.5cm with 0.5cm dart on the pocket edge)

Hanger Loop Style & Position



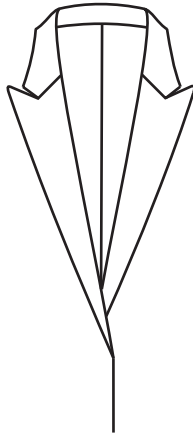
W882

Silk hanger loop
below the collar



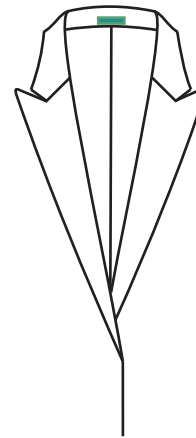
△ W881

Silk hanger loop
on the collar



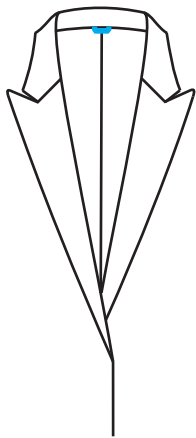
W885

No hanger loop



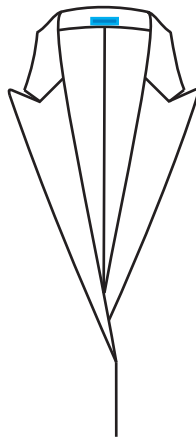
W88A

Fabric hanger loop on the collar
(Potential risk of not flat enough)



W888

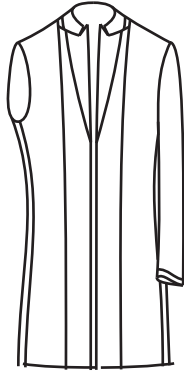
Appointed hanger loop
below the collar-



W887

Appointed hanger loop
on the collar -

Brand Label Position



△W870 No brand label

W874 Brand label on the 30cm below the armpit
1cm to the right facing

W9Y2 Brand label on the 30cm below the armpit
1cm to the left facing

W9Y4 Brand label on the 5cm below the armpit
1cm to the right facing

Fabric Lapel Position

W872 Fabric label on the 30cm below the armpit
1cm to the right facing

W876 Fabric label on the 5cm below the armpit
1cm to the left facing

Clients Name Label Position

△W87A No name label

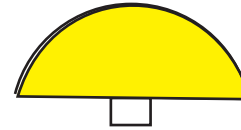
W87B Name label on the 3.5cm below the armpit
1cm to the right facing

W873 Name label top edge same place with left armpit
2cm to the edge

Care Label Postion

△ W87V Care Label on the 30cm below the right armpit

Button Options



W63A

Appointed fabric for
coverd buttons-



W635

Appointed fabric for
flat coverd buttons-



W636

Use body fabric for
flat cover buttons-

W638 Appointed buttons-

W92S Appointed buttons for front button-

W99J Appointed buttons for sleeve button-

