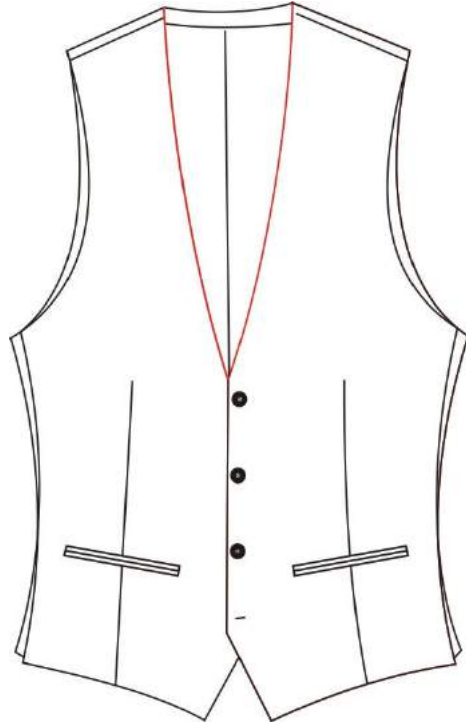


# Collar





4000 Standard V shape,no collar



4001 U shape,no collar



4004 Notch lapel,no collar band



4006 Peak lapel no collar band



4003 Shawl lapel,no collar band



4005 Notch lapel with collar band



4007 Peak lapel with collar band



4002Shawl lapel with collar band



4012 Semi-Notch lapel with collar band



4014 Semi-peak lapel with collar band



465Q lapel using customer appointed fabric



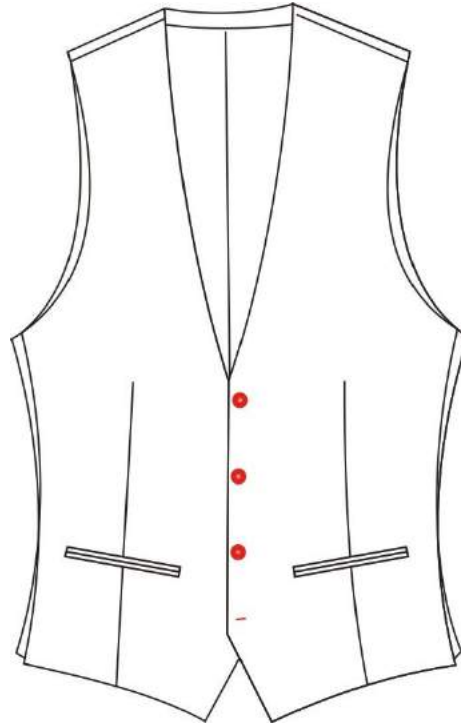
4544 NO lapel sham buttonhole



4545 Left two lapel sham buttonholes

4558 Lapel buttonhole thread appointed

## Front buttons





401C Single breasted 3 buttons  
401J Pointed bottom



401D Single breasted 4 buttons  
401J Pointed bottom



401G Single breasted five buttons  
401J Pointed bottom



401P Single breasted 6 buttons  
401J Pointed bottom



401M Double breasted 4 buttons with 2 fasten  
401Z Square bottom



402A Double breasted 5 buttons with  
3 fasten(V style)  
same buttonhole same level  
402B slant front with Pointed bottom



401K Double breasted 6 buttons with 3 fasten  
401Z Square bottom



401L Double breasted 8 buttons with 4 fasten  
401J Pointed bottom



4010 Single breasted eight buttons



401H suqre bottom with slant front  
401K Double breasted 6 buttons with 3 fasten



46A4 last buttonhole of the front  
customer appointed thread



4642 slant button hole

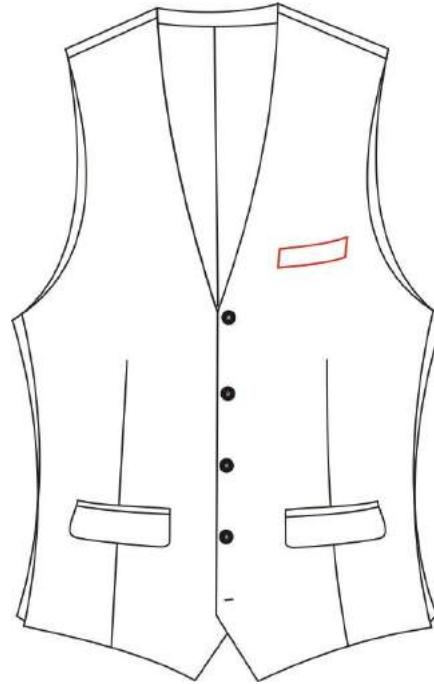


4239 satin wrapping buttons



4270 fabrics wrapping buttons

# Chest pocket





4111 Left single besom breast pocket



4125 Left patch breast pocket



4112 Left double besom breast pocket



4110 Left ship pocket



4117 left double besom breast pocket with diamond flap and button



4113 Left double besom breast pocket with flap



4193 left&right slant double besom breast pocket





4143 Left/right double besom breast pockets

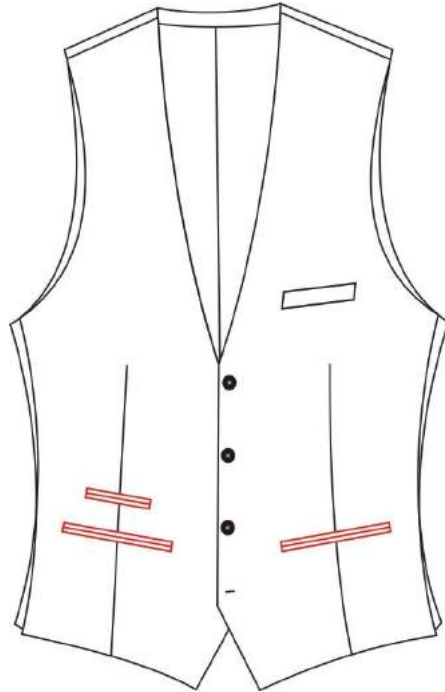


41C2 left welt chest pen pocket



41U9

## Pocket&ticket pocket





4151 No lower pocket



4300 normal welt lower pockets



4301 Double besom pockets



4302 Double besom with flap pockets



430B 1.0cm width welt lower pocket



4162 Patch lower pocket



41A0 normal welt lower pockets  
welt left chest pocket



41A2 double besom lower pocket  
with flap+left welt chest pocket

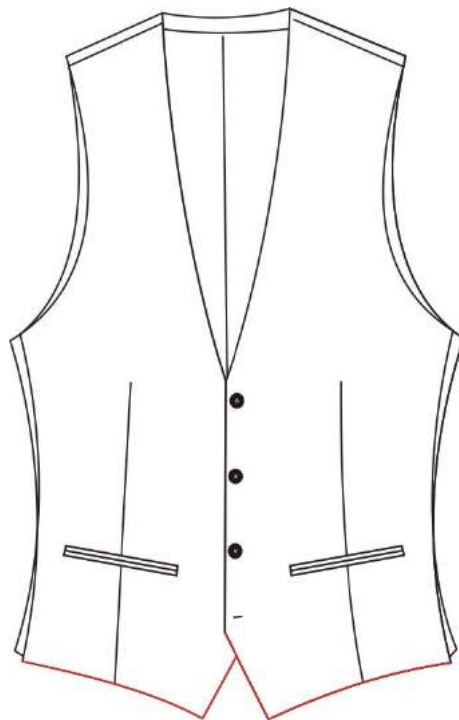


4204 left besom ticket pocket  
4300 normal welt lower pockets



4203 double besom ticket pocket  
4301 Double besom pockets

# Bottom





401J Pointed bottom



401T Slightly pointed bottom



402B slant front with Pointed bottom

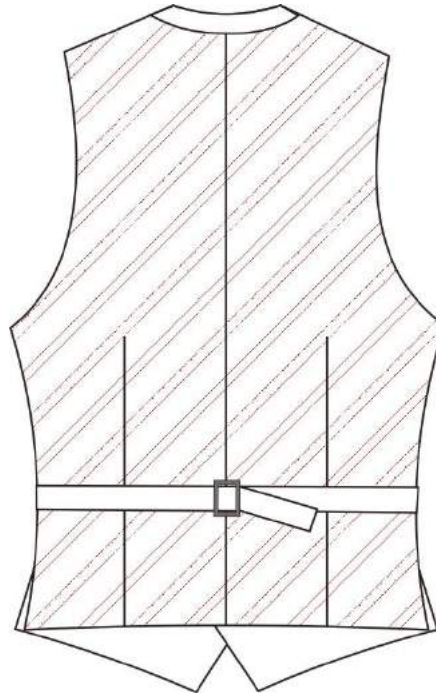


401Z Square bottom



401Y Round bottom

# Back





4211 Back use fabric  
4202 standard without belt



4200 Standard vest with strap  
4212 Back lining appointed  
42B1 Back belt use the same fabric with back



4210 Back lining match main fabric



4211 Back use fabric  
42B1 Back belt use the same fabric with back  
4200 Standard vest with strap



4211 Back use fabric  
42B1 Back belt use the same fabric with back  
42C1 Back strap appointed-QZMAB08