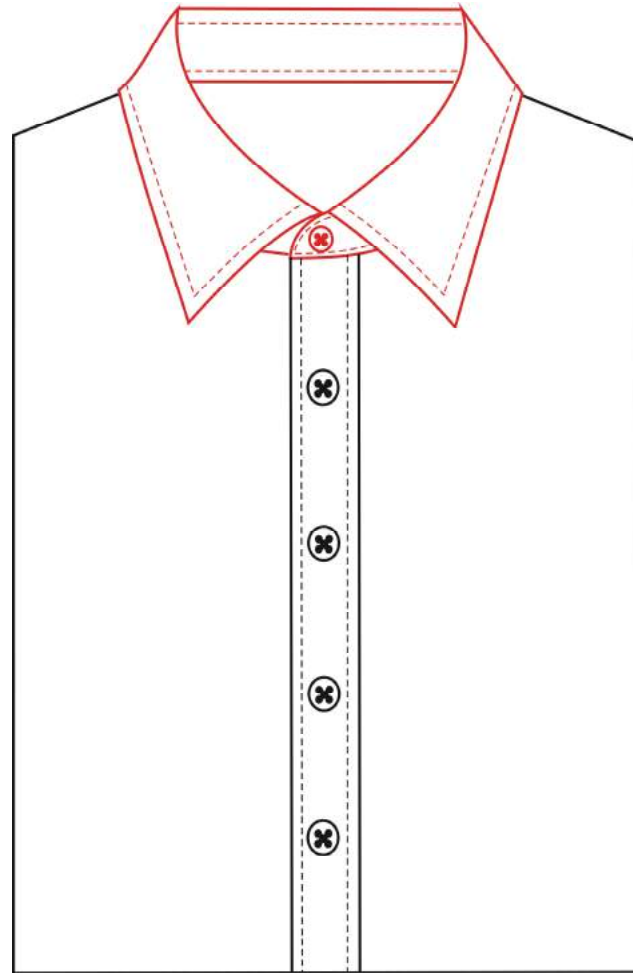


Collar





5AK7 Small pointed collar D



5AL1 Small pointed collar E



5AL4 Small squared collar G



5AL5 Middle squared collar G
5512 collar fabric---



5I02 RP-LZ-1#



5I15 2 #



5250 Band collar



5AL7 Small cut away collar H



5AM2 Middle cut away collar N



5AL2 Middle pointed collar E



5I04 RP-LZ-3#wing collar



5G26 Double collar, below collar is 1.2cm larger than upper collar

5B12 double layer collar with customer appointed contract fabric on lower collar



5B09 collar band connection with hidden shape pleat and bar tack



548S collar B1 shape with collar surface 1.5cm pleat



5I13 RP-LZ-1# round collar



5251 57#Band collar



5240 Small rounded points collar



5357 50# band collar
9A22 Front collar band 2.5cm



5AL3 Large pointed collar E
9A52 Collar point 8.2cm



5AM1 Small cut away collar N



5AL8 Middle cut away collar H



548P Add 0.3cm pinding between
up and bottom collar, pinding appointed--



5L64 double ply collar
level inner ply with outside ply
0.7 height difference from inner with outside



5L50 hexagon E



5260 95# tuxedo collar
top stitck 0.15cm



5AK9 Large pointed collar D



5210 Middle squared collar



5AJ3 58#band collar with dabric tape-



5FA3 51 collar 5FA5 Front neckline 1.2 cm high
5AF2 Collar stand cutting
least hole sewing least button
5AF5 Front collar band 1.2cm
5274 Squared collar band w/one button
9A11 collar band width 3.2cm



548M Collar A5: double pick stitch
no collar stay, stitch distance 3cm



5FA3 51 collar 5FA5 Front neckline 1.2 cm high
5AF5 Front collar band 1.2cm



5AX9 customer appointed
big triangle fabric on collar-



5B13 1/2 part of top collar with appointed contrast fabric



500G Collar G: quadruple vertical
facing edges customer appointed——



500E Collar E: single horizontal
facing edge customer appointed——



5AX8 customer appointed
small triangle fabric on collar point-



5AL4 Small squared collar G
57C1 collar without top stitch
(one line inner the collar)

- 5764 collar 14.5cm part break open contrast
- 5762 collar point 9.5cm part contrast-
- 9A13 collar band width 4.2cm
- 9A01 collar point 6.4cm



5552 Top collar appointed-



5512 collar fabric---



547C collar O,contrast--

5549 outside of collar band contrast fabric-



5679 1/2part of band collar
left band collar stictch 8cm fabric appointed

5680 1/2 below part of band collar
with fabric contrast-

5L51 band collar 1



5358 59 favors collar top 1 cm fabric appointed



5533 collar band contrast



5290 Collar point w/button



5059 collar with eyeletes



5284 collar phoenix eye
only for no collar tab



5C52 Point tab with button
the distance of the point tab to knot is 1.7cm



57C1 collar without top stitch(one line inner the collar)



5270 Rounded collar band w/one button



5274 Squared collar band w/one button



5273 Rounded collar band w/three button



5271 Rounded collar band w/two button



5279 Notched collar band w/two buttons



9A22 front collar stand height 2.5cm
5250 Band collar 56#

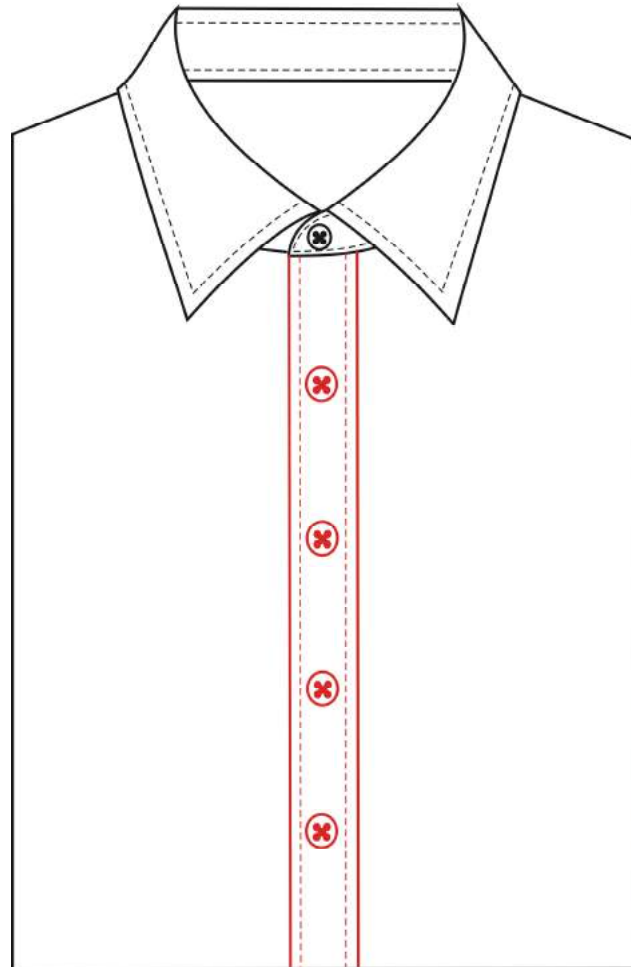


9A21 front collar stand height 2.2cm
5251 band collar #57
5274 Squared collar band w/one button



9A72 front collar stand height 3.5cm
5271 Rounded collar band w/two button
5AM2 Middle cut away collar N

Placket





5100 Plain front



5101 Placket



5103 hidden button placket



520F 1/3 hidden button front
5556 1/3 hidden button front
inner hidden part use contrast fabric
customer appoint contrast fabric



5105 1/2 hidden button front



520D Gripping hidden button front



520Q Left & right placket front



5102 Un-functional placket front
5716 0.6cm top stitch on placket



530N Slant contrast fabric between second and third Front button
3.5cm width contrast fabric on right placket



5G51 Gripping hidden button front
0.3cm piping on left placket



530R 0.3cm piping on placket
customer supplied piping-



532T 1.5cm piping on central of placket
customer supplied piping-



5555 1/2 hidden placket
1/2 hidden placket contrast
customer appointed-



5557 0.3cm exposed part
for inner placket of hidden front
with appointed fabric-



520C outer folded placket
with knots of 3cm top
&3.7cm bottom with appointed fabric-



5536 hidden placket--



520B Hidden button roll outward and knot



521E Fly front for tuxedo



531Y 0.6cm bartack between front buttonholes
5103 Hidden button front



520A hidden front pull-over shirt
with 3 buttons

5596 pullover style left front fly
customer appointed color



5716 0.6cm top stitch on placket



5285 right placket contrast fabric
to the middle between the third and fourth button
1cm will be seen after dressed



521A Inner plain front edge
45 degree diagonal cut and splice
outer showing 0.3cm
splice piping customer appointed fabric--
5542 Right placket top appointed



5634 Left placket inner



510A placket width 2.0cm



510B placket width 2.5cm



510C placket width 3cm



510E Placket width: 3.5cm

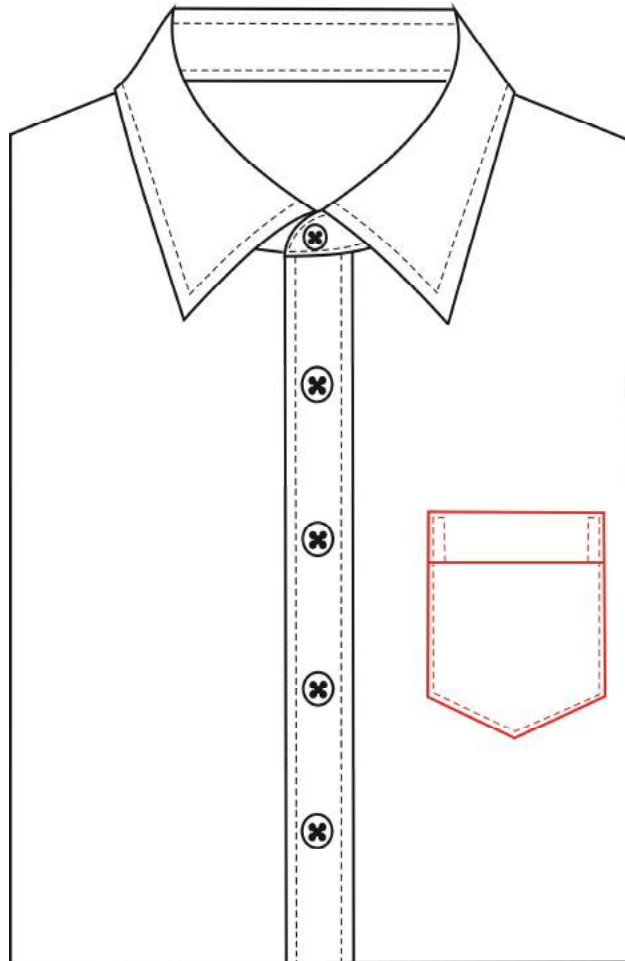


510K front width 4.0cm



510M front width 4.5cm

Pocket





5360 No pocket



538A Left pocket



5306 Hexagon pocket
Straight pleat with box pleat
538C Left&right pocket
5372 Hexagonal flap with one button



5312 Hexagon pocket Straight pleat



5300 Triangle pocket Straight pleat



5340 Square pocket straight pleat



5311 Hexagon pocket ornamental pleat



5319 Split square pocket



5884 Big square third dimension patch pocket



5FA1 Square three-dimension patch pocket

59Z5 Square flap, no button



5340 Square pocket straight pleat

5372 Hexagonal flap with one button

538C Pocket position: Left & Right



5312 Hexagon pocket Straight pleat

5375 Triangle flap with one button

538C Pocket position: Left & Right



5329 Rounded pocket with box pleat

5359 Add round bag

with a nail edge 1.5 cm each a grain of buckle

538C Pocket position: Left & Right



5321 Square pocket with hidden pocket double besom



5765 Double besom hidden pocket

with one tab and one button



5B22 Customer appointed fabric for lower pocket-
5B20 Double pockets



2323 Rounded pocket Straight pleat
5B43 1/2 pocket contrast fabric appointed



5320 Square pocket with hidden pocket besom
5554 special pocket welt——

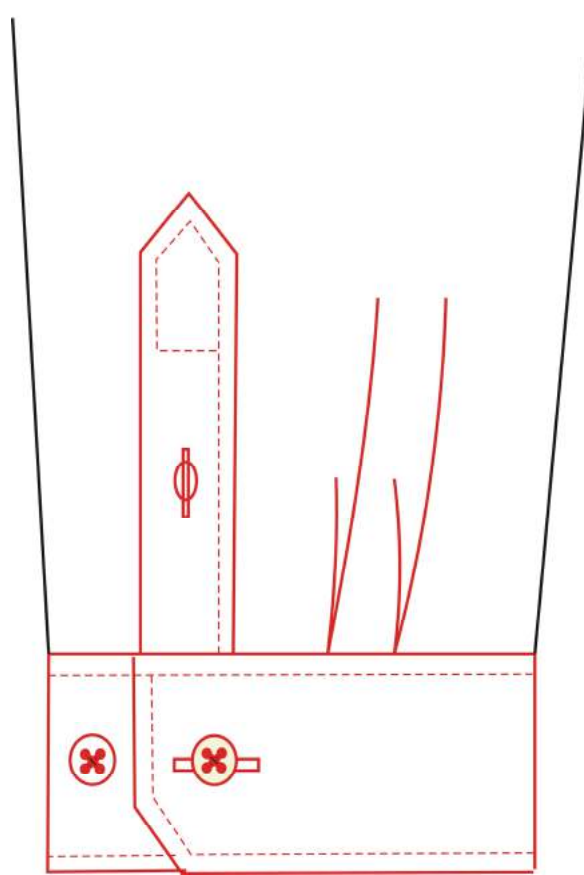


5300 Triangle pocket Straight pleat
599L customer appoint fabric of pocket



5300 Triangle pocket Straight pleat
5370 Vertical buttonhole with button
on chest pocket mouth

Cuff





5401 Square cuff two buttons & one buttonhole



5403 Square cuff three buttons
three buttonholes



5431 Hexagon cuff two buttons
one buttonholes

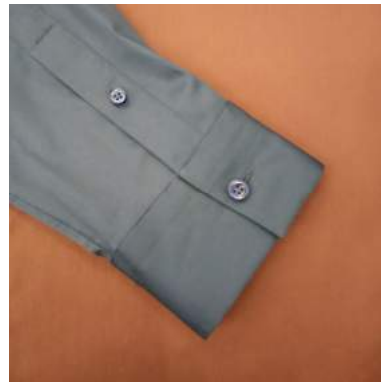


5418 Angled cuff

5534 Inner cuff appointed



5419 hexagon folded cuff



5400 Square cuff one button
& one buttonhole



5456 Large arc French cuff four buttonholes

546S Cuff width 6.5-7.5

5463 french cuff with no pleat

5534 Inner cuff appointed

563D big buttonhole on the side of sleeve placket

549J zonal cutting for inner side of the cuff



5411 Rounded cuff two buttons & one buttonhole

5513 cuff fabric appointed-



5410 Rounded cuff one button & one buttonhole



5443 Square cuff w/ two tab two button & two buttonholes



5459 French cuff double hexagon four buttonholes



5786 Hexagon cuff w/ two button & two buttonhole two buttons on the side of buttonhole of the smaller sleeve placket



545P One Button Fold



5432 Hexagon cuff two buttons



5455 Square French cuff four buttonholes



5415 Small rounded cuff two buttons & two buttonholes



5467 French square cuff with 6 buttonholes

5513 cuff fabric appointed-



5784 Small rounded cuff w/ two button & two buttonholes

two buttons on the side of buttonhole of the smaller sleeve placket



545B Semicircle French cuff two buttons

& two buttonholes



5458 Small arc French cuff four buttonholes



5406 Single square french cuff two buttonholes



5409 Single rounded french cuff two buttonholes



5414 Small rounded cuff one button & one buttonhole



5421 Large rounded cuff two buttons & one buttonhole



5430 Hexagon cuff one button



5402 Square cuff two buttons
&two buttonholes



5423 Large rounded cuff three buttons
&three buttonholes



54C1 straight cuff with two buttonholes and four buttons



501L cuff 1 shape, with three 0.5cm pleat
5513 cuff fabric appointed



545I Square cuff w/tab one button & one buttonholes



5426 French arch cuff one button & one buttonhole



5440 pointed cuff one button & one buttonhole



5453 Trapezoid French cuff two buttons & two buttonholes



5828 Double hexagon cuff outer cuff is 1.2cm higher than inner cuff
5B91 Double cuff inner cuff appointed



5568 hexagon cuff hexagon 1cm facing edge customer appointed



5B23 Customer appointed fabric for upper 1/2 cuff-



501H h'cuff two horizontal pipings attaching on the cuff the fabric of piping guest specified



501I i'cuff two vertical pipings attaching on the cuff the fabric of piping guest specified



547D 1cm contrast on cuff--



547L r'cuff folded angle bartack on the big side of sleeve pocket



547Y two welt on cuff edge (0.15 top stitch on cuff) customer appointed



564G 2.5cm contrast on cuff--



564M the cuff attached 1.5 cm pipping customer appoint the fabric of pipping



547Z cuff edge



547S X1'cuff cuff with 0.3cm piping
customer specified fabric-



564L cuff band connection with hidden
y shape pleat and bar tack



5575 cuff without top stitch(one line inner cuff)

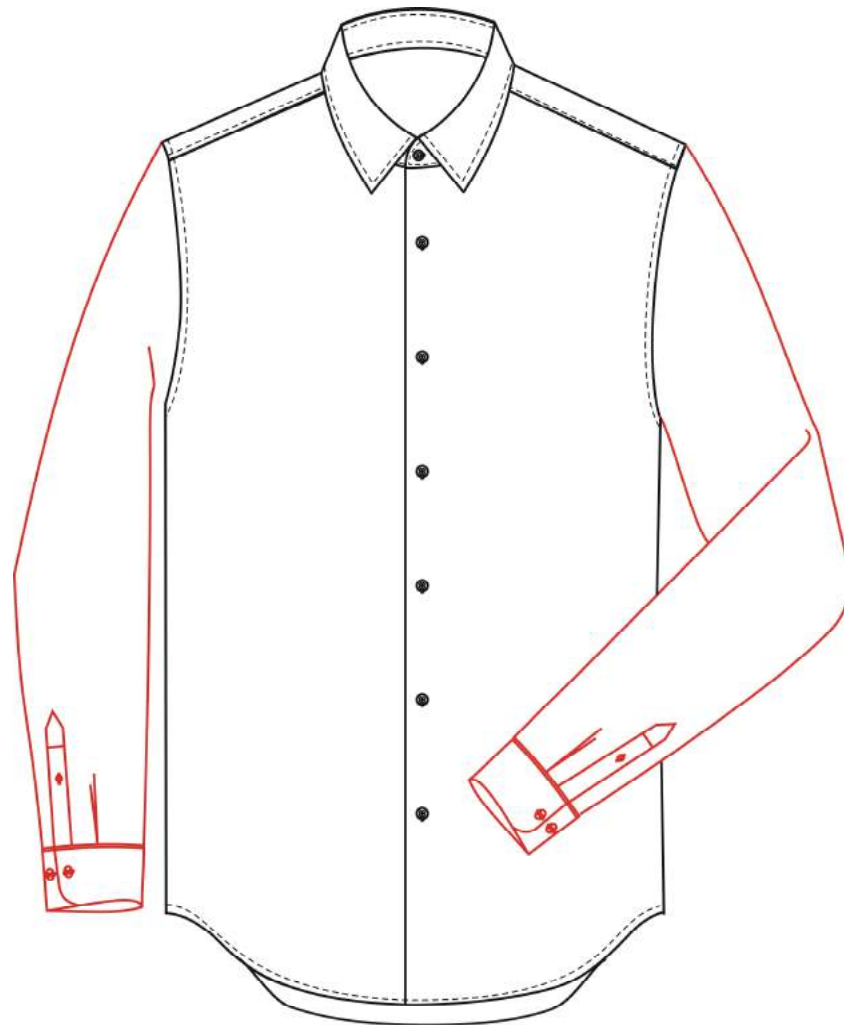


5461 Single cuff one sleeve pleat



5463 french cuff with no pleat

Sleeve





5FA7 Suit sleeve, sleeve hem 3 cm fold, press 2.9 cm open wire (no sleeve head height)



554N sleeve contrast fabric customer appointed fabric--
5560 big sleeve contrast--
5546 small sleeve placket--
5513 cuff fabric appointed



5AW6 Fabric split 30cm above sleeves appointed--
5560 big sleeve contrast--
5546 small sleeve placket--
5513 cuff fabric appointed



5B31 Fabric split 24cm above sleeves appointed--
5560 big sleeve contrast--
5546 small sleeve placket--
5513 cuff fabric appointed



5F40 Inside sleeve add 5cm patch appointed
5B23 Customer appointed fabric for upper 1/2 cuff-



54A0 short sleeve plain



54A1 Short sleeve Hem



54A4 Short sleeve with cuff



54A7 cuff hem of short sleeve--



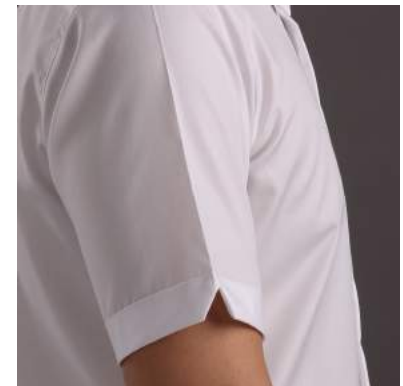
554K cuff of short sleeve--



5AC4 placket with tape on cuff
of short sleeve shirt



5G52 Short sleeve out folded
with 0.3cm piping



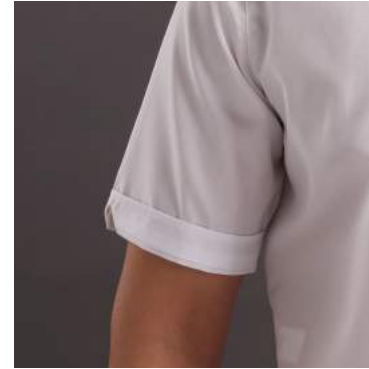
54A3 Short sleeve hem with slit



5778 Short sleeve with pointed belt

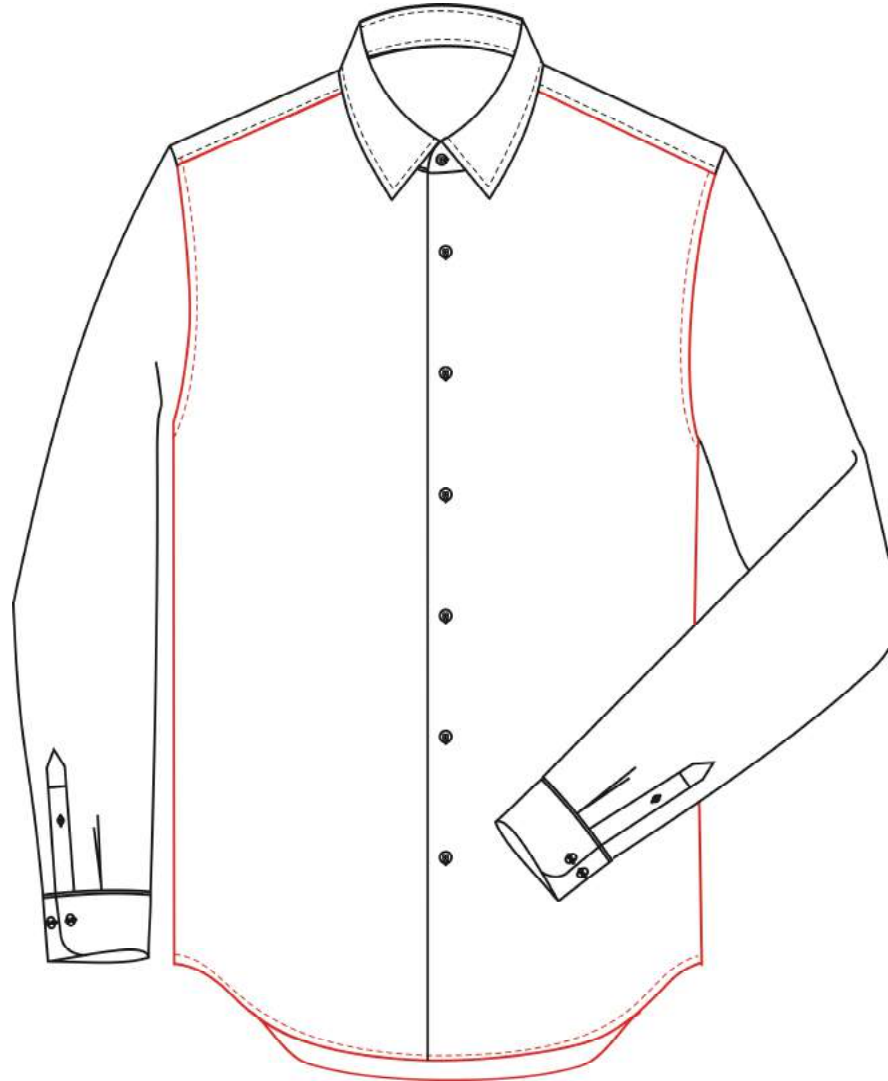


54A5 Short sleeve Hem with slit & one button



54B0 short sleeve shirt
cuff slit with 0.5cm outside contrast fabric

Front





530A Accordion pleats front with pleated patch (13 0.7cm width pleat each side)



530F add fabric to front piece



530J add 3cm fabric to the front piece fabric cut slantly



5F50 Right front split 12.5cm away from placket, left front split 3cm away from placket add another 5cm split with 3cm difference



5672 Right front split 2.5cm appointed with 10cm away from side seam



5673 Split down the middle between the last but one and the last but two button with 4cm contrast appointed-
5675 Split from last but one and last but two button in the right front upper front fabric appointed



5B55 Front vest patch appointed



5B56 Front vest patch with collar triangle patch appointed

5FB1 Right front split contrast with 1.5cm outside, contrast appointed



5060 Small U shape front patch
one patch on each side extends to
placement between 4th button and 5th button



5062 U shape front patch
one patch on each side extends to
the placement between last 2nd buttons
and 3rd buttons.



5065 Pleasts tuxedo front patch
which is 8.5cm away from front edge
first pleat is a 0.7cm pleat
with 0.6cm difference between the 6 pleats



5064 Rectangle patch
one patch on each side extends to
the placement between
4th button and 5th button



5061 Square tuxedo patch
one patch on each side extends to
the placement between 4th button and 5th button



5B44 Front split contrast
with the same level as the 1/2 pocket



5Z00 customer appointed fabric of right forpart-



554J left and right piece-



5AW4 Front T-shape patch to the fourth and fifth button not including the front collar button with gripping right placket
5B74 Tuxedo patch use main fabric



5B37 Front waist part split contrast
5B38 Front stick 3.5cmX6 patch patch use main fabric



5D90 Font N-shape patch appointed



5F36 Front align with one circle of right sleeve with ladder shape patch appointed



5F37 Front split break open with upper half appointed
5F38 Front split break open with lower half appointed
5F39 5cm sleeve patch from the outer appointed



5FA0 Front add triangle patch point of the patch press on 5cm below 1/2 part of pocket with 0.1cm top stich



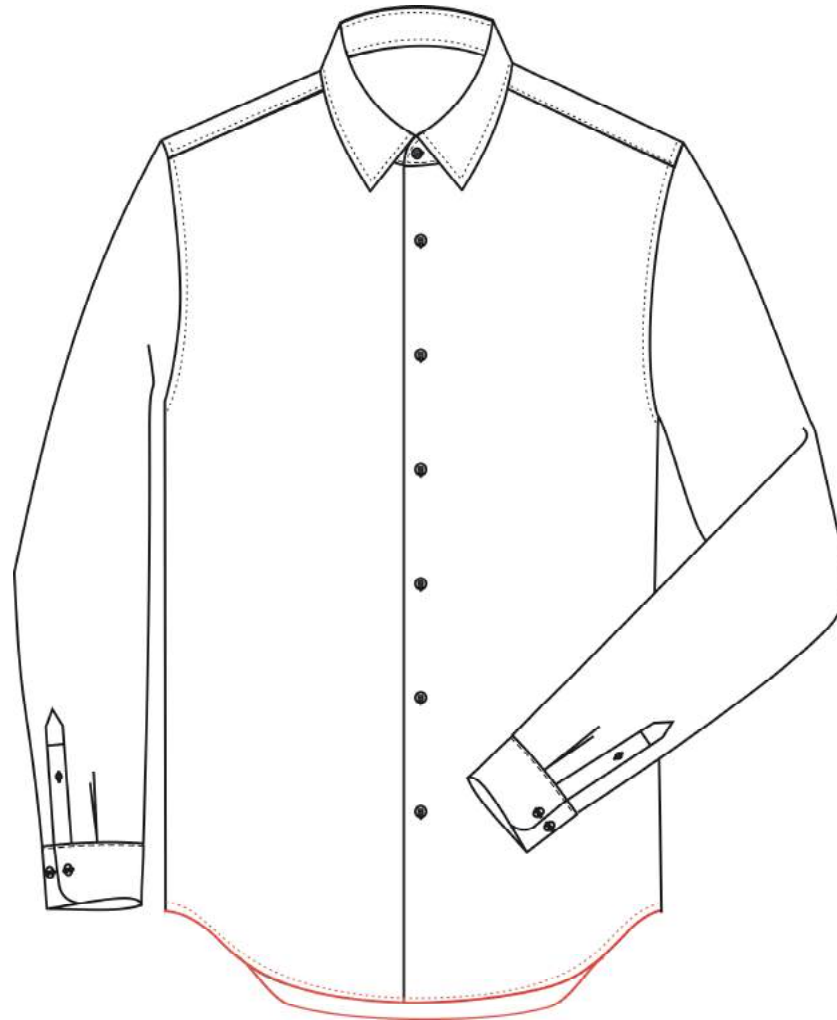
5FA2 Above the left breast pocket add 6 cm wide color cloth
5FA1 Square three-dimensional stick pocket
59Z5 Square flap,no button



5D83 Front V-shape patch appointed

5306 Hexagon pocket Straight pleat with y shape
5370 Vertical buttonhole with button on chest pocket mouth

Bottom





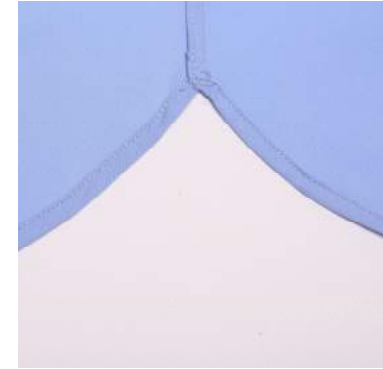
5120 Normal rounded bottom



5130 Normal square bottom



5598 side vents 5cm of straight bottom



5132 Large rounded bottom



5135 Pentagon gusset



5K09 pentagon gusset bottom(hand sewn)

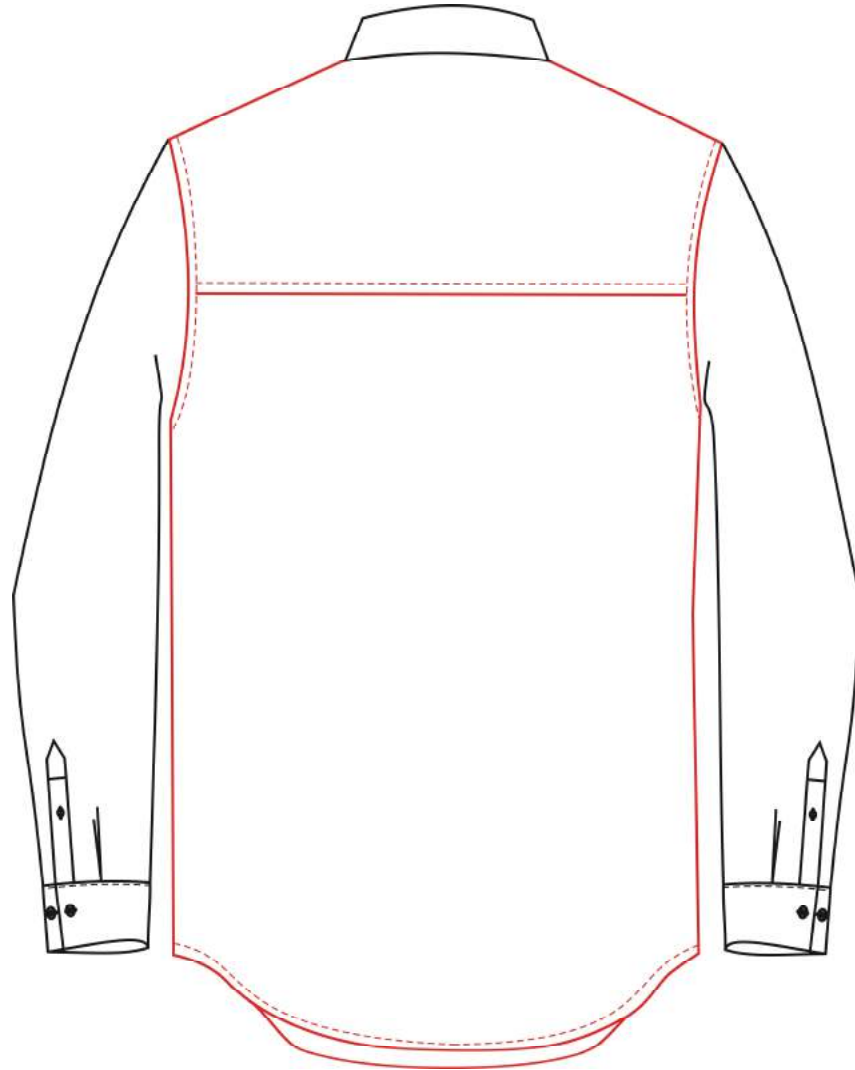


5AW7 Split 28cm to the bottom
on the front and back piece
bottom split contrast appointed



5D56 6cm above sideseam
split on horizontal one circle around bottom

Back





5140 no pleat and no dart



5144 no pleat with double darts



5145 Box pleats to bottom



5143 Box pleats



5141 Side pleats



5142 Inverted box pleat



5149 Triangle yoke



532C 0.6cm piping on back yoke



5543 Back panels(not include Yoke) with specify contrast



554F Trim fabric on outside yoke——