

RED COLLAR  
POLO衫男衬衣款工艺手册

## RCMTM款式设计手册使用说明

- 1、本手册经平台授权业务部门使用;业务部门可根据市场情况有选择的进行市场推广。
- 2、款式设计手册中加注“△”标识的选项为各款式设计大类中(默认)标准配置.
- 3、如果客户不选择款式设计大类中的其它个性化设计选项,即代表客户默认、许可使用(默认)标准配置选项,我们会按照(默认)标准配置来设计制作.
- 4、本款式设计手册中同一类别中的设计选项只能单选,不可复选:客户尤其要避免矛盾或缺乏逻辑的设计,如:既选用“挂边门襟”、又选用“里三折里配色”,既选用“直袖头一眼一扣”、又选用“短袖口外挂边”,既选用“圆袖头一眼一扣”、又选用“法式袖口双折”,既选用“无主标”、又备注主标位置等等.
- 5、客户通过平台下订单时,凡是涉及默认配置的选项不必录入系统,只需录入个性化的款式设计选项。
- 6、本款式工艺手册中的领型款式图和实际领子会有一定差距领型的领尖长,领台高,领豁口,角度等问题都会影响领型。
- 7、客户要求的个性化设计选项只要是本手册里面有定义的,必须录入设计代码;客户的个性化设计如果本手册不能满足的,可向平台提出申请,申请通过平台审核的,将定期归类、定义、汇总、发布设计代码。
- 8、我们会根据市场情况不断补充新研发的设计选项,对已存款式设计选项内容的描述将根据实际情况加以提炼、完善,使之更清晰,定期升级版本。

## 9、本款式设计手册解释权属RCMTM

10、客户已理解以上内容并接受以上要求,方可使用本手册。

## 目录

门襟款式.....1-2

后背形式.....3

过肩形式.....3

下摆形式.....4

下摆明线形式.....4

底摆贴布.....4

领子款式.....5-7

领台形式.....7

领尖长尺寸.....7

袖子形式.....8-11

袖头特殊款.....12-13

口袋款式.....14-15

袋盖款式.....15-16

口袋数量.....16

口袋大小.....16

领子、袖头、门襟配色.....17

短袖款式.....18

短袖口配色款.....18

底领中宽.....19

领豁口.....19

领台高尺寸.....19

领钉扣、插片形式.....19

袖口折形式.....20

袖带位置.....20

袖花形式.....20

领中线形式.....21

侧缝形式.....21

裁剪方向.....21-22

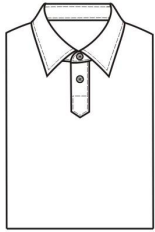
## 目录

肩章形式.....	23
刺绣位置.....	23
配色部位.....	25
标识位置.....	25
后中锁眼形式.....	26
零部件.....	26
锁眼形式.....	26
客户指定线.....	27
客户指定扣.....	28
门襟锁眼.....	29
袖头高度.....	29
明线类型.....	30
衬类型.....	30

刺绣字体.....	31
袖花扣位置.....	31
零部件要求.....	31
尺寸加减.....	32
钉扣形式.....	32

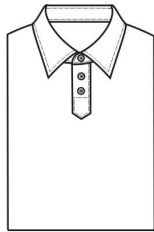


# 门襟款式



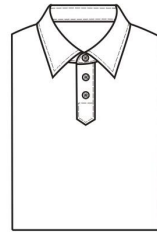
515A

尖角袖叉式套头衫, 钉一粒扣款, 末粒扣距宝剑头8.5cm



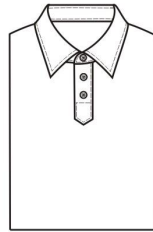
516A

尖角袖叉式套头衫, 钉二粒扣款, 末粒扣距宝剑头8.5cm



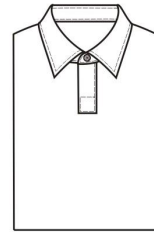
54T5

尖角袖叉式套头衫, 袖叉长21CM, 钉2粒扣款, 末粒扣距宝剑头8.5cm(不含领台扣)



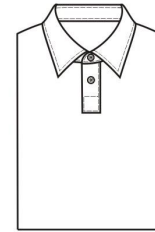
54T5

尖角袖叉式套头衫, 袖叉长21CM, 钉2粒扣款, 末粒扣距宝剑头8.5cm(不含领台扣)



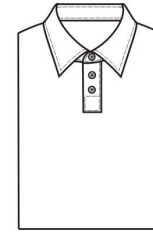
514A

平头袖叉式套头衫, 只有领台锁钉, 锁钉位置按照样板



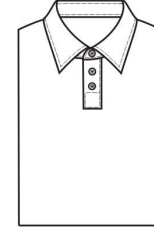
5A92

平头袖叉式套头衫, 钉一粒扣款(不含领台扣)



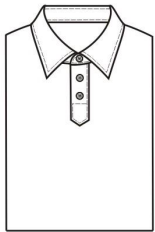
58U9

平头袖叉式套头衫(长度16cm), 钉2粒扣款, 第1粒扣距领缝3cm, 末粒扣距平头6.5cm, 封结2.5cm(不含领台扣)



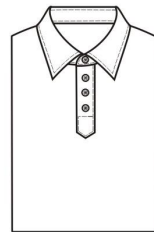
5045

平头袖叉式套头衫, 领台锁钉, 门襟订2粒扣, 末粒扣距平头8.5cm



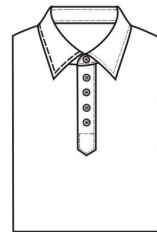
55B7

尖角袖叉式套头衫17cm, 钉2粒扣, 领台扣距第1粒扣6cm, 第1粒扣距第2粒扣5.5cm, 封结3.5cm



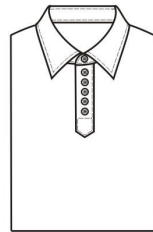
517A

尖角袖叉式套头衫, 钉三粒扣款, 末粒扣距宝剑头8.5cm



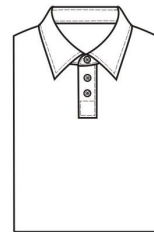
5D52

尖角袖叉式套头衫, 钉四粒扣款, 末粒扣距宝剑头8.5cm



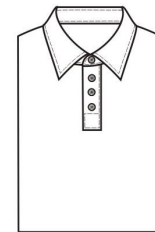
5G07

尖角袖叉式套头衫(长度同两粒扣款), 钉五粒扣款, 门襟第一粒扣距领缝4cm, 末粒扣距宝剑头6cm(不含领台扣)



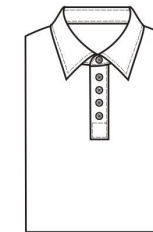
55B6

平头袖叉式套头衫长17cm, 钉2粒扣, 领台扣向下扣距依次为6cm, 封结3cm



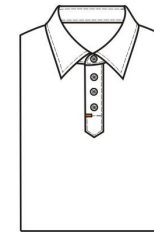
5AB6

平头袖叉式套头衫, 钉三粒扣, 末粒扣距平头8.5cm(不含领台扣)



522A

平头袖叉式套头衫, 钉四粒扣款, 末粒扣距平头8.5cm(不含领台扣)



5333

尖角袖叉式套头衫, 先锁眼后上门襟, 开衩20cm 钉三粒扣, 第一粒扣距领缝4cm, 末粒扣距尖角6cm, 中间等分, 封结4cm(不含领台扣) 大袖叉处手工打结, 结大0.8cm(同袖花打结)

# 门襟款式



518A

暗门襟袖叉式套头衫,  
钉一粒扣款,锁钉位置  
按照样板(不含领台扣)



519A

暗门襟袖叉式套头衫,  
钉二粒扣款,末粒扣距  
宝剑头8.5cm  
(不含领台扣)



520A

暗门襟袖叉式套头衫,  
钉三粒扣款,末粒扣距  
宝剑头8.5cm  
(不含领台扣)



51B1

暗门襟平头叉式套头衫,  
钉三粒扣,第一粒扣距  
领缝3.5cm,向下扣距  
依次6cm(门襟总长  
25CM,不含领台扣)



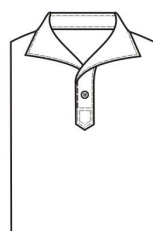
51B1

暗门襟平头叉式套头衫,  
钉四粒扣,第一粒扣距  
领缝3.5cm,向下扣距  
依次6cm(门襟总长31CM,  
不含领台扣)



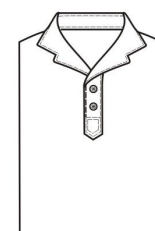
5309

暗门襟尖角袖叉式套头衫,  
先锁眼后上门襟,开衩20cm  
钉三粒扣,第一粒扣距领缝4cm,  
末粒扣距尖角6cm,中间等分,  
封结4cm(不含领台扣)大袖叉处  
手工打结,结大0.8cm(同袖花打结)



54Q9 V字套头衫一片领(领子里和面压弹力衬)

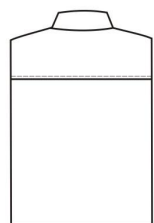
54Q8 V字尖角套头衫一粒扣,  
宝剑头一圈双明线(0.1+0.6),  
尖角向上10cm锁眼,距门襟外口2cm



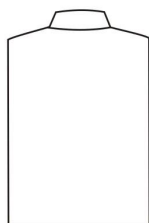
55K2 V字套头衫一片八字领(领子里和面压弹力衬)

55K3 V字尖角套头衫两粒扣,  
宝剑头一圈双明线(0.1+0.6),  
锁眼位置按照样板

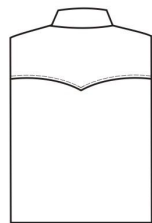
## 过肩形式



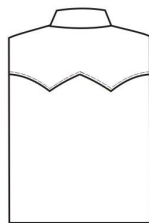
5170  
正常过肩



54S1 后背无过肩,前肩缝来去缝  
压0.5cm明线  
55Y1 前片专用(后片只做54S1)

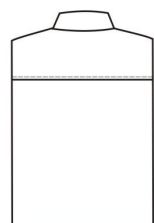


5149  
过肩面三角形

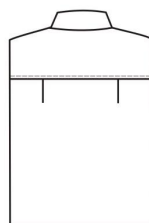


5782  
过肩面双三角形

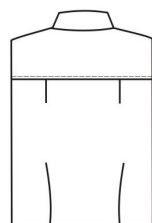
## 后背形式



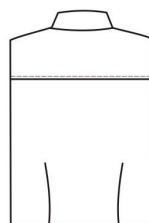
5140  
后背无折



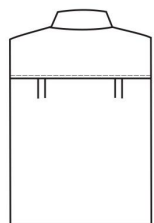
5141  
后背双折



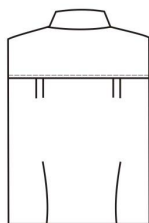
5152  
后背双折加双省



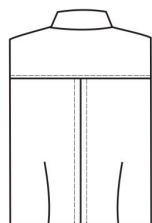
S-5144  
后背双省



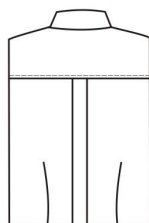
5148  
后背四折



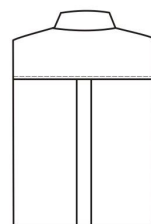
5B40  
后背四折加双省



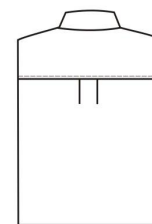
5566  
后背反工字折到底  
左右1cm明线加双省



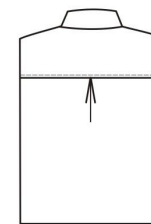
5146  
后背工字折抬到底  
加双省(工字折缝死)



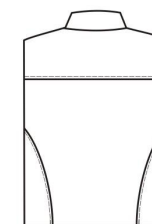
5145  
后背工字折到底



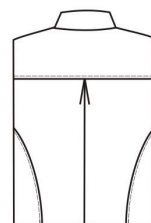
5143  
后背工字折



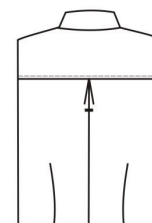
5142  
后背反工字折



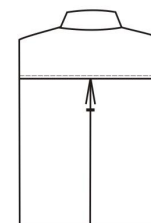
5586  
后背三片拼接



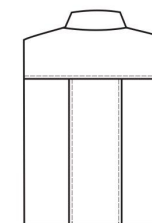
5587  
后背三片拼接  
加反工字折到底



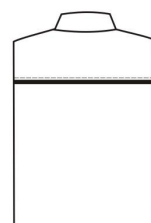
5153  
后背反工字折到底  
加双省



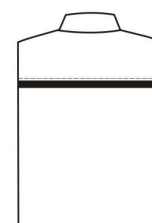
5150  
后背反工字折到底  
上下打结



5669  
后片破开拼接  
压0.3cm明线



5147  
后背无折夹0.3cm  
沿条(斜裁,沿条毛宽  
2.6CM)

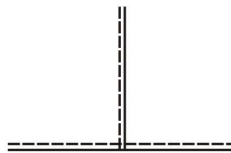


532C  
后片过肩处加  
沿条斜裁外漏  
0.6cm(沿条毛宽  
3.2CM)-

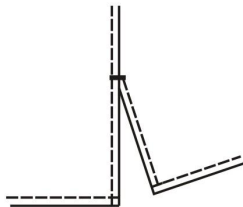
## 下摆形式



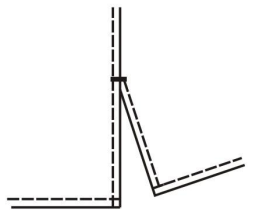
△5120  
普通圆摆



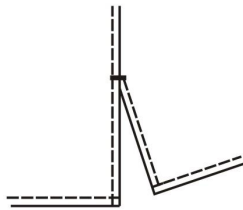
5130  
普通直摆(不开叉)



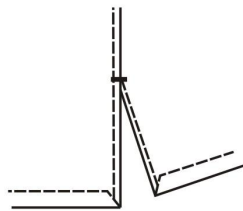
5131  
直摆侧开叉9.0cm



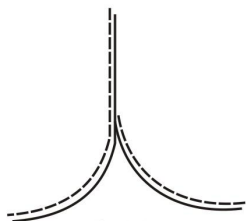
5388  
直摆侧开叉15cm



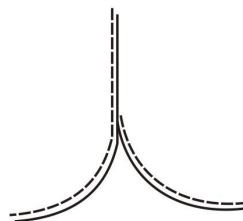
5598  
直摆侧开叉5cm



5334  
直摆侧开叉9.0cm,下摆带折角,明线宽2.6cm



5132  
BY圆摆



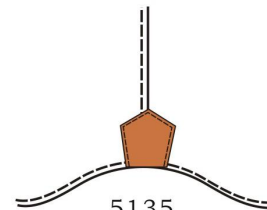
51B3  
BT圆摆



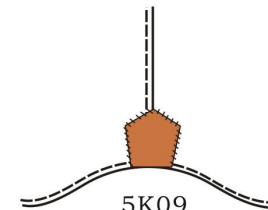
56E1  
底边四线机0.5双线压底边  
宽度1.5cm(仅限针织面料)

## 下摆明线形式

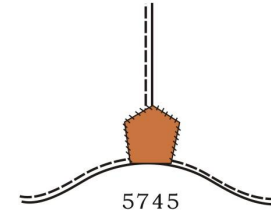
## 底摆贴布



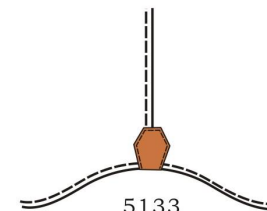
5135  
底摆钉五角贴布



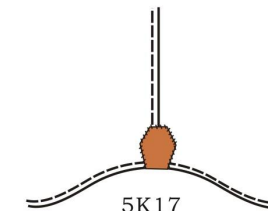
5K09  
底摆五角贴布



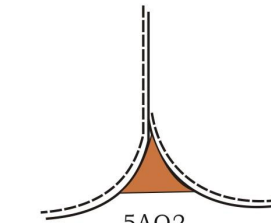
5745  
底摆钉五角贴布  
反面卷入底摆



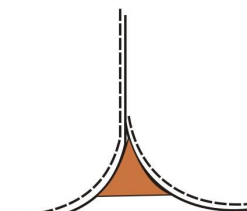
5133  
底摆钉六角贴布



5K17  
凯妙底摆六角贴布

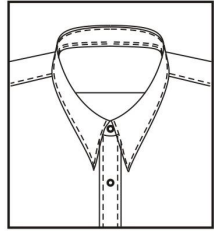


5AQ2  
下摆包卷边式  
三角贴布

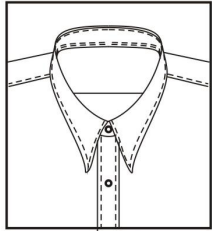


5134  
底摆钉三角贴布

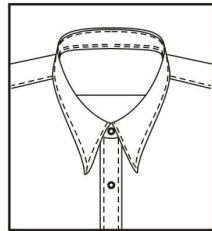
# 领型



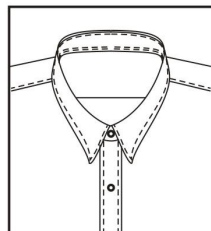
5L26  
尖领A



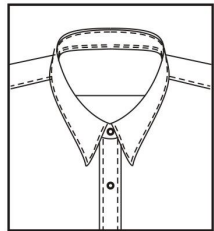
5L28  
尖领C



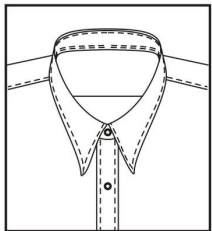
5L29  
尖领D



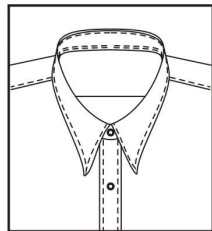
5AK7  
小尖领D



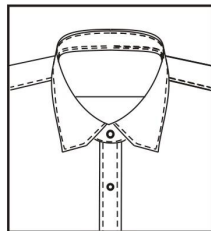
5AK8  
中尖领D



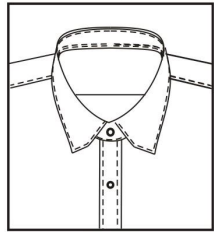
5AK9  
大尖领D



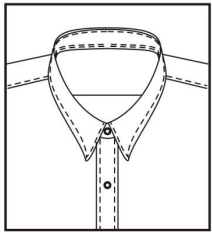
5L30  
尖领E



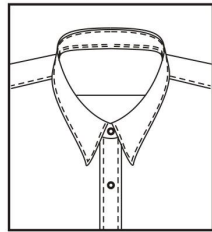
5L50  
六角E



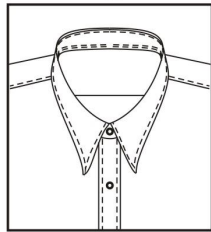
5L49  
六角C



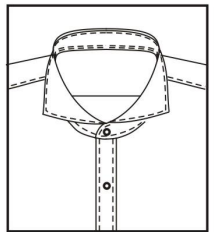
5AL1  
小尖领E



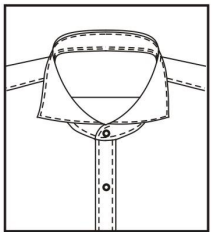
5AL2  
中尖领E



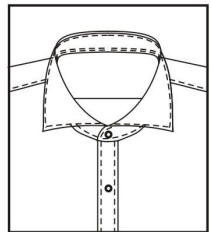
5AL3  
大尖领E



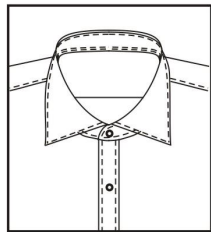
5AM1  
小八字领N



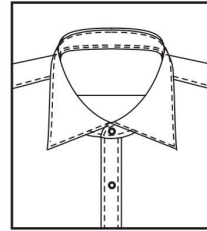
5AM2  
中八字领N



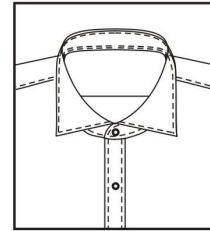
5AM3  
大八字领N



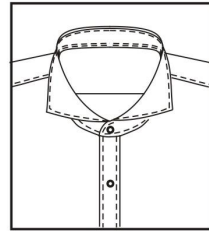
5AL8  
中八字领H



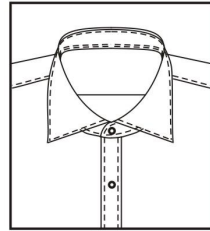
5AL9  
大八字领H



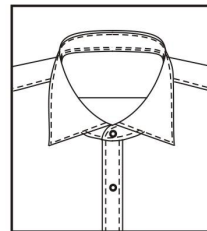
5AL7  
小八字领H



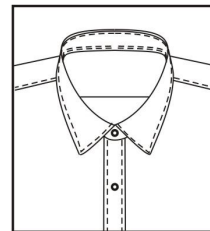
5L38  
八字领N



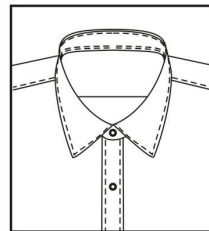
5L33  
八字领H



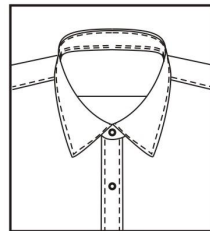
5L36  
八字领L



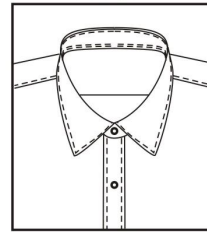
5AL4  
小方领G



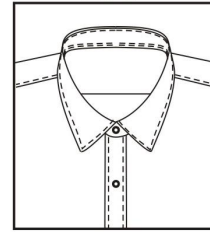
△5AL5  
中方领G



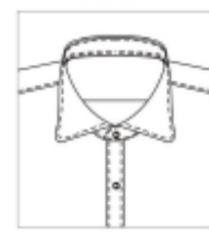
5AL6  
大方领G



5L32  
方领G



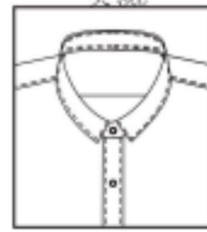
5I15  
研发2#领



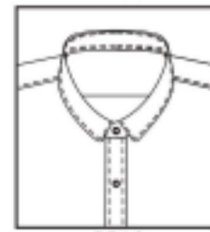
5L54  
小圆领E



5L42  
弧形领G



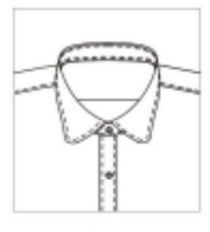
5I02  
RP-LZ-1#



5I13  
RP-LZ-1#圆领



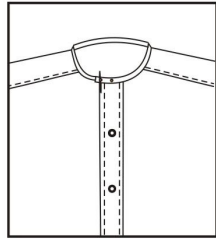
5230  
中弧形领 编号42号领



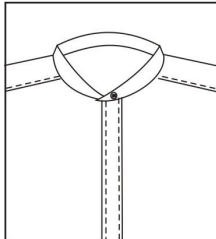
5240  
小圆领 编号40号领



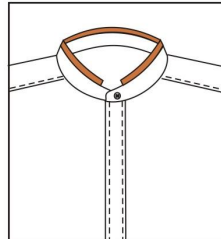
# 领型



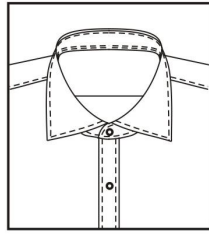
5357  
50号立领,出台3cm,  
距出台1cm处锁眼钉扣



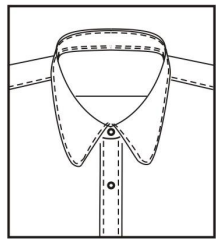
5FA3  
51号立领  
(无底领宽明线)



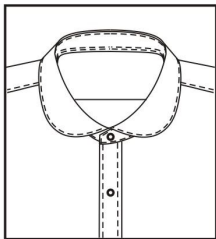
5358  
59立领,上1cm配色-



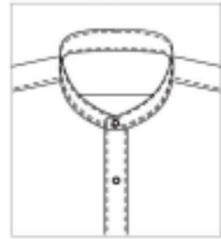
5L34  
八字领J



5L44  
圆领C

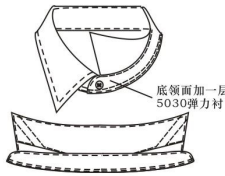


5L80  
圆领A



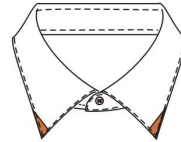
5250  
立领 编号56号领

## 领子做法

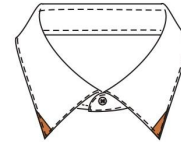


5K07  
反夹领(注:底领面加  
一层5030弹力衬)

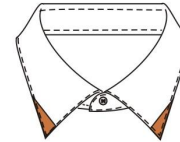
# 领子特殊款



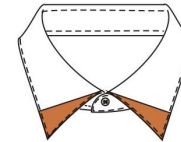
54H7  
男衬衣领子C1做法,领  
尖三角拼接不配色



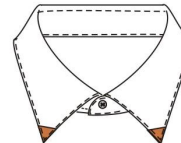
53C4  
男衬衣领子C1做法,  
领尖三角拼接配色-



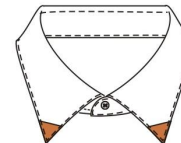
5E07  
领子面贴三角贴布配色-



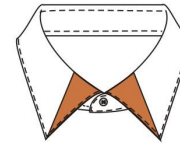
5667  
领子贴三角贴布,  
贴布从领尖进3cm  
到领尖三角贴布  
配色料-



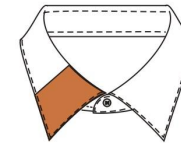
5AX8  
领尖距两边各1.5cm  
的三角贴布,三角贴布  
配色料-



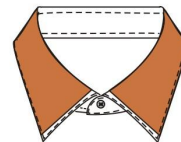
51E9  
领尖距两边各3.5cm  
的三角贴布,三角贴布  
配色料-



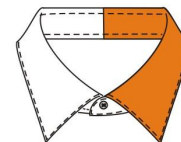
5AX9  
领子贴大三角贴布,  
贴布从领跟进2.5cm  
到领尖三角贴布配色料-



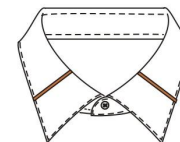
5AH3  
右领从领跟到6CM  
处贴四角贴布-



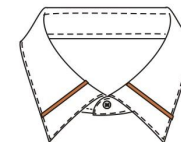
5C49  
领子B3做法 除上领面  
1cm大身面料沿条外,  
其余部分配色-



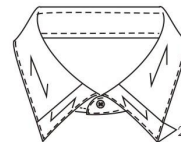
55Z6  
领子后领中1/2处拼接  
配色,左片领面用指定  
料(包含上领面和底领面)-



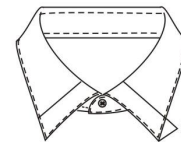
5AX7  
领子距领尖4cm处  
加装饰条,装饰条  
配色料-



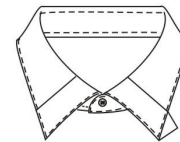
5AX6  
领子距领尖2cm处  
加装饰条,装饰条  
配色料-



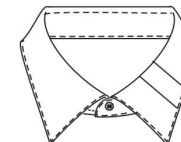
5B05  
领尖2cm位置  
破开纬向裁剪



5B07  
领尖2.5cm处拼  
接配色-

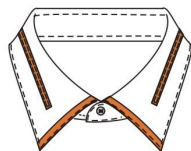


5B06  
领尖3.5cm处拼  
接配色-

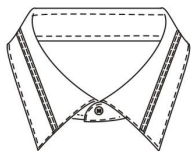


53G5  
领子H1做法 距左侧  
短边2.5cm向里贴  
专用织带-

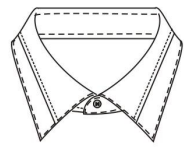
## 领子特殊款



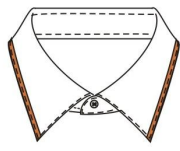
5386  
领子E1做法 领子贴1根宽0.6cm横向沿条两侧各压0.15cm明线(距两侧领边各3cm),沿条毛宽1.6cm(直丝)配色-



5A05  
领子加装饰条,装饰条直裁毛宽1.6CM,宽0.6cm两侧压0.1cm明线



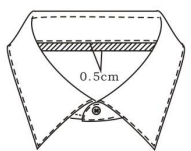
51A8  
领面居中捏1cm横折,先捏折后压衬,折倒向领尖



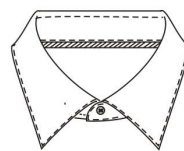
547B  
领子N做法 领外口包1cm沿条,沿条(斜裁,毛宽4cm)客户指定(领子明线0.15)-



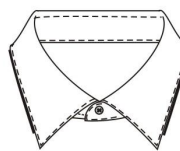
59D9  
领子短边包0.4cm(沿条毛宽2.0CM)配色沿条斜裁-



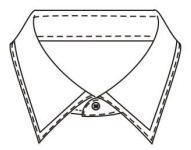
548N  
领子A6做法 底领平领时夹0.5cm沿条,沿条客户指定料(沿条45度斜裁,毛宽2.2CM)-



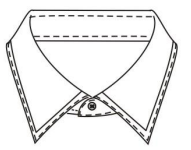
5856  
底领平领时夹0.3cm沿条(沿条毛宽2.0CM),沿条客户指定料(沿条45度斜裁)-



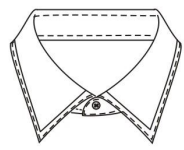
56J5  
领子外沿距领尖2cm开始夹0.3cm配色沿条(沿条斜裁,沿条毛宽2.6CM)-



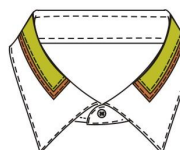
5514  
领子J做法 上领面包0.6cm边,短边压长边,包边(斜裁,毛宽3.5)



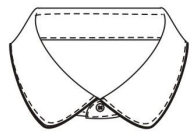
5933  
领子M1做法 领子三边全加1cm沿条(沿条毛宽3.2CM),沿条短边压长边(沿条(斜裁)不配色)



51E1  
领子M2做法 领子三边全加1.5cm沿条(沿条不配色短边压长边),上领面配色-



5892 上领面贴两片小领子,领子1部位配色料-  
5893 上领面贴两片小领子,领子2部位配色料-

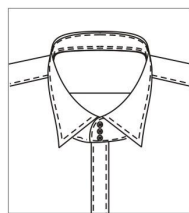


54H8  
领子外沿一圈夹0.2cm的沿条不配色,加棉绳

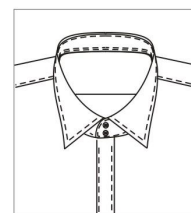


5365  
领子外沿一圈夹0.2cm的配色沿条,加棉绳-

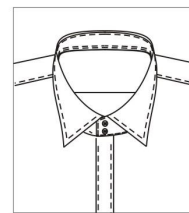
## 领台形式



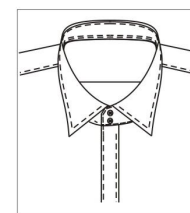
S-5273  
圆领台三粒扣



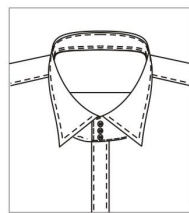
S-5271  
圆领台两粒扣



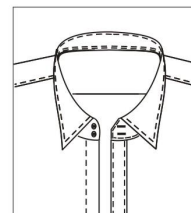
S-5275  
方领台两粒扣



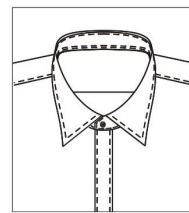
5279  
方切角领台二粒扣



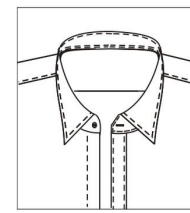
S-5276  
方领台三粒扣



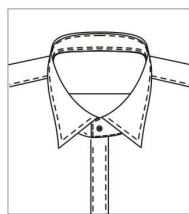
S-5278  
领台左方右圆两粒扣



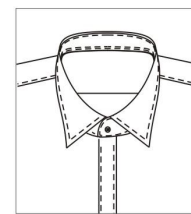
S-5277  
方切角领台一粒扣



S-527A  
领台左方右圆一粒扣



5274  
方领台一粒扣

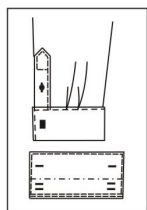


5270  
圆领台一粒扣

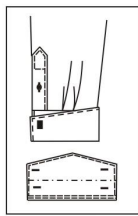
9B22 领尖长4cm  
9A63 领尖长5.2cm  
9B12 领尖长5.6cm  
9A01 领尖长6.4cm  
9A02 领尖长7.1cm  
9A03 领尖长7.6cm  
9A52 领尖长8.2cm  
9A53 领尖长8.8cm  
9A55 领尖长10cm  
9B15 领尖长11.2cm

## 领尖长尺寸

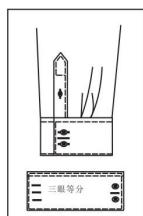
# 袖子形式



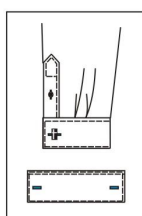
5467  
法式直袖头  
六眼（小袖  
花内握）



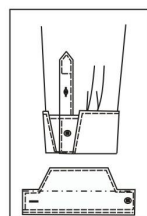
5454  
法式三角袖头  
四眼（小袖花  
内握）



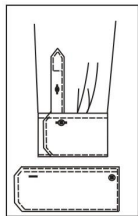
S-545N  
直袖头四眼两  
扣



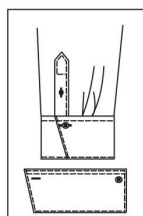
S-5406  
法式单直袖头  
两眼



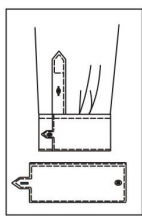
545P  
法式单梯形袖  
头一眼一扣



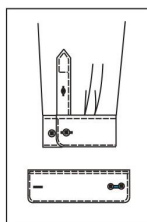
5417  
单面八角袖头  
一眼一扣



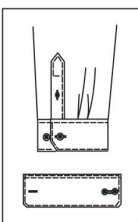
S-5418  
单面斜袖头一眼  
一扣



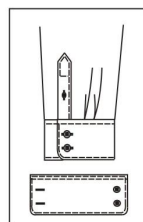
S-545T  
直角袖头带袖  
拌一眼一扣



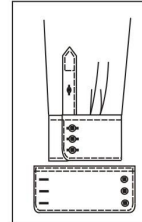
5783  
圆袖头二眼二  
扣（小袖花不  
内握）小袖花  
锁眼一侧钉二扣



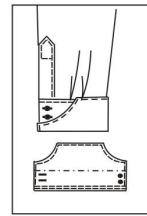
5786  
六角袖头二眼  
二扣（小袖花  
不内握）小袖花  
锁眼一侧钉二扣



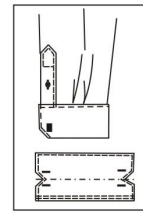
S-5412  
圆袖头两眼两扣



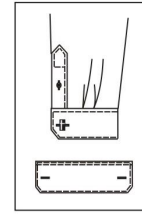
5413  
圆袖头三眼三扣



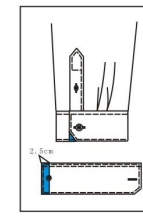
53A2  
法式倒弧形袖  
头二眼二扣



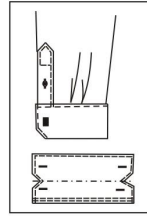
58A0  
法式双六角袖  
头四眼，翻折  
后1/3处锁眼



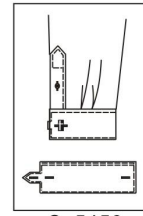
S-5408  
法式单六角袖头  
两眼



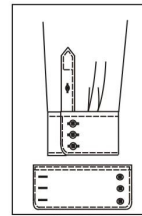
5570  
单面六角袖头  
小袖花一侧4cm  
拼接配色



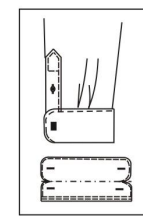
5459  
法式双六角袖头  
四眼（袖头明线  
0.15cm，小袖花  
内握）



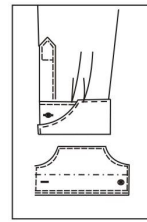
S-5450  
法式直角袖头  
带袖拌三眼小  
袖花内握



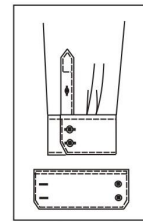
S-5416  
小圆袖头三眼  
三扣



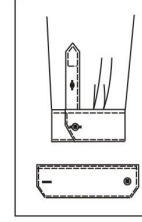
545T  
法式三圆袖头



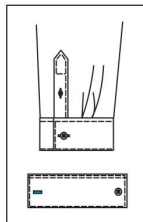
53A1  
法式倒弧形袖  
头一眼一扣



S-5432  
六角袖头两眼  
两扣



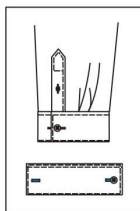
S-5434  
大六角袖头一眼  
一扣



S-5400  
直袖头一眼一扣

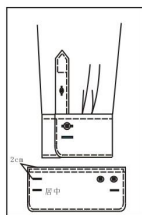


# 袖子形式



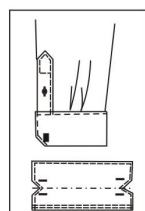
S-5404

直袖头两眼一扣  
扣子钉在小袖花  
反面



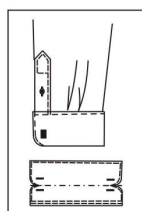
S-5436

法式单圆袖头三眼  
两扣袖头锁大眼,小  
袖花内握



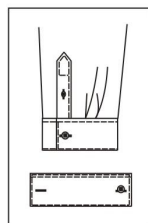
545E

法式双六角袖  
头四眼,翻折  
后1/3处锁眼



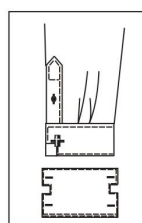
545F

法式双圆袖头四眼,  
翻折后1/3处锁眼



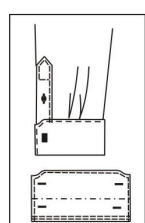
S-5405

直袖头两眼一扣  
扣子钉在小袖花  
正面



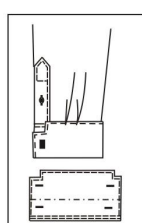
S-5428

法式单面方切角  
袖头



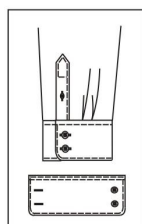
5458

法式小弧形袖头  
四眼(小袖花内  
握)



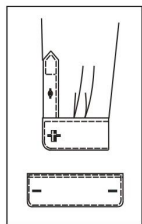
545R

法式方切角袖头



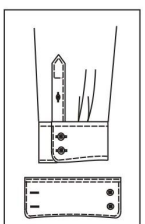
S-5415

小圆袖头两眼  
两扣



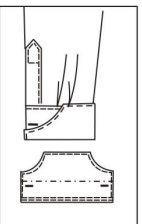
S-5409

法式单圆袖头  
两眼



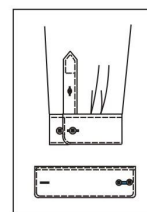
S-545J

26号袖头两眼  
两扣



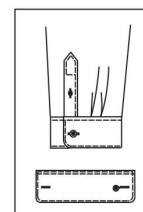
53A4

法式倒弧形袖  
头两眼



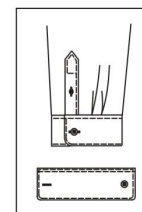
5784

小圆袖头两眼两  
扣(小袖花不内握  
)小袖花锁眼一  
侧钉二扣



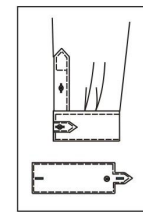
S-54B6

圆袖头两眼一扣,  
扣子钉在袖头里,  
小瓣长0.8cm



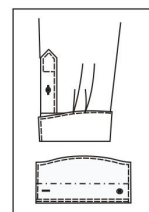
S-5420

大圆袖头一眼  
一扣



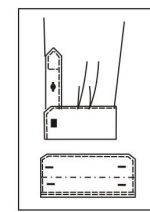
S-5442

直角袖头带拌鼻两  
眼一扣(小拌在小袖  
花一侧)扣在在袖头  
反面,小袖花内握



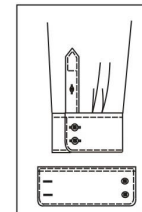
5426

法式大弧形袖头  
一眼一扣(扣子  
钉在袖头面,小  
袖花内握)



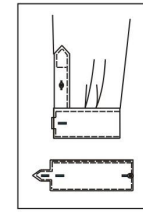
5452

法式六角袖头  
四眼(小袖花  
内握)



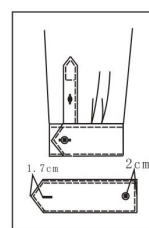
S-5422

大圆袖头两眼  
两扣



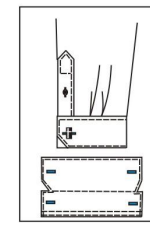
S-543A

法式直袖头带袖拌3眼1扣  
小袖花内握,袖拌在大袖花  
一侧,扣子钉在小袖花正  
面,靠近外侧



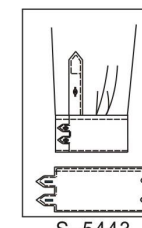
S-5440

尖角袖头一眼一扣



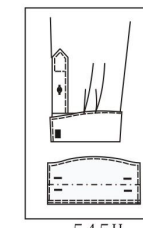
S-5427

法式单面斜切角袖头  
小袖花内握,按照样板



S-5443

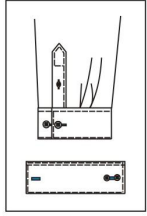
直角袖头带双袖拌  
两眼两扣



545H

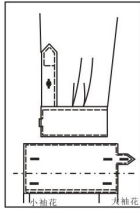
法式半圆袖头四眼,  
翻折后1/3处锁眼

# 袖子形式



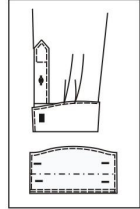
5787

直袖头二眼二扣  
(小袖花不内握)  
小袖花锁眼一侧钉  
二扣



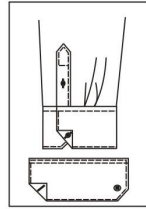
S-545A

法式直角带拌鼻袖  
头五眼小袖花内握  
(袖头明线0.15cm)



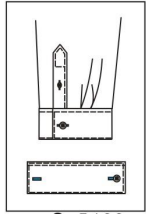
5407

法式半圆袖头四眼  
(小袖花内握)



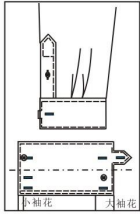
S-5419

六角加折叠袖头一眼一扣  
折叠在大袖花一侧,六角在  
小袖花一侧,锁钉按照样板



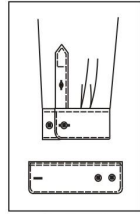
S-5429

Convertible 法式直  
袖头两眼一扣(扣  
子钉正面)



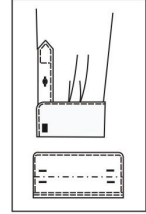
S-545W

法式直袖头带袖拌  
6眼2扣小袖花内握



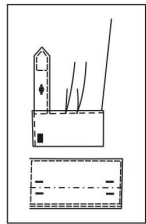
S-5421

大圆袖头一眼两  
扣



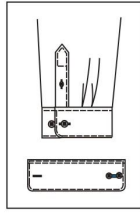
545G

法式圆袖头四眼,  
翻折后1/3处锁眼



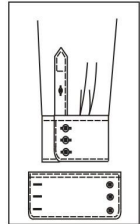
545D

法式直袖头四眼,  
翻折后1/3处锁眼  
(小袖花内握)



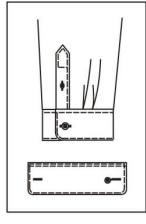
5785

大圆袖头二眼二扣  
(小袖花不内握)小  
袖花锁眼一侧钉二  
扣



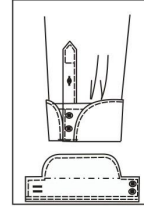
S-5423

大圆袖头三眼三扣



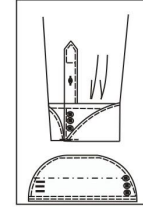
S-545M

圆袖头两眼一扣,扣  
子钉在袖头里小瓣长  
1.5cm



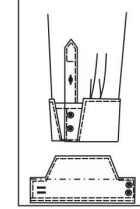
545C

法式单圆袖头  
二眼二扣(小  
袖花不内握)



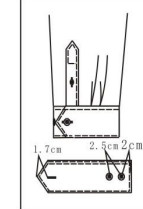
546Z

法式半圆袖头  
三眼三扣(小  
袖花不内握)



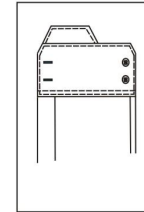
5453

法式单梯形袖头  
二眼二扣(小袖  
花不内握)



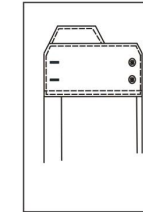
S-5441

尖角袖头一眼两扣



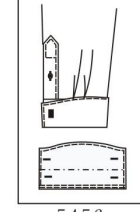
5029

六角袖头2眼2扣  
加外翻边,压  
0.15明线



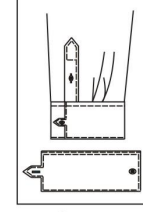
545X

六角袖头2眼2扣  
加外翻边,外翻  
部位配色



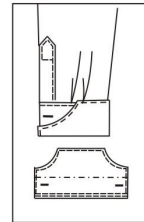
5456

法式大弧形袖头  
四眼



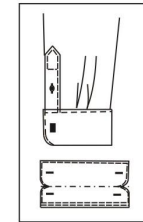
S-545I

直角袖头带袖拌  
一眼一扣



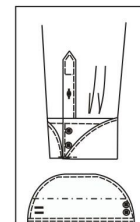
53A3

法式倒弧形袖头  
二眼(中间锁眼  
,小袖花内握)



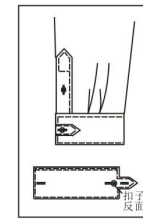
5457

法式双圆袖头四眼  
(袖头明线0.15cm,  
小袖花内握)



545B

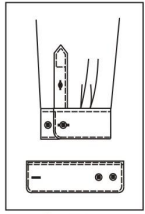
法式半圆袖头  
二眼二扣(小袖  
花不内握)



S-545Y

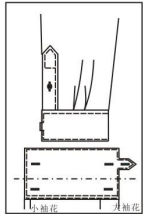
直袖头带袖拌(7)  
3眼1扣(袖拌在小  
袖花一侧)小袖花  
内握

# 袖子形式



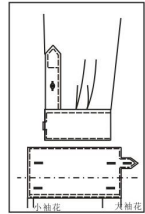
S-5411

圆袖头一眼两扣



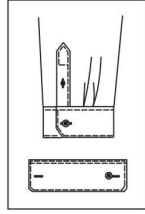
59B0

法式直角带拌鼻袖头五眼小袖花内握(袖头明线0.3cm)



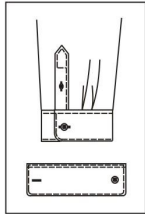
59A0

法式直角带祥鼻袖头五眼(袖头明线0.6cm)



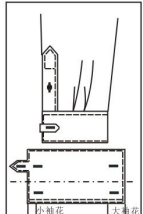
S-540B

六角袖头两眼一扣(同CC1)扣子钉在小袖花一侧反面



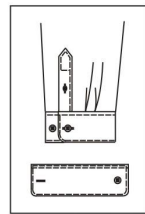
S-5414

小圆袖头一眼一扣



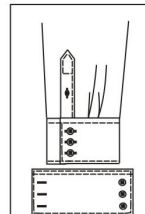
S-545L

24#法式直袖头带袖拌,袖拌在小袖花一面小袖花内握



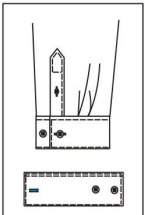
△5410

圆袖头一眼一扣



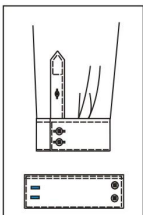
5403

直袖头三眼三扣



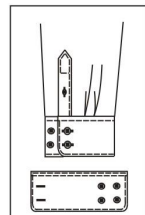
5401

直袖头一眼二扣



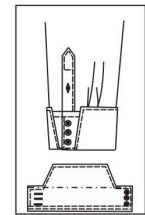
5401

直袖头一眼二扣



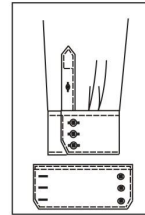
542S

圆袖头两眼四扣



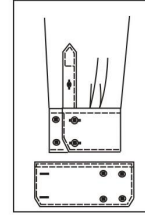
545K

法式单梯形袖头三眼三扣



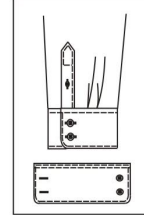
5433

六角袖头三眼三扣



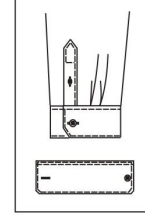
5A77

六角袖头二眼四扣



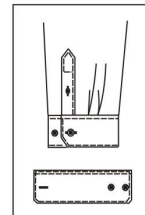
5422

大圆袖头二眼二扣



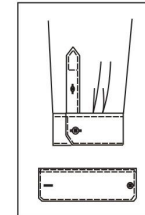
5390

小六角袖头一眼二扣



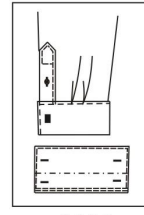
5431

六角袖头一眼二扣



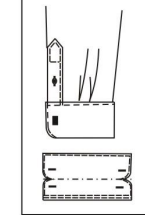
5430

六角袖头一眼一扣



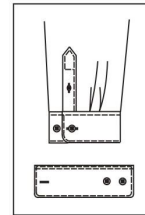
5455

法式直袖头四眼(小袖花内握)



5578

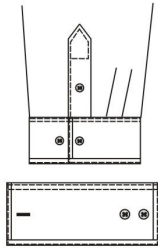
法式双圆袖头四眼,翻折后1/3处锁眼,袖头里粘衬



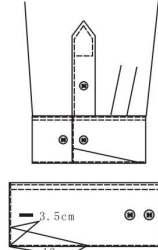
55W6

小圆袖头一眼二扣

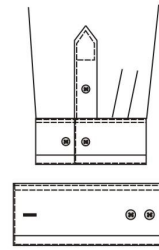
# 袖头特殊款



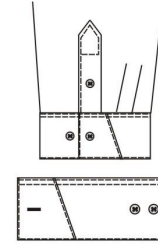
547Q 袖头V做法 袖头三边贴1cm配色条-



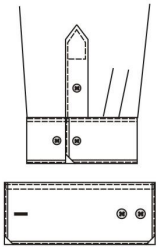
547P 袖头U做法 袖头面斜拼接1款



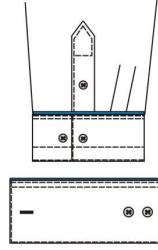
547H 袖头Q做法 袖头面2cm拼接-



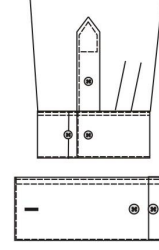
547G 袖头P做法 袖头贴四角贴布配色-



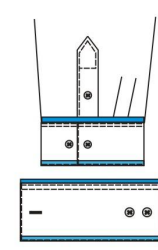
501C 袖头C做法 袖头包边带角袖头面包0.4cm的配色边,包边45°斜裁,明线0.15cm,只做直袖头



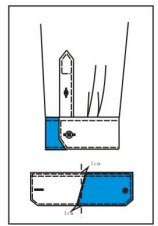
547S 袖头X做法 袖头夹0.3沿条-



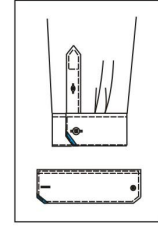
547M 袖头S做法 小袖花一面袖头用大身料2.5cm配色



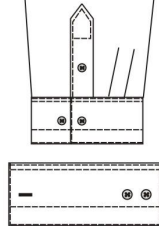
5922 袖头外口包0.5cm沿条、上袖头时夹0.5cm沿条(袖头明线0.15)沿条客户指定



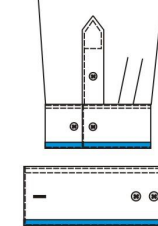
5569 袖头1/2斜角贴布配色



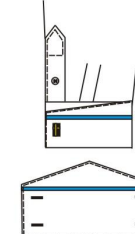
5568 六角袖头六角边包1cm配色-



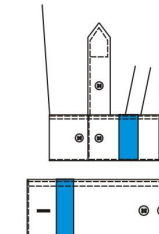
547N 袖头T做法 袖头面压一道3cm明线



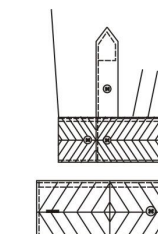
547D 袖头M做法 袖头外口加1cm沿条配色-



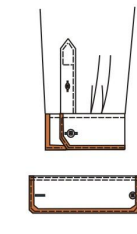
501G 袖头G做法 袖头贴一根横向沿条-



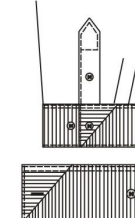
501F 袖头F做法 袖头贴2.5cm的配色贴布-



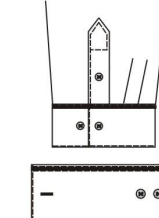
501B 袖头B做法 袖头十字拼接



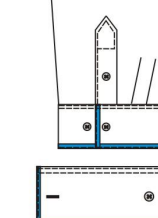
53H3 袖头C1做法 六角袖头包1cm边带角,包边面料



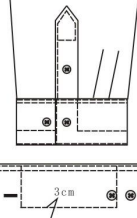
501A 袖头A做法 袖头斜角拼接



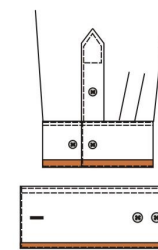
547F 袖头O做法 袖头宽明线处加0.8cm配色沿条-



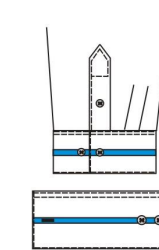
501J 袖头J做法 袖头包0.6cm边加配色沿条-



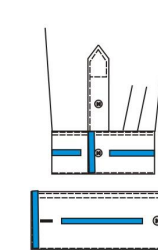
5B11 袖头压双明线,第一道距袖头边0.6cm 第二道距袖头边3cm



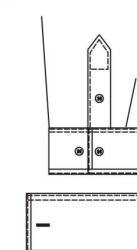
55H4 袖头外口包0.6cm配色沿条毛宽4cm(斜裁)-



5E08 袖头n1做法 袖头中间贴1.2cm沿条(沿条宽3cm)

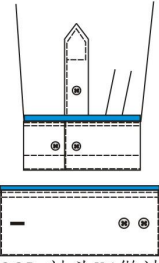


55D1 袖头面居中贴0.6cm配色沿条距两短边各5cm,袖头两短边给包0.6cm沿条-

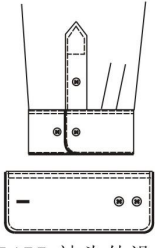


5515 袖头j做法 袖头三边包0.6CM沿条(袖头明线0.15)

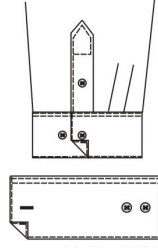
# 袖头特殊款



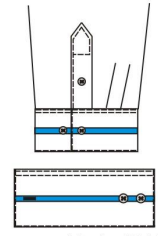
532D 袖头X1做法  
袖头夹0.6沿条-



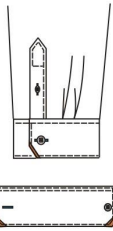
547Z 袖头外沿一圈  
夹0.3cm的配色沿条-



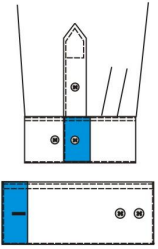
547L 袖头R做法  
大袖花一面袖头折角封结



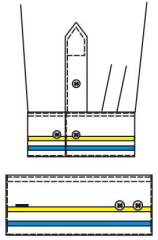
547E 袖头N做法  
袖头中间加1.2cm配色沿条-



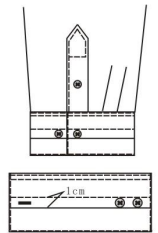
59D8  
六角袖头六角边  
包0.4cm斜裁配色-



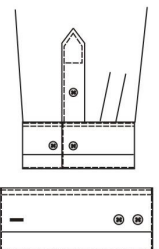
564G 袖头2.5cm  
处拼接配色-



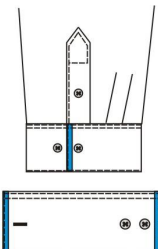
501H 袖头H做法  
袖头贴2根横向沿条-



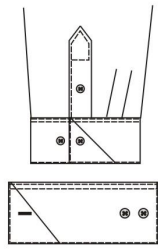
547V 袖头A1做法  
袖头面居中捏1cm横折，扣眼锁在折中间



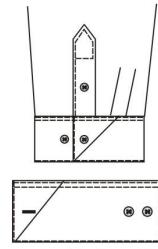
547T 袖头Y做法  
袖头向上4cm破开拼接2款纬向裁剪



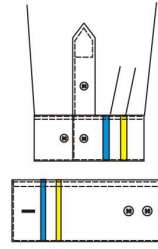
547Y 袖头两个短  
边加沿条-



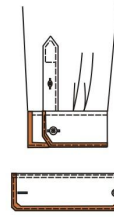
547U 袖头Z做法  
袖头破开拼接3款



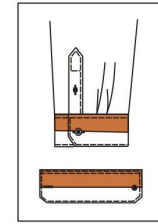
547W 袖头B1做法  
袖头拼接4款



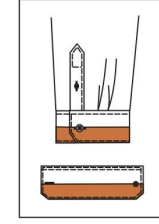
501I 袖头I做法  
袖头贴2根竖向沿条-



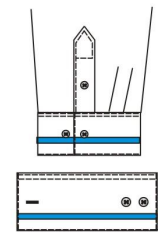
5C99  
袖头C1做法 六角  
袖头包0.4cm边带角



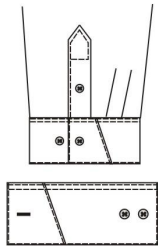
5B23  
袖头高1/2  
上部分配色-



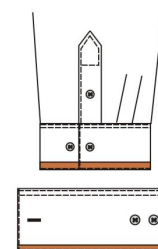
5B24  
袖头高1/2  
下部分配色-



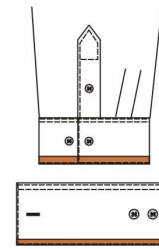
5874 距袖头外口2cm贴  
0.6cm配色沿条，沿条毛  
宽1.6cm(直丝)客户指定-



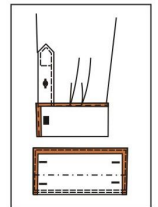
5C79 袖头p1做法  
袖头贴四角贴布



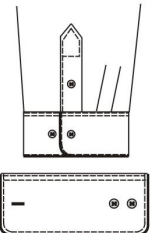
5932 袖头M1做法  
袖头外口包1cm沿条



564M 袖头面下口  
包1.5cm的沿条，  
沿条毛宽3.5cm-



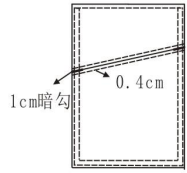
5056  
法式直袖头三边包边  
0.4cm，包边毛宽3cm  
斜裁，长边压短边-



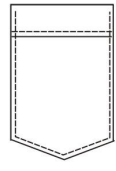
54H9 袖头外沿一圈  
夹0.2cm的沿条不配  
色，沿条毛宽3cm斜  
裁，加棉绳



# 口袋款式



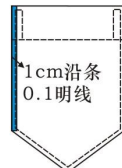
S-5319  
方口袋破开款



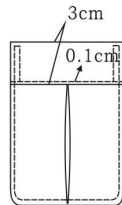
5301  
三角口袋假翻边



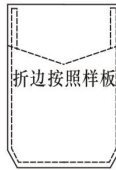
S-5302  
三角口袋三角折边



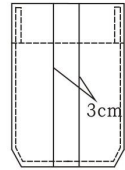
S-536D  
口袋右侧加1cm沿条(穿后)



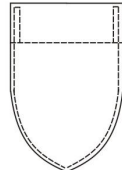
S-5316  
夹边圆口袋反工字折



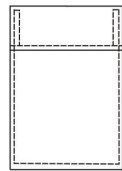
S-5310  
六角口袋三角折边



S-5306  
六角口袋直折边工字折



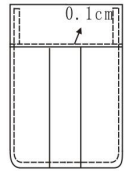
S-5317  
桃型口袋



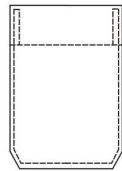
S-5344  
方口袋假翻边



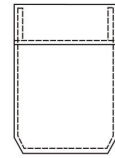
S-5304  
方口袋加祥鼻



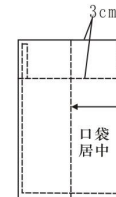
S-5315  
夹边圆口袋工字折



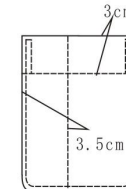
S-5312  
六角口袋直折边



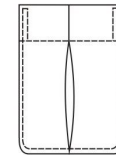
S-5311  
六角口袋假翻边



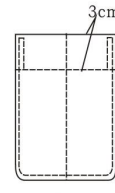
S-536H  
方口袋眼镜袋



S-5337  
圆口袋加笔袋



5326  
圆口袋反工字折



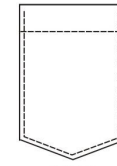
S-536B  
眼镜袋圆口袋



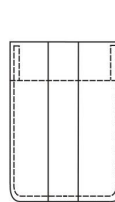
S-5320  
单开线口袋暗袋



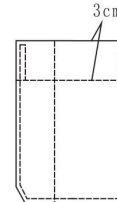
S-5318  
单开线口袋暗袋  
左1cm,右1.3cm



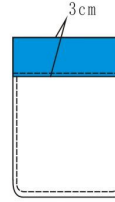
5300  
三角口袋直折边



5329  
工字折圆口袋



537T  
六角口袋加笔袋

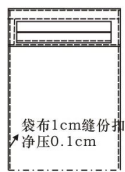


5AN7  
夹边圆口袋,夹边  
配色客户指定料-

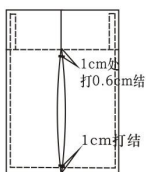


5948  
三角口袋三角折边,  
三角封口

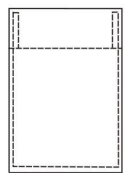
# 口袋款式



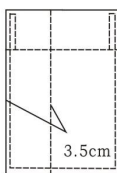
S-5321  
双开线口袋暗袋



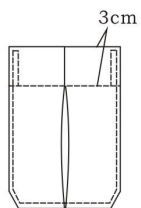
S-536F  
方口袋反工字折直折边



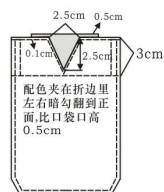
S-5340  
方口袋直折边



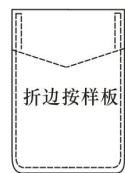
S-536G  
方口袋插笔袋



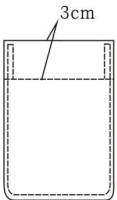
S-536A  
六角口袋直折反边工字折



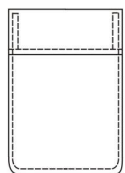
S-537R  
六角口袋直折边口袋  
双层,内层配色



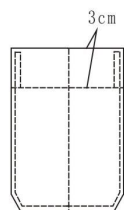
S-5325  
圆口袋三角折边



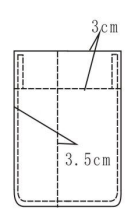
S-5323  
圆口袋直折边



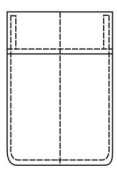
S-5324  
圆口袋假翻边



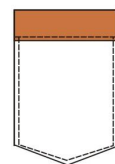
S-537U  
六角口袋眼镜袋



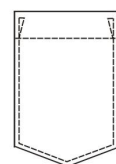
S-5328  
圆口袋加笔袋



S-537W  
圆口袋假翻边  
加眼镜袋



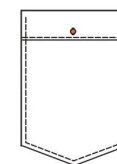
S-5732  
夹边三角口袋,  
夹边配色料-



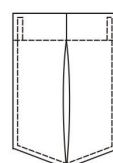
S-5857  
三角口袋直折  
边三角封结



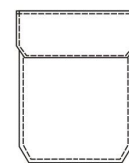
S-5G20  
三角口袋直折边  
插笔袋口袋



S-5G44  
三角口袋外翻边  
(居中锁竖眼钉扣,  
不锁透)

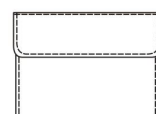


S-56A5  
反工字折三角口袋  
直折边

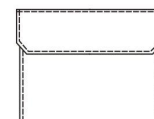


S-56E3  
六角口袋工字折直折边  
加六角袋盖,袋盖不锁钉

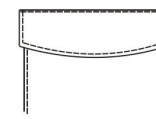
# 袋盖款式



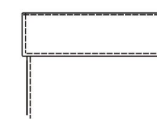
S-59Z3  
加圆袋盖 无锁定



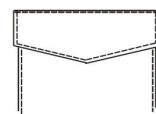
S-59Z1  
加六角袋盖 无锁定



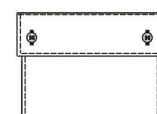
S-59Z2  
加半圆袋盖 无锁定



S-59Z5  
加方袋盖 无锁定

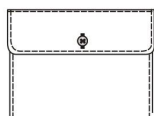


S-59Z4  
加三角袋盖 无锁定

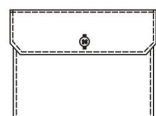


S-55Z8  
加方袋盖,袋盖短边与下口  
各距边1.5cm左右各钉一  
粒扣(口袋折边2cm)

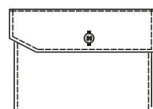
## 袋盖款式



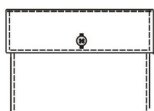
5374  
加圆袋盖一粒扣



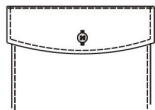
5372  
加六角袋盖一粒扣



5377  
加斜角袋盖



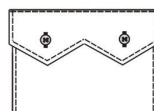
5376  
加方袋盖一粒扣



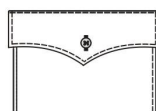
5373  
加半圆袋盖一粒扣



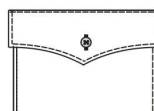
5375  
加三角袋盖一粒扣



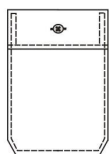
5378  
双三角袋盖两粒扣



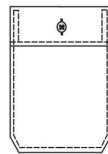
5379  
弧形尖角袋盖一粒扣



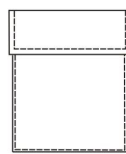
5381  
小弧形尖角袋盖,  
袋口锁竖眼钉扣



5371  
袋口锁横眼钉扣



5370  
袋口锁竖眼钉扣



537S  
袋盖不锁钉

## 口袋数量

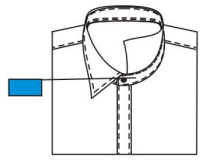
- 538A 左口袋
- 538B 右口袋
- 538C 左右口袋
- 5L72 左右口袋(右口袋不做笔袋)

## 口袋大小

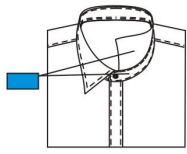
- 5781 XS码
- 5361 S码
- 537A M码
- 537B L码
- 537C XL码
- 537D 2XL码
- 537E 3XL码
- 52B0 口袋大小8.5\*12.5cm



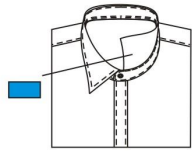
# 领子、袖头、门襟配色



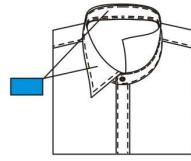
S-5549  
底领里配色



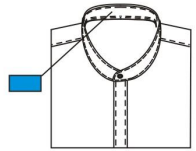
S-5517  
领子里配色



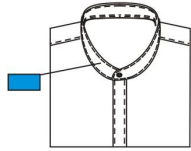
S-5532  
上领里配色



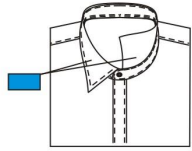
S-5518  
领子面配色



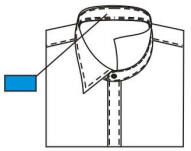
5517  
领里配色



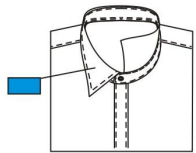
5518  
领面配色



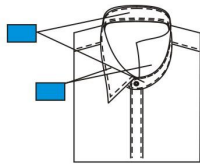
S-5551  
上领配色



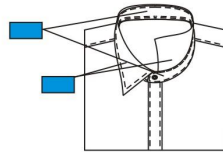
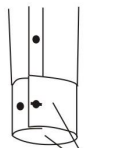
S-5533  
底领面配色



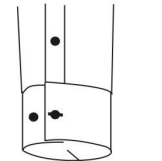
S-5552  
上领面配色



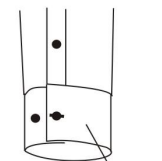
5511  
领子、袖头配色-



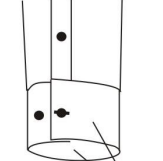
5512  
领子配色-



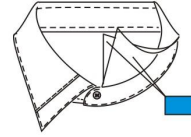
5534  
袖头里配色-



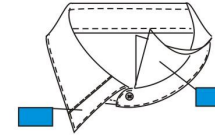
554D  
袖头面配色-



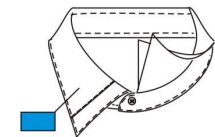
5513  
袖头配色-



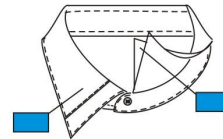
5583  
双层领,上层与  
下层领里配色-



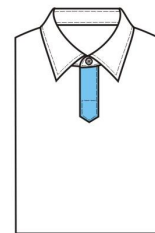
5B12  
双层领,下层领  
配色(领面+领里)-



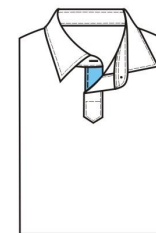
5B19  
双层领,上层领面配色-



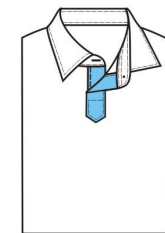
5B41  
双层领,上层领配色-



5596  
套头衫左门襟客户指定色-

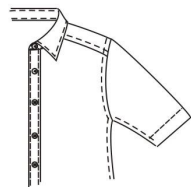


5597  
套头衫右门襟客户指定料-

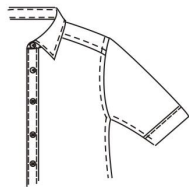


5D53  
套头衫袖叉(左+右)配色-

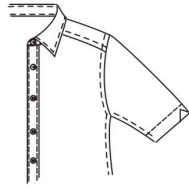
## 短袖款式



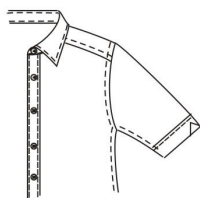
S-54A0  
短袖内握



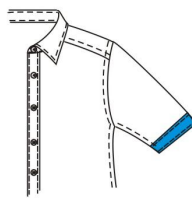
S-54A1  
短袖假翻边



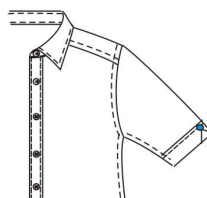
S-54A2  
短袖内握袖口开叉



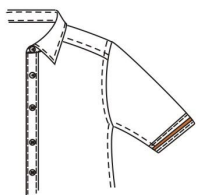
S-54A3  
短袖假翻边袖口开叉



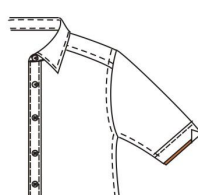
S-54A4  
短袖外挂边  
(建议做配色)



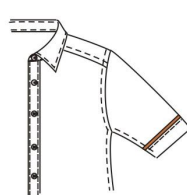
S-54A5  
短袖假翻边袖口开叉  
钉一粒扣子



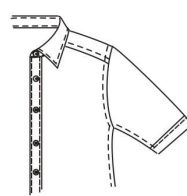
5AC4  
短袖袖口外挂边,  
袖口加织带-



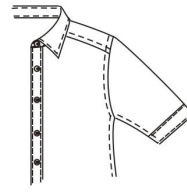
54B0  
短袖袖口假翻边里配色  
外漏0.5CM,加开衩-



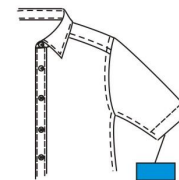
5G52  
短袖外翻夹0.3cm沿条-



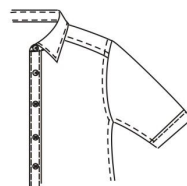
56L4  
短袖外挂边(宽1.5cm)



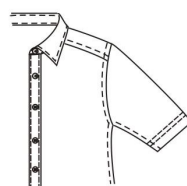
52B9  
短袖外挂边(上下各  
压0.15cm明线)



S-54A9  
短袖内贴边  
(建议做配色)

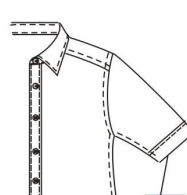


56L4  
短袖外挂边(宽1.5cm)

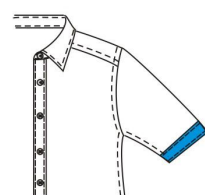


56B9  
短袖口内握四线机0.5双线转圈  
压袖口宽度2.5cm(仅限针织面料)

## 短袖口配色款



S-54A7  
短袖假翻边里配色



S-554K  
短袖袖口配色面料-

## 底领中宽

9A65 底领中宽3.0cm 9A64 底领中宽2.5cm

9A11 底领中宽3.5cm 9B05 底领中宽3.8cm

9A13 底领中宽4.2cm 9A14 底领中宽4.5cm

9A67 底领中宽5.0cm 9A68 底领中宽5.5cm

## 领豁口

9A30 领豁口0cm 9A31 领豁口0.6cm

## 领台高尺寸

9A21 前领台高--2.2cm

9A22 前领台高--2.5cm

△9A71 前领台高--3.0cm

9A72 前领台高--3.5cm

9B29 前领台高--4.2cm

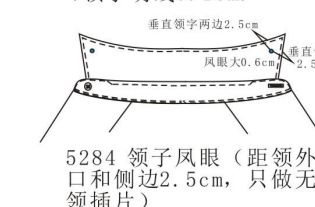
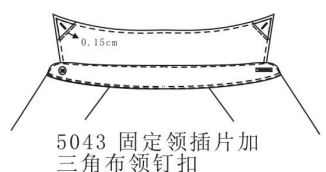
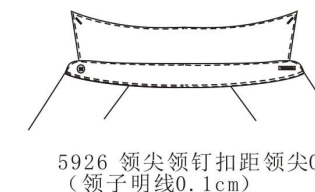
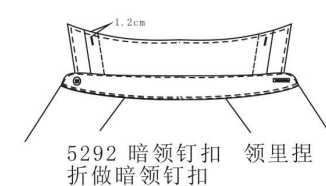
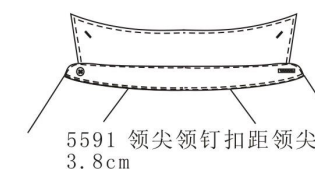
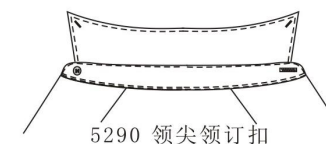
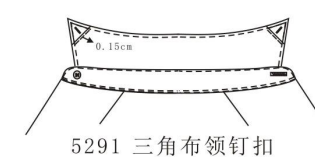
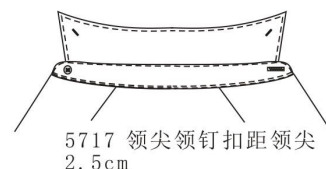
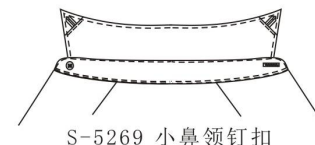
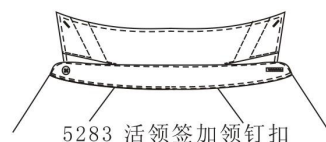
9A24 前领台高--3.2cm

9A25 前领台高--3.8cm

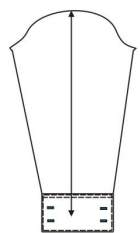
9A74 前领台高--4.5cm

9A75 前领台高--5.0cm

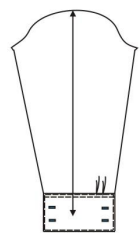
## 领钉扣、插片形式



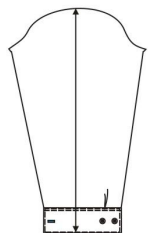
## 袖口折形式



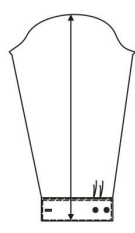
5436  
法式袖口无折



5465  
法式袖口双折



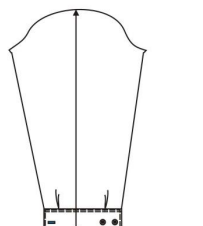
5461  
普通袖口单折



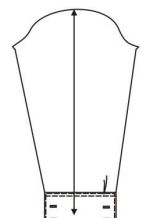
5462  
普通袖口双折



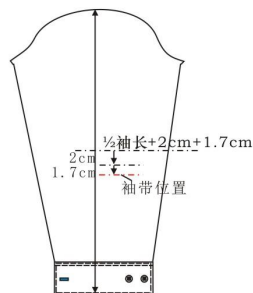
5460  
普通袖口无折



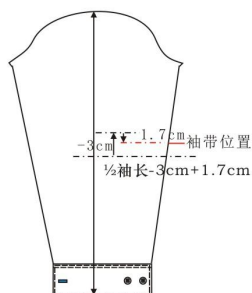
54C2  
普通袖口双折, 大袖花一侧一个折, 倒向大袖花, 小袖花一侧一个折, 倒向小袖花



5464  
法式袖口单折



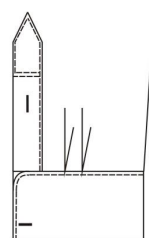
54B1  
袖带在肘位  
( $1/2$ 袖长-2)



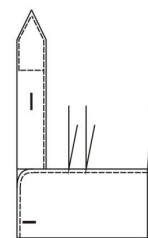
54B2  
袖带在上臂  
( $1/2$ 袖长+3)

## 袖带位置

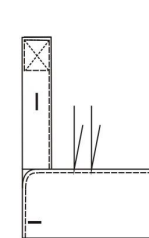
## 袖花形式



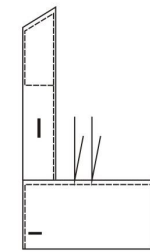
5590  
大袖花宝剑头  
双明线封接



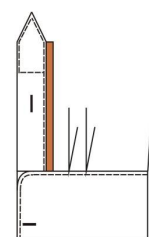
5B71  
△宝剑头袖花



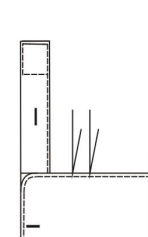
5A23  
直角袖花, X封结



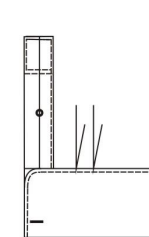
544A  
斜角袖花



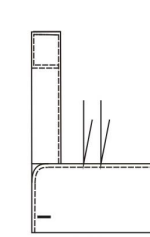
5F95  
宝剑头袖花,  
大袖花一侧夹  
0.3cm配色沿条



5A45  
直角袖花



52B4  
外翻 $1/2$ 直角袖  
花双明线封结



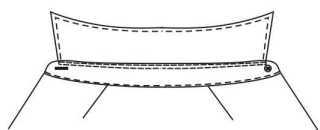
52B3  
直角袖花双明线封结,  
大袖花不锁透, 先锁眼  
后上袖花

## 门襟锁钉形式及门襟宽度手工锁眼

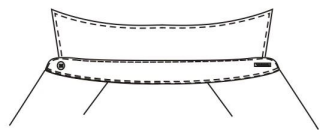
5351 门襟宽3.2cm(用于手工锁眼里三折/平头袖叉式套头衫/尖角袖叉式套头衫门襟)

5D62 套头衫袖叉多加一粒扣

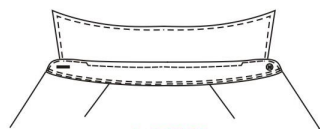
## 领中线形式



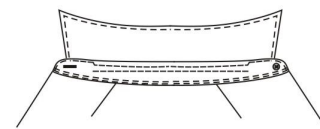
57C3  
领中线做双明线



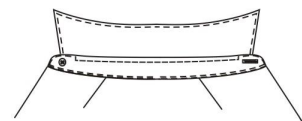
57C4  
领中线压0.1cm(不带拐角)



△5577  
领中线斜拐

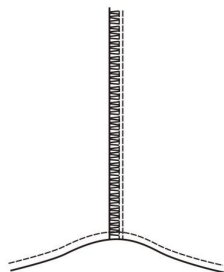


5589  
领中线斜拐,底领中间压一道线(压透,位置到斜拐处)

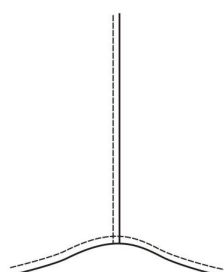


5758  
领中线4cm处0.1cm直拐0.6cm

## 侧缝形式

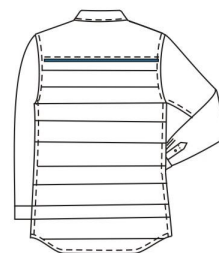


55X7  
男衬衣侧缝五线扒边

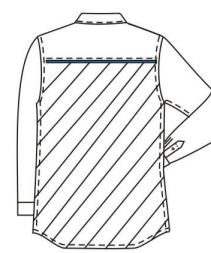


58U4  
△手包缝

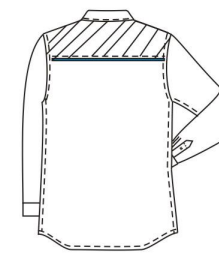
## 裁剪方向



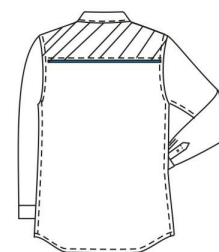
5808  
后片纬向裁剪



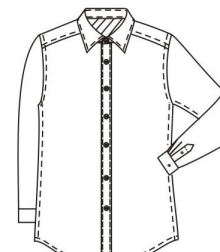
531C  
后片大身斜裁



5174  
过肩面、里45度斜裁



5176  
过肩面45°斜裁



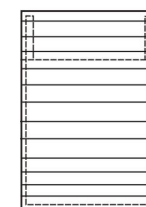
5175  
过肩里45度斜裁



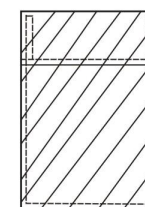
531A  
全身纬向裁剪



5807  
前片纬向裁剪

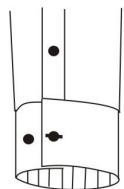


5811  
口袋纬向裁剪

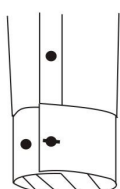


570A  
口袋45度斜裁

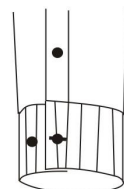
# 裁剪方向



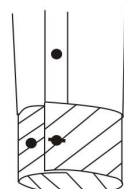
549J  
袖头里纬向  
裁剪



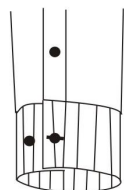
547K  
袖头里斜裁



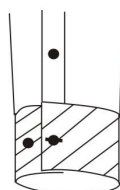
549I  
袖头面纬向  
裁剪



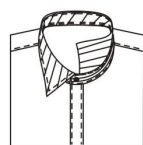
549H  
袖头里/面都斜裁



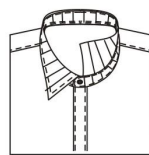
549B  
袖头纬向  
裁剪



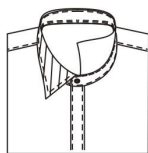
549A  
袖头面斜裁



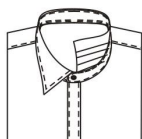
549C  
领子斜裁



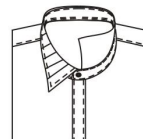
549D  
领子纬向  
裁剪



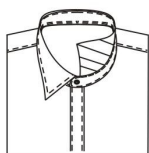
549F  
上领面斜裁



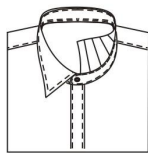
5802  
上领里正常  
裁



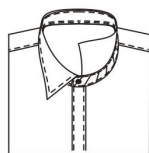
5801  
上领面纬向  
裁剪



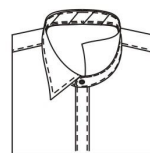
5816  
上领里45°  
斜裁



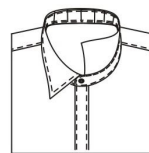
5803  
上领里纬向  
裁剪



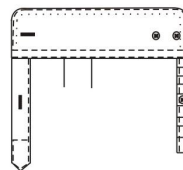
548E  
底领里斜裁



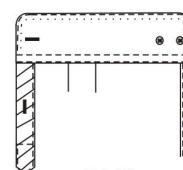
548D  
底领面斜裁



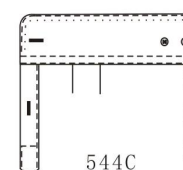
5804  
底领面纬向  
裁剪



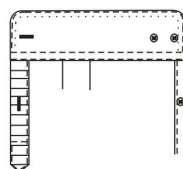
544G  
小袖花纬向  
裁剪



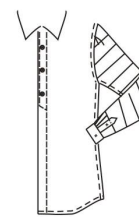
544B  
大袖花斜裁



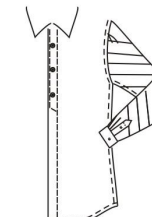
544C  
小袖花斜裁



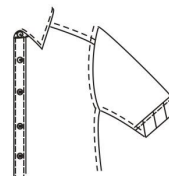
549E  
大袖花纬向  
裁剪



5809  
袖子纬向  
裁剪



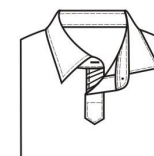
5810  
袖子45°  
斜裁



5818  
短袖袖口外  
挂边45°  
斜裁



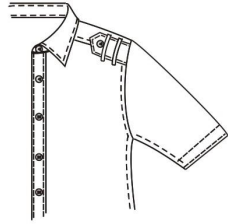
5757  
套头衫左  
门襟斜裁



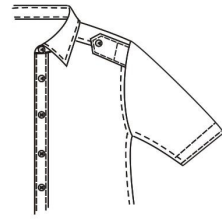
5756  
套头衫右  
门襟斜裁



## 肩章形式



5173  
肩部加肩章,加双袂,  
距毛领口2.5过肩量  
1cm(默认没有封接,  
MW客户打封接)



5172  
肩部加肩章,距毛领口2.5,  
过肩量1cm(默认没有封接,  
MW客户打封接)

## 刺绣位置



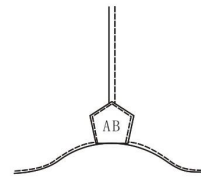
左大袖花  
右大袖花



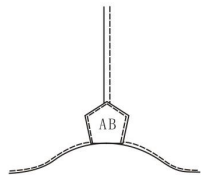
左大底部袖花  
右大底部袖花



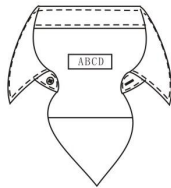
左大袖花宝箭头处  
右大袖花宝箭头处



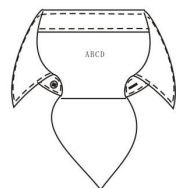
左侧贴布



右侧贴布



过肩主标位置  
钉小布条



过肩里顶部刺绣



左前边底部距底  
边5cm



左腰部刺绣肩颈点  
向下46cm(净量)



左腰绣字



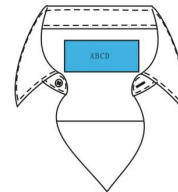
右腰绣字



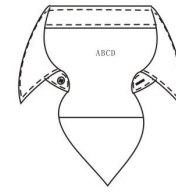
右胸部绣字



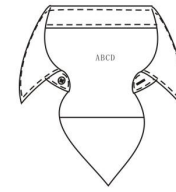
左胸部绣字



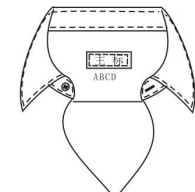
客户名牌刺绣



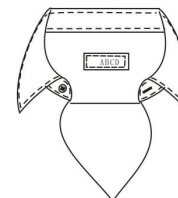
过肩里主标位  
置绣客户LOGO



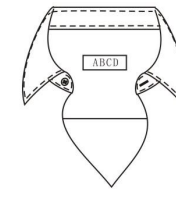
过肩里主标位置



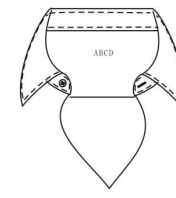
过肩里主标位  
置下1cm位置



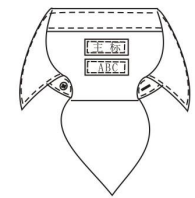
过肩主标位置  
钉小布条



过肩主标位置  
钉小布条

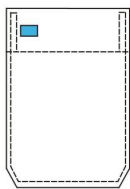


过肩里顶部刺绣

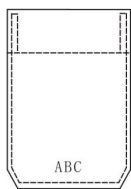


过肩里钉小布条  
(主标向上移1cm)

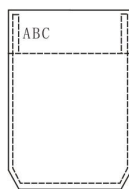
# 刺绣位置



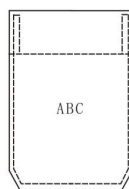
口袋口右边  
凯妙标志



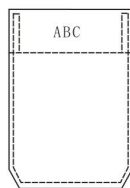
口袋底部刺绣



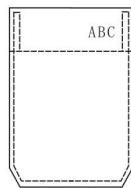
口袋口右边



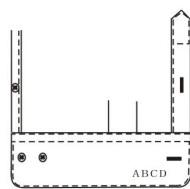
口袋正中



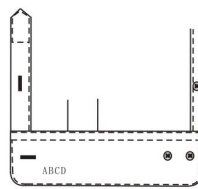
口袋口居中



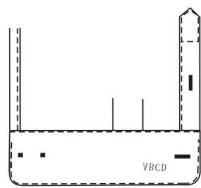
口袋口(从左边  
向右1.2cm折  
1/2处的交点



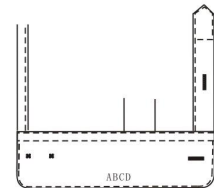
右袖头面



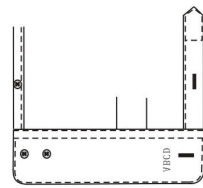
左袖头面



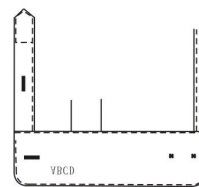
左袖头里(字母反向  
绣,翻过袖头)



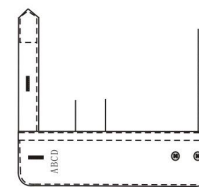
左袖头面正中位置刺  
绣



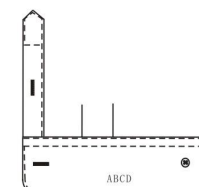
右袖头侧面(竖排)



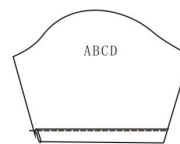
右袖头里(字母反向  
绣,翻过袖头)



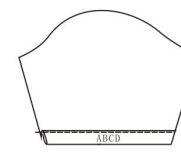
左袖头侧面(竖排)



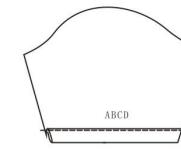
右袖头面正中位置刺  
绣



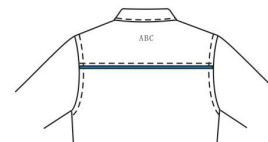
左袖袖肥中间  
处刺绣



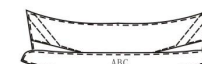
右短袖口居中绣字  
左短袖口居中绣字



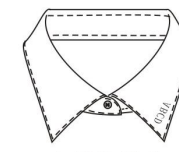
左短袖袖口外侧居中  
,袖口往上4CM



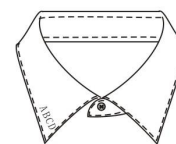
过肩面主标位置



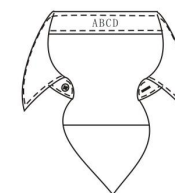
底领里居中刺绣



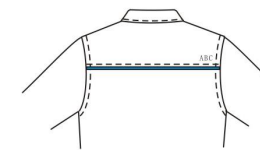
右领尖绣字,  
紧贴明线右



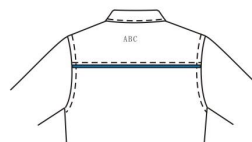
左领尖绣字,  
紧贴明线



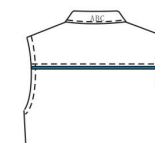
底领面居中



过肩左侧底部刺绣



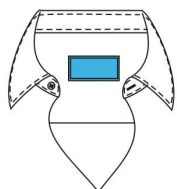
过肩面顶部



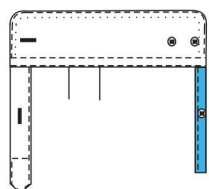
上领面居中



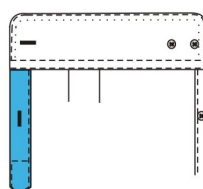
## 配色部位



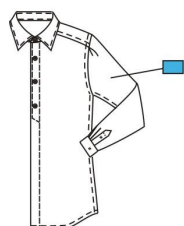
5550  
过肩里贴布配色  
(长8cm宽6cm)-



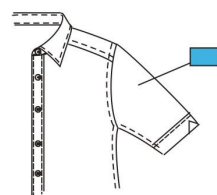
5546  
小袖花配色, 配色料-



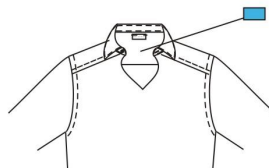
5560  
大袖花配色, 配色料-



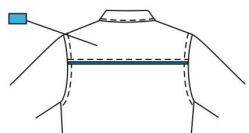
554N  
袖子配色(长袖),  
客户指定料-



554Q  
袖子配色(短袖),  
客户指定料-

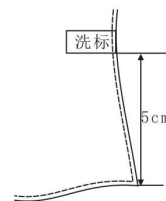


5544  
过肩里配色, 配色料-



554F  
过肩面配色-

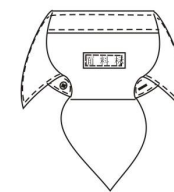
## 洗标及面料标位置



57P3  
△洗标钉侧缝



59A7  
面料标距洗标  
下0.5cm处

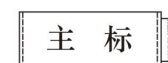


59A7  
面料标位置 - 过肩里

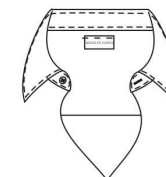
## 产地标



△57P4  
产地标钉主标下面

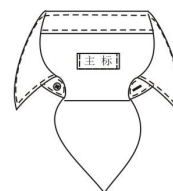


5750  
客供产地标钉主标左侧

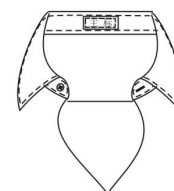


主标四面缝  
产地标位置

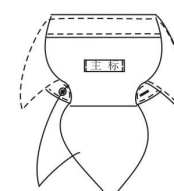
## 商标



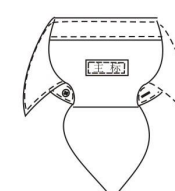
△57D7  
主标钉过肩里-



57D8  
主标钉底领面-

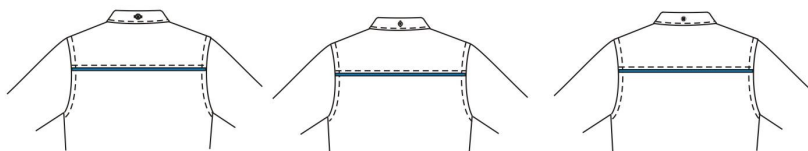


57D2  
主标两面缝



57D1  
主标四面缝

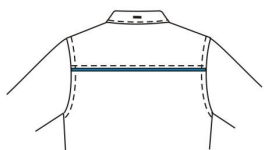
## 后领中锁眼形式



5571/5293  
后领中锁横眼钉扣

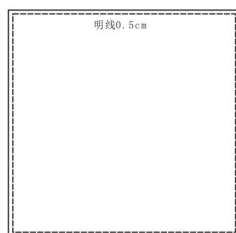
5882  
后领中锁竖眼  
(距领缝0.5cm开始锁)

5737  
立领后领居中钉一扣



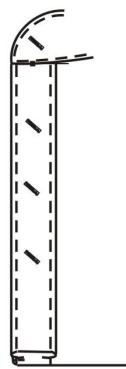
5AQ9  
立领后领居中锁眼

## 零部件

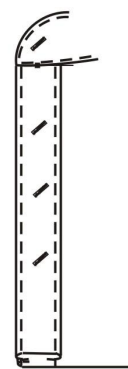


5L66 36\*36的方巾, 领带固定条  
5L67 30\*30的方巾, 领带固定条  
57Z9 做一个25cm\*25cm的手帕

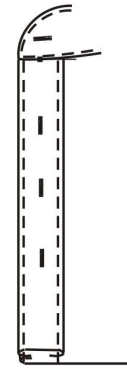
## 锁眼形式



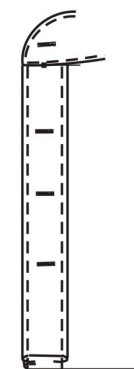
531J  
门襟锁45°斜眼



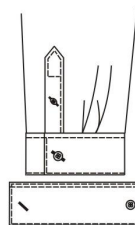
531I  
门襟锁135°斜眼



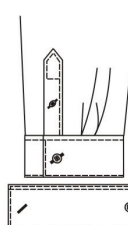
△默认锁眼样式  
领台横眼门襟竖眼



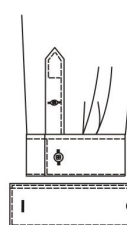
领台横眼  
门襟横眼



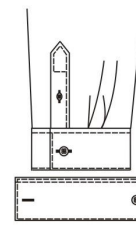
袖花45度斜眼  
袖头45度斜眼



袖花135度斜眼  
袖头135度斜眼



袖花横眼  
袖头横眼



△默认袖花竖眼  
袖头竖眼

## 客户指定线

5623 领台钉扣线客户指定色 -

56K9 领台第二粒扣客户指定钉扣线-

5624 门襟第二粒扣钉扣线客户指定色 (含领台扣) -

5625 门襟第三粒扣钉扣线客户指定色 (含领台扣) -

5626 门襟第四粒扣钉扣线客户指定色 (含领台扣) -

5627 门襟第五粒扣钉扣线客户指定色 (含领台扣) -

5630 袖花钉扣线客户指定色 -

5631 袖头钉扣线客户指定色 -

58K3 领子明线 - 客户指定色-

58N4 袖头明线 - 客户指定色-

58R5 大身明线 - 客户指定色-

5788 定标线客户指定色-

5789 口袋口锁眼线客户指定色-

561B 领台扣第一粒扣的锁眼线-

5613 领台锁眼线客户指定色 -

561Z 领台第二粒扣锁眼线 客户指定线-

5632 领尖领钉扣锁眼线客户指定-

5614 门襟第二粒扣锁眼线客户指定色 (含领台扣) -

5615 门襟第三粒扣锁眼线客户指定色 (含领台扣) -

5616 门襟第四粒扣锁眼线客户指定色 (含领台扣) -

5617 门襟第五粒扣锁眼线客户指定色 (含领台扣) -

562A 袖花锁眼线客户指定色 -

5793 袖头第三个眼锁眼线色 (距袖头外口), 客户指定色-

5794 袖头第二个眼锁眼线色 (距袖头外口), 客户指定色-

5792 袖头第一个眼锁眼线色 (距袖头外口), 客户指定色-

562B 袖头锁眼线客户指定色 -

599M 右袖头指定锁眼线-

599N 左袖头指定锁眼线-

5612 锁眼线客户指定色-

## 客户指定扣

52F9 施华洛世奇领台扣客户指定(用于领台2粒扣款)-

59D3 门襟第一粒扣客户指定(不含领台扣) -

5572 门襟第二粒扣客户指定 (不含领台扣) -

57N7 客户指定扣子-

5585 领钉扣客户指定扣子-

56M4 施华洛世奇领钉扣客户指定-

57C7 袖花扣客户指定扣子-

52G5 施华洛世奇袖花扣客户指定(用于袖花1粒扣款)-

5A22 据袖头外边第一粒扣, 客户指定扣-

5025 左袖头客户指定袖扣-

5026 右袖头客户指定袖扣-

5A30 左口袋袋盖客户指定扣-

5F96 后领中锁扣客户指定扣-

5584 门襟扣客户指定扣子-

56K7 施华洛世奇门襟第一粒扣客户指定(不含领台扣)-

5576 袖头扣客户指定扣子-

56J7 施华洛世奇短袖袖口指定(用于短袖袖口1粒扣款)-

52G2 施华洛世奇袖头扣客户指定(用于袖头2粒扣款)-

52G3 施华洛世奇袖头扣客户指定(用于袖头3粒扣款)-

52G4 施华洛世奇袖头扣客户指定(用于袖头4粒扣款)-

52G1 施华洛世奇袖头扣客户指定(用于袖头1粒扣款)-

57C8 领台扣客户指定扣子-

52F8 施华洛世奇领台扣客户指定(用于领台1粒扣款)-

## 门襟锁眼

- 560I 门襟第二粒扣锁横眼 (含领台扣)
- 560J 门襟第二粒扣锁45度斜眼 (含领台扣)
- 560K 门襟第二粒扣锁135度斜眼 (含领台扣)
- 560L 门襟第三粒扣锁横眼 (含领台扣)
- 560M 门襟第三粒扣锁45度斜眼 (含领台扣)
- 560N 门襟第三粒扣锁135度斜眼 (含领台扣)
- 560P 门襟第四粒扣锁横眼 (含领台扣)
- 560Q 门襟第四粒扣锁45度斜眼 (含领台扣)
- 560R 门襟第四粒扣锁135度斜眼 (含领台扣)
- 560S 门襟第五粒扣锁横眼 (含领台扣)
- 560T 门襟第五粒扣锁45度斜眼 (含领台扣)
- 560U 门襟第五粒扣锁135度斜眼 (含领台扣)

## 袖头高度

- |                  |                     |
|------------------|---------------------|
| 546K 袖头高5cm.     | 546L 袖头高5.5cm       |
| 546M 袖头高6cm.     | 546B 袖头高6.5cm       |
| 546A 袖头高7cm.     | 546E 袖头高7.5cm       |
| 546C 袖头高8cm.     | 546N 袖头高8.5cm       |
| 546F 袖头高9cm.     | 546P 袖头高9.5cm       |
| 546G 袖头高10cm     | 546Q 袖头高10.5cm      |
| 546H 袖头高11cm     | 546R 袖头高11.5cm      |
| 546J 袖头高12cm     | 546S 袖头高度6.5, 7.5cm |
| 546U 袖头高度6, 7cm  | 546Y 袖头高度9, 10cm    |
| 546V 袖头高度7, 8cm. | 546Y 袖头高度8, 6cm     |
| 546X 袖头高度8, 9cm. |                     |

## 明线类型

△57A1 领子明线0.15cm

57A2 领子明线0.6cm

57A3 领子明线0.3cm

5288 领子压3道明线(第一道明线0.15cm,  
第三道明线0.6cm,第二道明线居中)

57C1 领子无明线 (领里压一道线)

57B2 领子双明线 (0.15+0.6)

△57A5 袖头明线0.15cm

57A7 袖头明线0.3cm

5575 袖头无明线 (袖头里压一道线)

57A6 袖头明线0.6cm

5841 袖头双明线(0.15cm+0.5cm)

5305 袖头压3道明线(第一道明线0.15cm,  
第三道明线0.6cm,第二道明线居中)

△5709 门襟明线0.15cm

## 衬类型

5752 领子无衬 底领面粘一层无纺衬(领子明线0.15cm)

5AE4 领子特软衬(FYC-5030一层 直丝)

△5701 领子软衬

5700 领子标准衬

5702 领子厚衬

5751 袖头无衬(袖头明线0.15cm)

5AE3 袖头特软衬(FYC-5030一层 直丝)

△ 5705 袖头软衬

5704 袖头标准衬

5706 袖头厚衬

5712 袖花软衬 (无纺衬)



## 绣字字体

<i>ABCDEFGHIJKLMN OPQRSTUVWXYZ</i>	RC01
<b>ABCDEFGHIJKLMN OPQRSTUVWXYZ</b>	RC02
<b>ABCDEFGHIJKLMN OPQRSTUVWXYZ</b>	RC03
<i>ABCDEFGHIJKLMN OPQRSTUVWXYZ</i>	RC04
<b>ABCDEFGHIJKLMN OPQRSTUVWXYZ</b>	RC05
<b>ABCDEFGHIJKLMN OPQRSTUVWXYZ</b>	RC06
<b>ABCDEFGHIJKLMN OPQRSTUVWXYZ</b>	RC07
<b>ABCDEFGHIJKLMN OPQRSTUVWXYZ</b>	RC08
<b>ABCDEFGHIJKLMN OPQRSTUVWXYZ</b>	RC09

## 袖窿加减

58S2 袖窿加2cm	58S3 袖窿加1cm
58S5 袖窿减1cm	58S6 袖窿减2cm

## 袖花扣位置

59C4 袖花扣下调1CM
59C5 袖花扣下调2CM
59C6 袖花扣下调3CM

## 零部件要求

57D3 配件封口加款式代码
5993 配件封口不加款式代码
57D4 配件不封口
5983 做一个左袖子
5984 做一个右袖子
57P9 做一对袖子
7032 做右袖头配件系列
7033 做左袖头配件系列
7010 做一对袖头配件系列

做刺绣样品时可根距客户要求选择系列，内容、大小、线号不可更改

## 前后领口下开

58T0 前领口下开0.5cm    58T1 前领口下开1cm  
58T5 后领口下开1cm.    58T6 后领口下开0.5cm

## 前后片调整

58T9 调整腹围前后片尺寸, 前片加4cm, 后片减4cm  
58TK 调整腹围前后片尺寸, 前片加2.5cm, 后片减2.5cm

## 过肩高度

5639 过肩高度11.5cm    5C63 过肩高度7cm

## 前臂围加减

58UA 前臂围加1cm    58UB 前臂围加2cm  
58UC 前臂围加3cm    5592 前臂围减1CM  
5593 前臂围减2CM    5594 前臂围减3CM

## 腹围加减

58TX 腹围减1cm    58TY 腹围减2cm  
58TZ 腹围减3cm    58TD 腹围加3cm  
58TE 腹围加2cm    58TF 腹围加1cm

## 袖肥加减

58TU 袖肥减1cm    58TV 袖肥减2cm  
59TA 袖肥下9cm减1cm    59TB 袖肥下9cm减2cm  
59TC 袖肥下9cm减3cm    59TG 袖肥加1cm  
59TH 袖肥加2cm

## 钉扣形式



△ “十” 字钉扣



57B2  
“=” 号钉扣



5K11  
凯妙鸡爪钉扣  
(手缝)