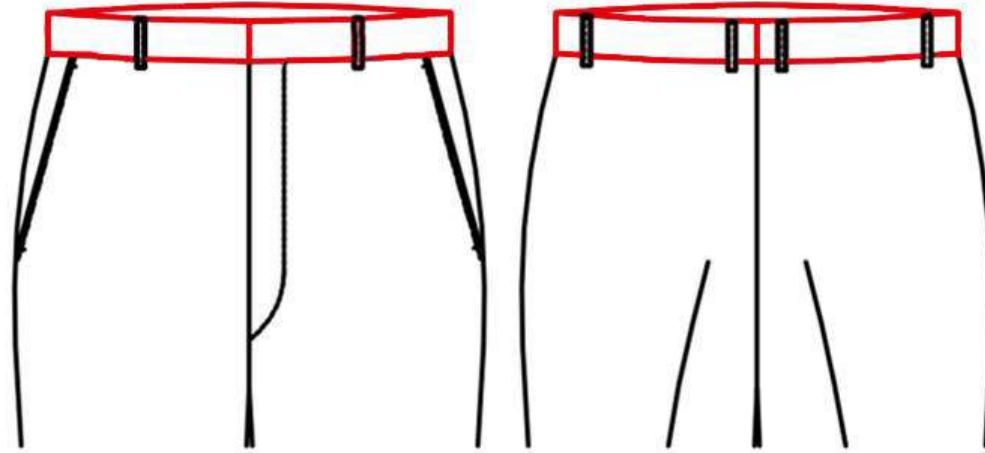


Waistband





3010 Standard waist



3011 continued waistband



301F waist width 5.0cm

33A2 waistband fabric-customer appointed



301E waist width 3.8cm



3346 Beltloop in Center back seam on waistband



3355 back central seam with V shape opening



3353 I shape back waist slotting

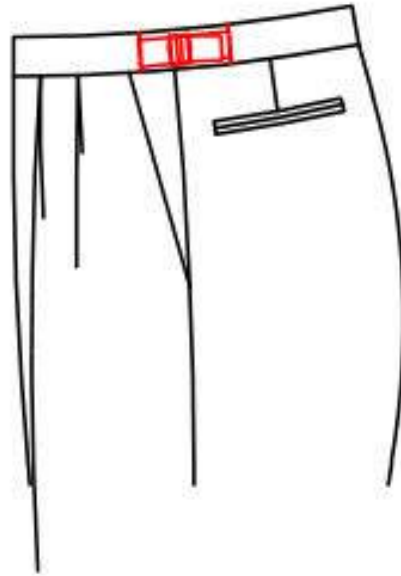


335C Back central seam V shape vent
3359 Red X stitching on V Seam on pant



3423 Belt buckle loop

Waistband adjustment style





33TA Waist adjust buckle
GB201 with beltloop



3351 Adjust buttons



33T4 Pointed adjust buttons

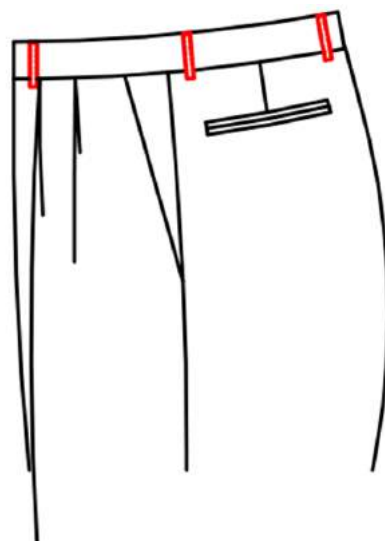


33T5 Round adjust buttons



3352 Adjust buckle, buckle number
QZMAB02-2

Belt loop





3329 No belt loop



3330 Normal belt loop



3331 Double belt loop



3335 2.0cm wide slant beltloop



3332 Belt loops with 2cm width



3334 Buttons on belt loop
333B no top stitch on belt loop

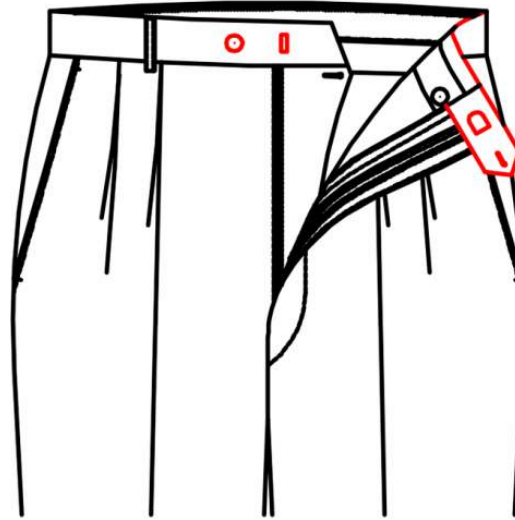


3337 Belt loop 1.3cm width
3344 belt-loop clipped inner the waist
3347 normal dropped beltloops



333E Only front belt loop X shape
Others are normal belt loop

Extender





3411 No extension with button



3410 No extension,with hook



342A squared extender with hook and button



3414 Square extender with double hooks



3412 Pointed extender with hook & button



3413 rounded extender with hook and button



341A Extender 7.5cm

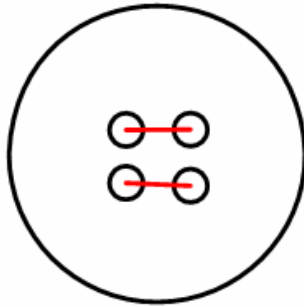


341D extender length 6.5cm



3415 Round extension with small extension 3416 Pointed extender attached small pointed extender

buttonhole/button





34Y1 square button sewing form



345A "="



345C Claw shape



345B "+"
329A Eyelet buttonhole



329B Normal buttonhole

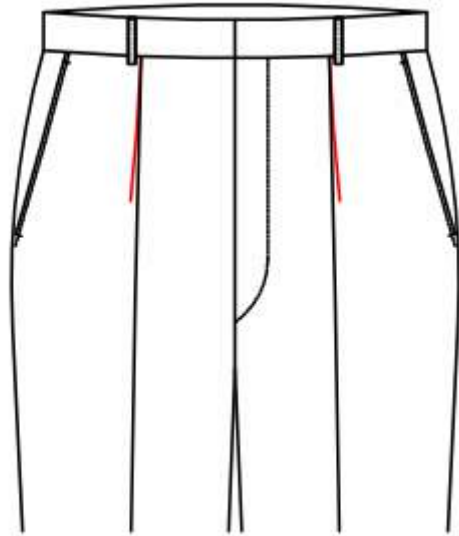


345H Button thread match buttonhole thread



35DA Waistband buttonhole thread appointed
345H button thread match buttonhole thread

Front pleat





3020 Plain front
302L Plain front



3021 Single pleat forward side seam



3022 Single pleat forward fly



302Q Plain front with side single dart



302M Plain front with single dart



3027 One opposite pleat

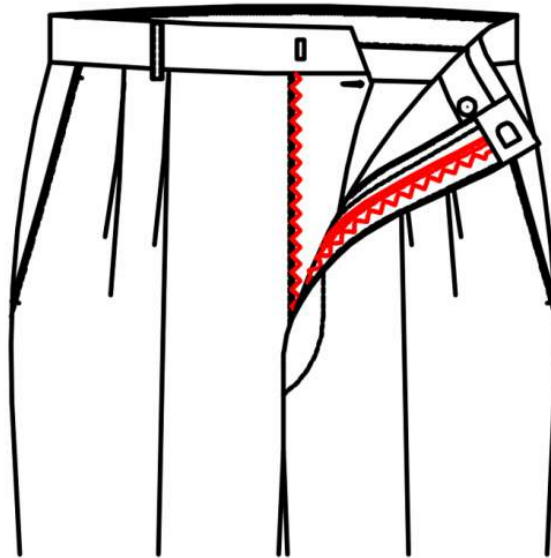


3023 Double pleats forward side seam



3028 one opposite pleat
one pleat forward side seam

Front fly style



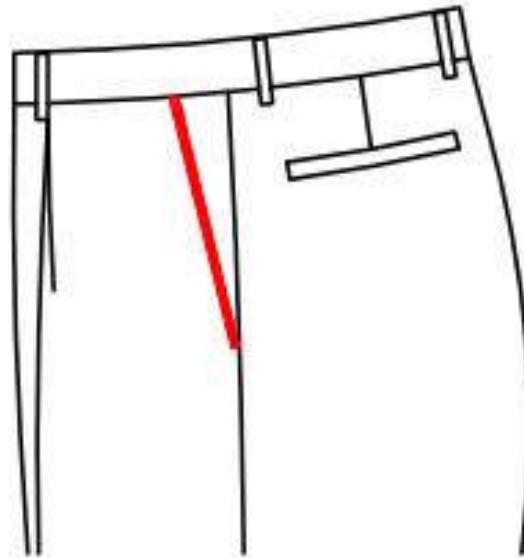


3420 Nylon zip



3421 front style: Metal zipper

Front pocket





3104 2.5 slant pocket



3130 Sideseam pocket



3131 Double besom pocket



3132 Welt pocket



3134 Diamond jeans pocket



3138 DL jeans pocket



3101 3.2cm slant pocket



3135 Arc jean front pocket



3136 Round jeans pocket



3105 5.1 slant pocket+besom ticket pocket(8cm)



3121 3.2cm slant pocket with strip
3191 front pocket-"I" shape bartack



3102 5.1cm slant pocket



3122 5.1cm slant pocket with stripe



313B Slant pokcet with sqaure point

3149 customer appoint fabric for 0.8cm splice on front pocket

Watch pocket





318P Double besem right watch pocket
(5cm below waistseam/pocket opening 7cm)



318W vertical right welt watch pocket



3174 Left watch pocket with diamond flap



3181 Right welt watch pocket



3186 Right watch pocket with diamond flap and button



3188 double besem right watch pocket



3185 Right watch pocket with
square flap with button



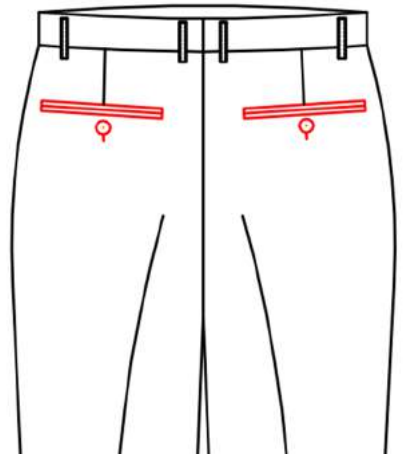
3180 Normal right watch pocket



3178 double besome left watch pocket

318M outside pocket besome uses appointed fabric

Back pocket





31A0 No back pocket



3220 Besom back pocket



3221 Besom back pocket
with button and buttonhole



3200 double besom back pocket



3201 double besom with button back pockets



3202 Double besom with
tab and button back pockets



3203 Double besom with
pointed tab and button back pocket



3211 standard flap back pocket
with button and buttonhole



3212 Back pocket with rhombus flap



3212 Back pocket with rhombus flap and button&buttonhole



32C3 knife shape back pocket



3233 rounded patch back pocket with button and buttonhole



3205 back pockets with zipper
33H0 0.15cm pic stitching around hip pocket



320D Double besom right pocket
pocket/double besom left pocket with point tab and button



32P7 double besom left back pocket
with pointed tab & button \diamond flap right back pocket
with button & buttonhole



320B Double besom right pocket/Double Besom Left pocket w/button
33H1 0.3cm pic stitching around hip pocket



320g Double besom right back pocket
no left back pocket button and buttonhole only
no left back pocket

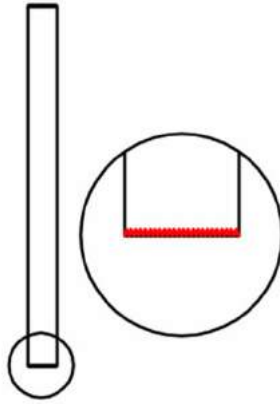


320F Double besom right back pocket, no left back pocket



3219 Double besom with pointed tab
and button left back pockets
pointed flap with button right pocket

Seal style





3191 front pocket-I shape bartack



3193 front pocket edge with "-" bartack

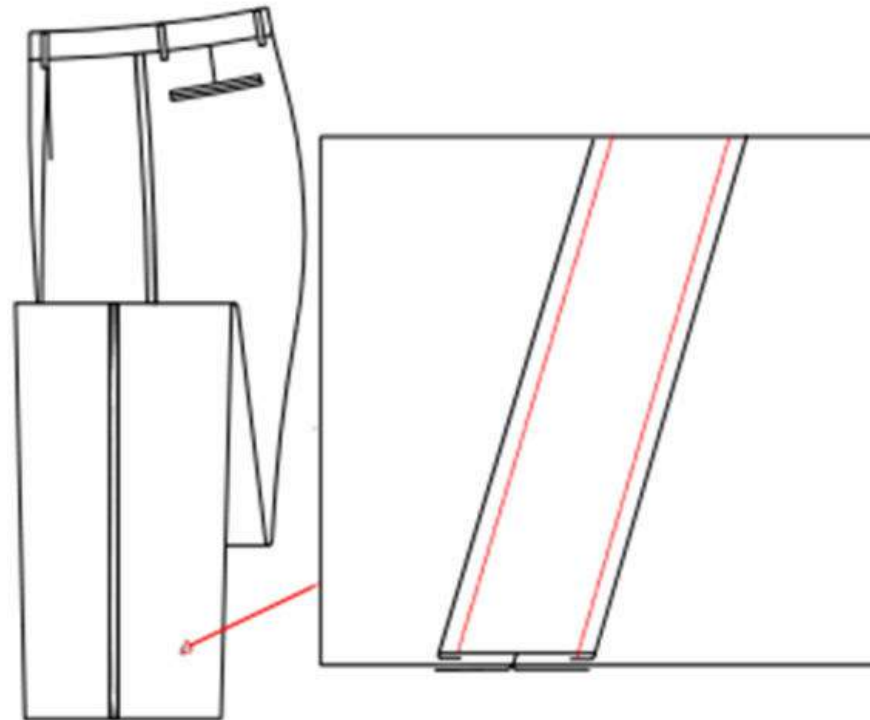


3291 back pocket-"I" shape bartack



3292 back pocket-"D" shape bartack

Side seam style





3313 side seam with satin stripe (2.0cm width)

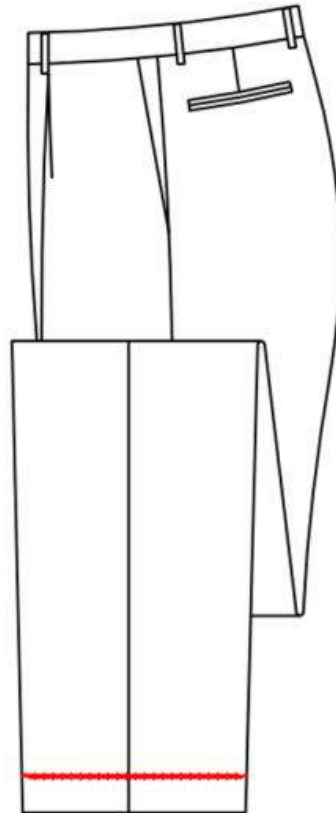


3314 side seam with satin (1.2cm width)



3316 sideseam with 0.6cm satin piping

Pant bottom





360L 2.5cm turn up outside of the slack bottom



3602 3.2cm turn up outside of the slack bottom



3603 3.8cm cuff



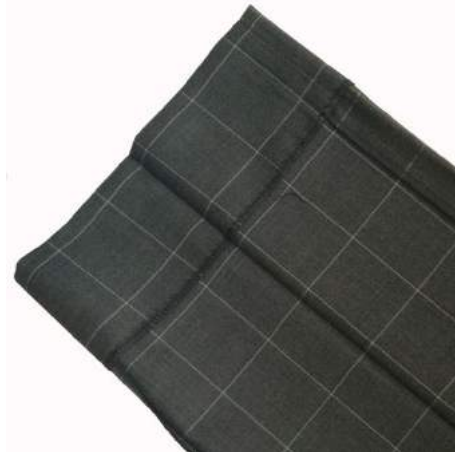
3604 4.4cm turn up outside of the slack bottom



3605 5.1cm cuff



360H Plain 9cm



3608 Plain 7cm



360k slant bottom with 4cm inner edgefold
3614 add whole circle heel guard belt at pant bottom
361A monogram on heel guard



3607 Plain 6.4cm
3611 heel guards



360G Unfinished pant bottom
with 10cm extra fabric



33B8 3.0cm width heel guard



3629 sew trouser bottom manually
3611 heel guards

Inner waistband





3430 standard waistband



344E standard waistband with customer appointed piping



3434 Waistband W/Pleated Curtain



3435 pleat waistband with Griplets



3436 pleat waistband with snugtex



3441 Standard waistband with pant lining piping and snugtex



3440 normal inner waistband with snugtex



3443 Gripper waistband



3444 Standard inner waist with Suspender Buttons



3449 Standard waist with
Suspender Buttons and Snugtex



3445 pleat waistband with snugtex,button



344F customer request special
waistband suspender button——



3427 Blue snugtex in waistband of
sideseam(length 12cm and have two in total)



344H customer appointed inner waistband-



344C Customer appoint fabric for
inner waistband(only use pocket fabric)-

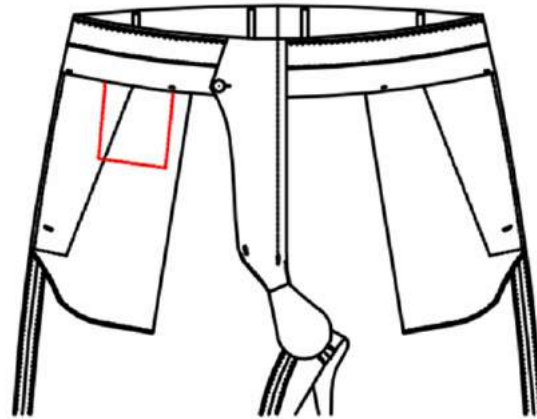


344A Double fuse waistband



344B soft inner waistband

Inner watch pocket



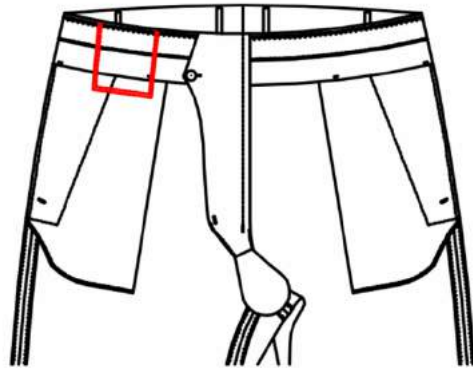


3183 Right inner watch pocket



3713 Left inner watch pocket

Waist card pocket





3162 right waist card bag

(between the waistband and inner waistband, with 9.5cm width)



3161 left waist card bag

Coin pocket style



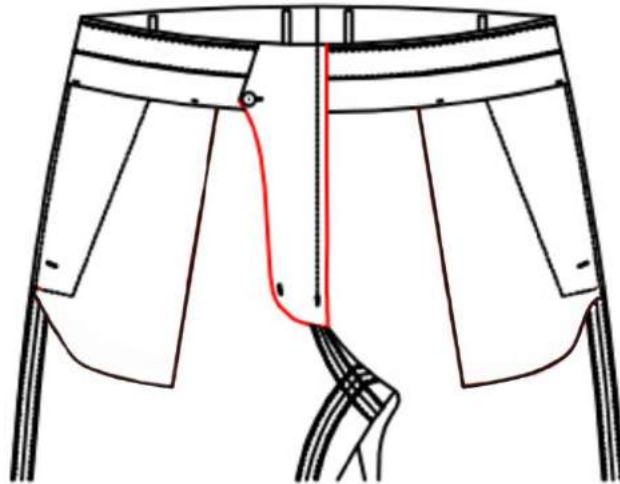


3530 Right coin pocket



3532 Left&right coin pocket

Inner fly style





3400 fly style: Fish-mouth fly



3405 small fish claw shape rounded under fly



3403 French fly



3402 Fish claw fly

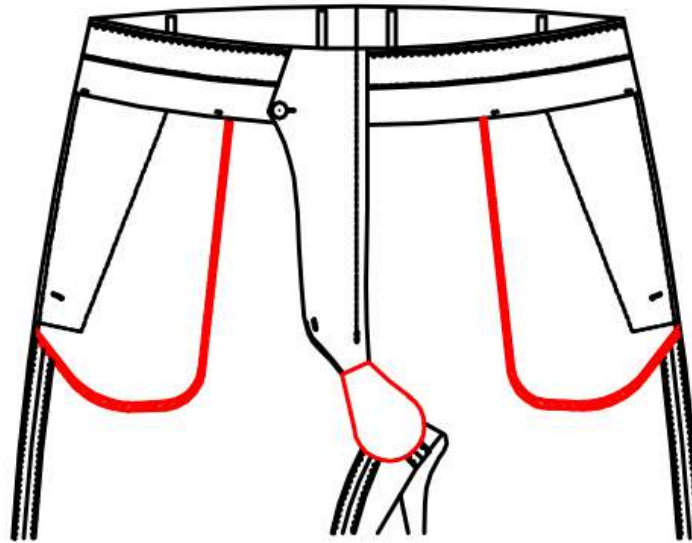


340B inner fly with fabric



3406 Pointed fly

Type of pocket and U-rise bottom





3144 add front pocketing depth by 2cm
 35C1 Pocket fabric-customer appointed
 35B9 pocket piping customer appointed fabric



3145 reduce front pocketing depth by 2cm



3147 reduce front pocketing depth by 4cm
 3446 customer appointed materials for waistband
 pocket, pocket wrapping, under closure, small rise
 small rise piping and placket piping



35A3 0.5cm pic.stitch from inner square pocket
 to outer square pocket



35A4 pocketing with top stitch outside
 bottom fly fabric with tail



35B4 Square pocketing with top stitch
crotch with With ellipse gusset



342B customer appointed material for waistband
pocket and pocket piping
crotch fabric
crotch piping
fly piping
bottom fabric
of the back
crotch
back crotch piping

Back rise style





3521 Piping on back rise

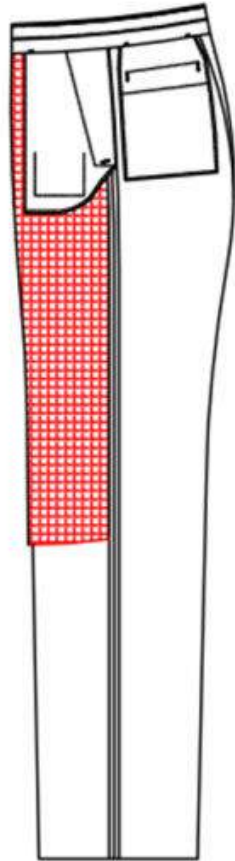


3520 Back rise stitched



3523 net shape wrapping all used on side seam
inner seam and back crotch seam

Pant lining





3501 front lining, pocket outside the lining



3502 front lining, pocket inside the lining



3505 full pant lining with pocketing outside
350D customer appointed pant lining-



3503 front and back half lining with pocketing outside

Accessory position



364E brand label in the right card pocket 3.0cm above



364B brand label in the center of left front pocket



3642 brand label in the center of left front waistband-



3643 brand label in the center of right front waistband



364Y Pocket lining in center of back waistband