

Romantic theme

1. Hollywood-top

---

2. Gurkha pants

---

3. Italian waist head

---

Prerequisite products

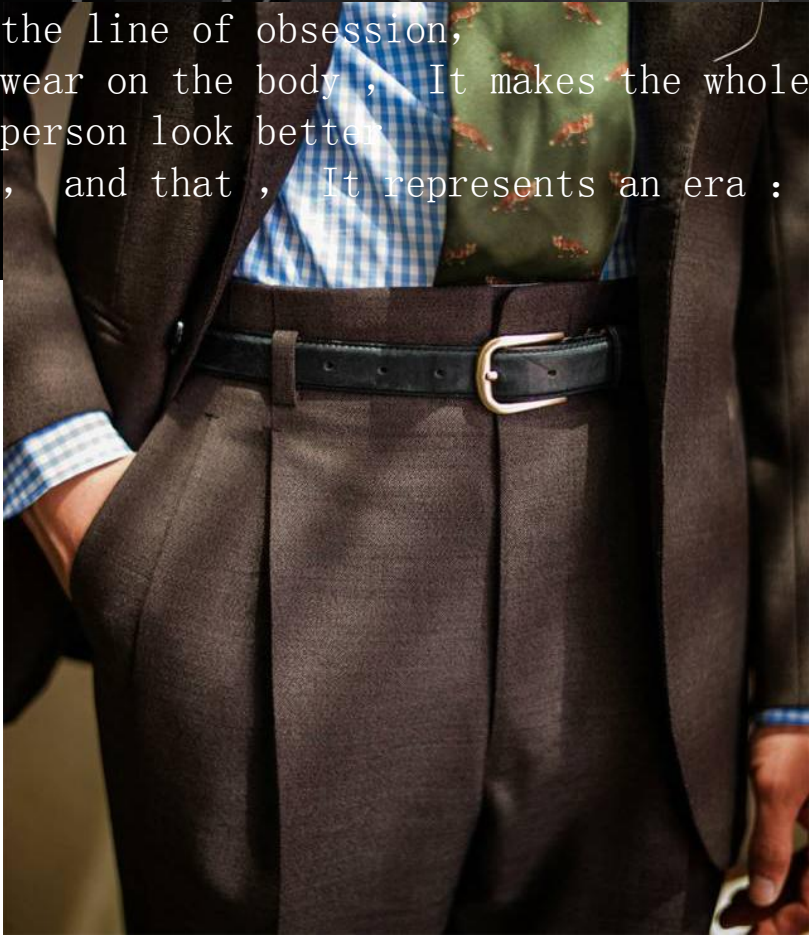


ABOUT 关于

# SPREZZATURA

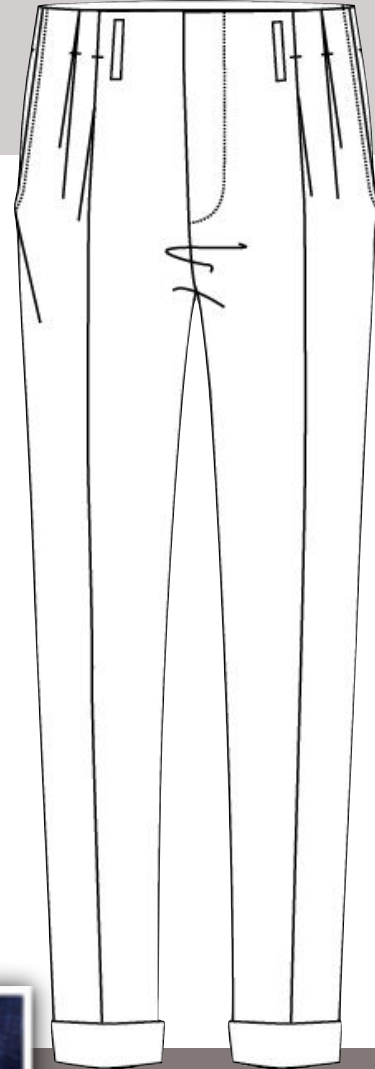
## Hollywood-top-

Like Hollywood top, Tall waist loose,  
Between stillness and motion,  
Comfortable enough to spare. Creases  
straight, Meet when outfit lovers on  
the line of obsession,  
wear on the body, It makes the whole  
person look better  
, and that, It represents an era :

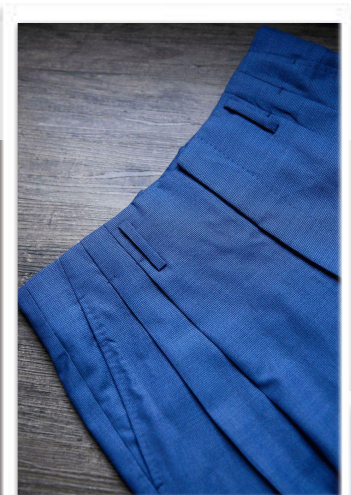


- 4cm Trouser hem with wide leg design
- Let your pants fly up in the air;
- In Hollywood-top, The belt should not exceed the width
- 3cm, Recommended standard
- 2.5cm, The whole proportion and taste are in place.

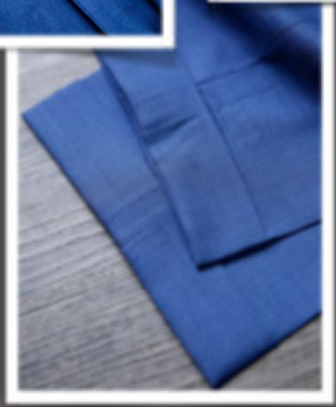
# Hollywood-top



- 3011 waistband type:continued waistband
- 3023 Pleats style:Double pleats forward sideseam
- 3104 Front pocket:2.5 slant pocket
- 3220 Hip pocket style:Besom back pocket
- 319E front pleat bar tack style:front pleat edge with 0.6cm horizontal bar tack
- 333B Belt loop style:no top stitch on belt loop
- 3341 beltloop knot:Upper beltloop no bartack
- 3425 front style:button fly (used for Front & Back continuous)
- 3603 Pant bottom style:3.8cm cuff
- 39Y2 Pant: Pant derivatives:



DBS220A



DBT026A



DBT605A



DBT592A



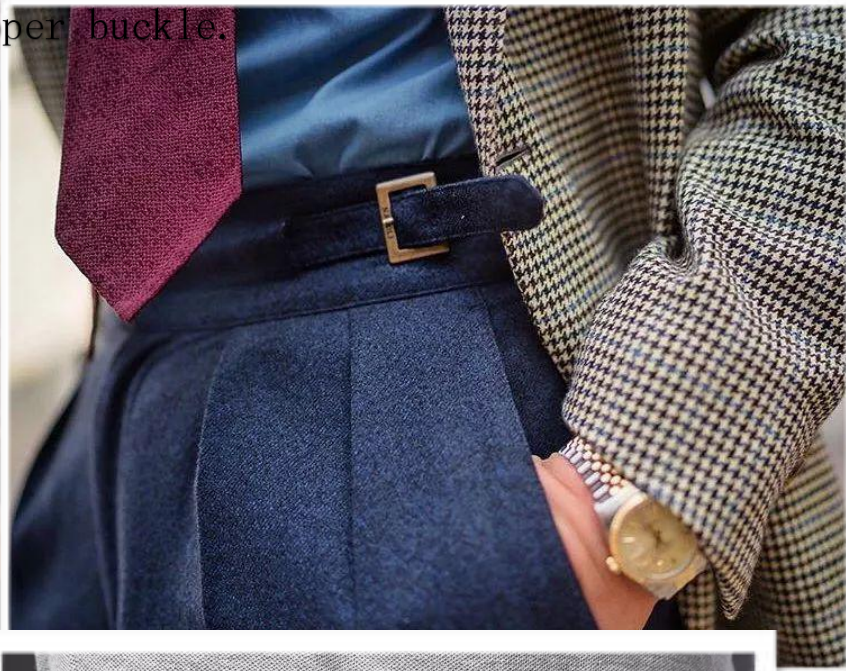
# STYLE CON

复刻  
进行时

Gurkha pants-

## EMASTER!

A perfect pant shape to lengthen your legs; Is a kind of waist front concise, no fixed belt for the "trouser nose" trouser. There is a strip adjusting loop on each side, , which extends to the waist and is firmly fixed by a copper buckle.



- Without a belt, the Gurkha pants- are lighter to wear and completely free from the girdle
- The double loop must stretch the inner loop so that no fold is suspected to be proud flesh
- Fresco fabrics are more wrinkle-resistant than regular worsted wool and cotton, eliminating a lot of ironing.

# Gurkha pants

39Y2 Pant derivatives

343R waist surface and waist lining are glued)

left and right sharp sword head plus pliers -

qxkqz01, left front waist circumference 1/2 side

seam 2CM, waist face lock vertical eye, eye size

3.2cm, sword head 2.5cm away from waist face eye

lock the first phoenix eye, each spacing 2.5cm, a

total of 3 phoenix eyes, pliers center 5.5cm away

from waist face eye, pliers loop length 6CM wide

3CM, no hook

3401 fly style:straight fly

3329 Belt loop style:No belt loop

3023 Pleats style:Double pleats forward sideseam

3104 Front pocket:2.5 slant pocket

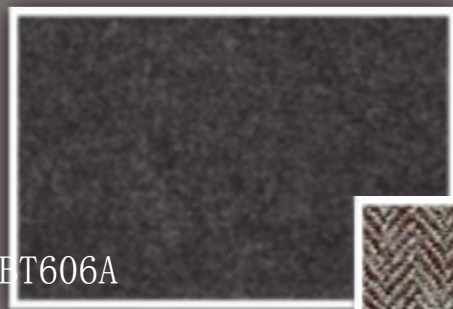
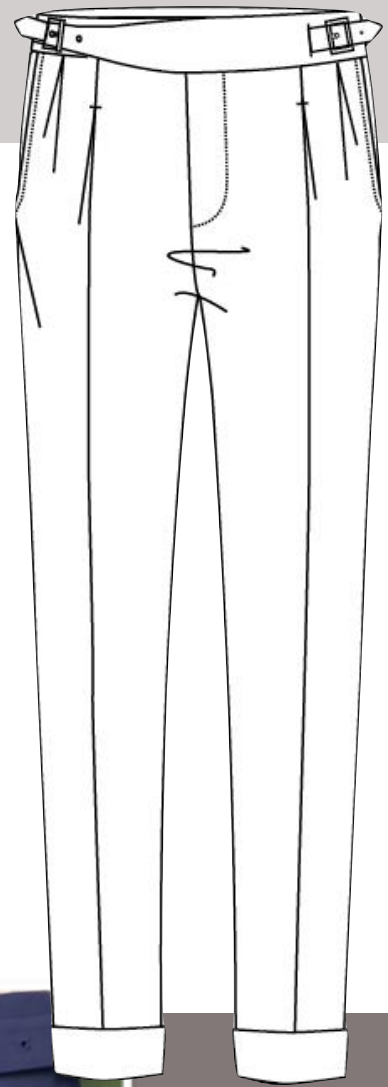
3201 Hip pocket style:double besom with button

back pockets

3604Pant bottom style:4.4cm cuff

319E front pleat bar tack style:front pleat edge

with 0.6cm horizontal bar tack



DFT606A



DBU012A



DBT559A



# italia

## MEN WEAR



### Italian waist head



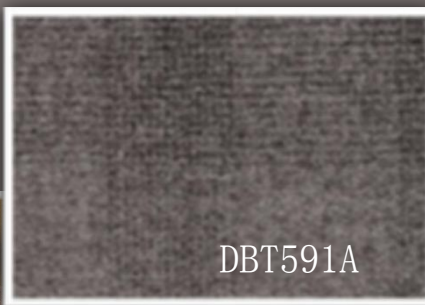
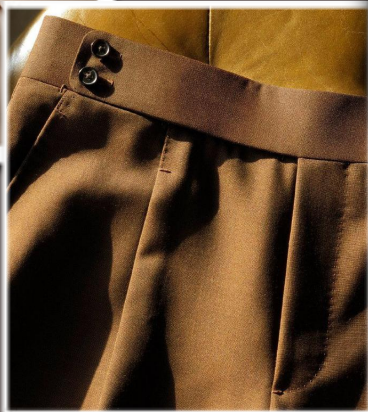
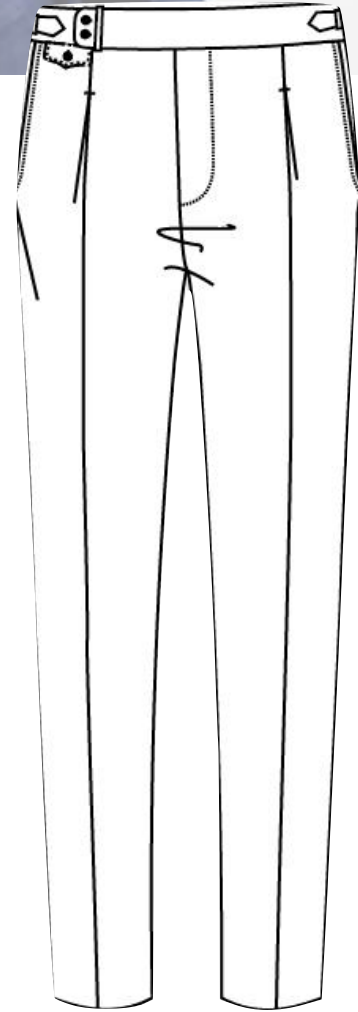
Italian waist head is an alternative to a belt; The loin loop extends to the loin side; And on both sides of the waistband with adjustable loops or elastic buckle, adjust the pants elastic; Seen from the front, the trousers of the Italian waist head are clean and tidy, with no extra buttons or nose on the front.



- Take off your coat and tie your jacket around your waist
- When stride pace walks, the wind blows dress horn, show trifling amorous feelings
- Italian waist head's high aesthetic, belt can not learn

# Italian waist head

- 3021 Pleats style:Single pleat forward side seam
- 30Z4 length of front pleat:3.2cm length of front pleat
- 31A5 stitching on front pocket:0.6 pick stitching for front pocket
- 330A placket front:big stitching for front
- 3341 beltloop knot:Upper beltloop no bartack
- 3406 fly style:Pointed fly
- 3430 Waistband style:Standard inner waistband
- 3500 Pant lining style:No lining
- 3015 pant waistband width:Waistband with 4.5cm
- 319E front pleat bar tack style:front pleat edge with 0.6cm horizontal bar tack
- 3220 Hip pocket style:Besom back pocket
- 333B Belt loop style:no top stitch on belt loop
- 3352 Add adjusting solder between the waist—QZMAB02-2
- 341Y Extension length (cm) :extension length 13cm
- 34AB Round sword head, double buttonhole, double hook
- 3618 Beltloop and heel guard:only one beltloop in right front waist, no other beltloops
- 334G Belt loop position:Frist belt loop move to front pleat 1.5cm fixed
- 3186 Watch pocket style:Right watch pocket with diamond flap and button



DBT591A



DBS125A



DBP698A

